

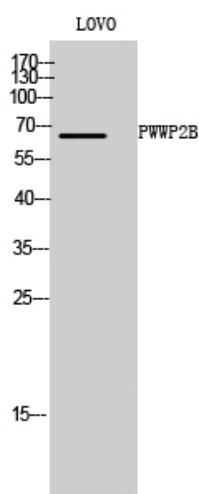


PWWP2B Polyclonal Antibody

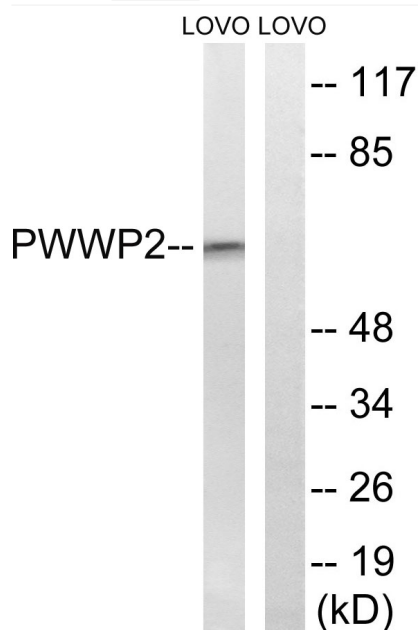
Catalog No	YP-Ab-04106
Isotype	IgG
Reactivity	Human;Rat;Mouse;
Applications	WB;IHC;IF;ELISA
Gene Name	PWWP2B
Protein Name	PWWP domain-containing protein 2B
Immunogen	The antiserum was produced against synthesized peptide derived from human PWWP2B. AA range:268-317
Specificity	PWWP2B Polyclonal Antibody detects endogenous levels of PWWP2B protein.
Formulation	Liquid in PBS containing 50% glycerol, 0.5% BSA and 0.02% sodium azide.
Source	Polyclonal, Rabbit,IgG
Purification	The antibody was affinity-purified from rabbit antiserum by affinity-chromatography using epitope-specific immunogen.
Dilution	WB: 1/500 - 1/2000. IHC: 1/100 - 1/300. ELISA: 1/20000.. IF 1:50-200
Concentration	1 mg/ml
Purity	≥90%
Storage Stability	-20°C/1 year
Synonyms	PWWP2B; PWWP2; PWWP domain-containing protein 2B
Observed Band	64kD
Cell Pathway	nucleoplasm,
Tissue Specificity	Placenta,Uterus,
Function	PTM:Phosphorylated upon DNA damage, probably by ATM or ATR.,sequence caution:Translation N-terminally shortened.,similarity:Contains 1 PWWP domain.,
Background	PTM:Phosphorylated upon DNA damage, probably by ATM or ATR.,sequence caution:Translation N-terminally shortened.,similarity:Contains 1 PWWP domain.,
matters needing attention	Avoid repeated freezing and thawing!
Usage suggestions	This product can be used in immunological reaction related experiments. For more information, please consult technical personnel.



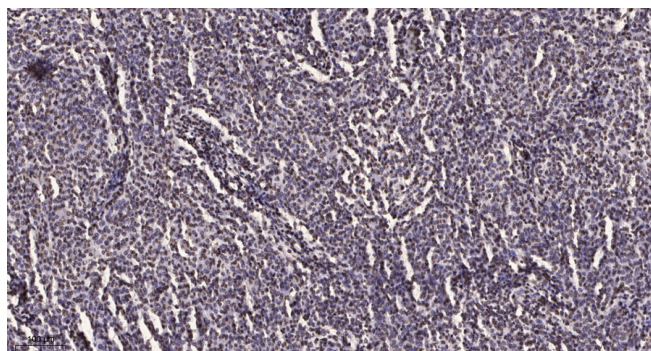
Products Images



Western Blot analysis of LOVO cells using PWWP2B Polyclonal Antibody



Western blot analysis of lysates from LOVO cells, using PWWP2B Antibody. The lane on the right is blocked with the synthesized peptide.



Immunohistochemical analysis of paraffin-embedded human brain tumor. 1, Antibody was diluted at 1:200(4° overnight). 2, Tris-EDTA, pH9.0 was used for antigen retrieval. 3, Secondary antibody was diluted at 1:200(room temperature, 45min).