



# Prefoldin 1 Polyclonal Antibody

<b>Catalog No</b>	YP-Ab-04100
<b>Isotype</b>	IgG
<b>Reactivity</b>	Human;Mouse
<b>Applications</b>	WB;IHC;IF;ELISA
<b>Gene Name</b>	PFDN1
<b>Protein Name</b>	Prefoldin subunit 1
<b>Immunogen</b>	The antiserum was produced against synthesized peptide derived from human PFDN1. AA range:1-50
<b>Specificity</b>	Prefoldin 1 Polyclonal Antibody detects endogenous levels of Prefoldin 1 protein.
<b>Formulation</b>	Liquid in PBS containing 50% glycerol, 0.5% BSA and 0.02% sodium azide.
<b>Source</b>	Polyclonal, Rabbit,IgG
<b>Purification</b>	The antibody was affinity-purified from rabbit antiserum by affinity-chromatography using epitope-specific immunogen.
<b>Dilution</b>	WB: 1/500 - 1/2000. IHC: 1/100 - 1/300. ELISA: 1/20000.. IF 1:50-200
<b>Concentration</b>	1 mg/ml
<b>Purity</b>	≥90%
<b>Storage Stability</b>	-20°C/1 year
<b>Synonyms</b>	PFDN1; PFD1; Prefoldin subunit 1
<b>Observed Band</b>	14kD
<b>Cell Pathway</b>	prefoldin complex,
<b>Tissue Specificity</b>	Colon,Thymus,
<b>Function</b>	function: Binds specifically to cytosolic chaperonin (c-CPN) and transfers target proteins to it. Binds to nascent polypeptide chain and promotes folding in an environment in which there are many competing pathways for nonnative proteins.,similarity: Belongs to the prefoldin subunit beta family.,subunit: Heterohexamer of two PFD-alpha type and four PFD-beta type subunits.,
<b>Background</b>	This gene encodes a member of the prefoldin beta subunit family. The encoded protein is one of six subunits of prefoldin, a molecular chaperone complex that binds and stabilizes newly synthesized polypeptides, thereby allowing them to fold correctly. The complex, consisting of two alpha and four beta subunits, forms a double beta barrel assembly with six protruding coiled-coils. [provided by RefSeq, Jul 2008],



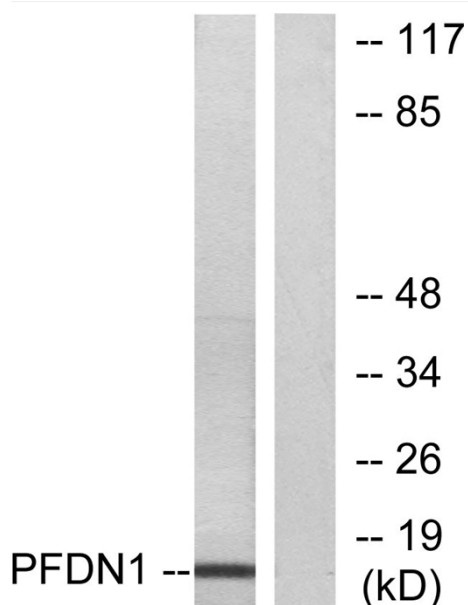
### matters needing attention

Avoid repeated freezing and thawing!

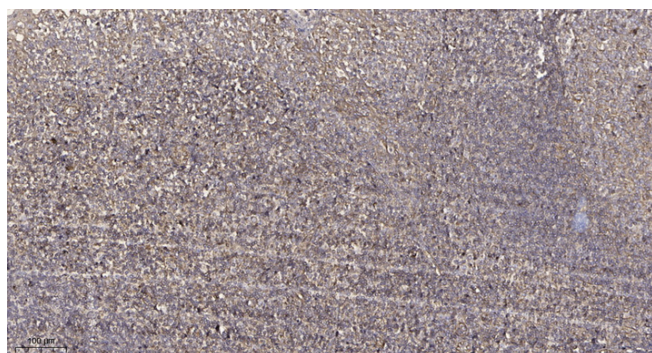
### Usage suggestions

This product can be used in immunological reaction related experiments. For more information, please consult technical personnel.

## Products Images



Western blot analysis of lysates from RAW264.7 cells, using PFDN1 Antibody. The lane on the right is blocked with the synthesized peptide.



Immunohistochemical analysis of paraffin-embedded human tonsil. 1, Antibody was diluted at 1:200(4° overnight). 2, Tris-EDTA,pH9.0 was used for antigen retrieval. 3,Secondary antibody was diluted at 1:200(room temperature, 30min).