



PPP1R14D Polyclonal Antibody

Catalog No	YP-Ab-04097
Isotype	IgG
Reactivity	Human;Rat;Mouse;
Applications	WB;IHC;IF;ELISA
Gene Name	PPP1R14D
Protein Name	Protein phosphatase 1 regulatory subunit 14D
Immunogen	The antiserum was produced against synthesized peptide derived from human PPP1R14D. AA range:66-115
Specificity	PPP1R14D Polyclonal Antibody detects endogenous levels of PPP1R14D protein.
Formulation	Liquid in PBS containing 50% glycerol, 0.5% BSA and 0.02% sodium azide.
Source	Polyclonal, Rabbit,IgG
Purification	The antibody was affinity-purified from rabbit antiserum by affinity-chromatography using epitope-specific immunogen.
Dilution	WB: 1/500 - 1/2000. IHC: 1/100 - 1/300. ELISA: 1/5000.. IF 1:50-200
Concentration	1 mg/ml
Purity	≥90%
Storage Stability	-20°C/1 year
Synonyms	PPP1R14D; GBPI; Protein phosphatase 1 regulatory subunit 14D; Gastrointestinal and brain-specific PP1-inhibitory protein 1; GBPI-1
Observed Band	24kD
Cell Pathway	Cytoplasm .
Tissue Specificity	Detected in colon, intestine, kidney and brain cortex.
Function	function:Inhibitor of PPP1CA. Has inhibitory activity only when phosphorylated, creating a molecular switch for regulating the phosphorylation status of PPP1CA substrates and smooth muscle contraction.,PTM:Phosphorylated on several residues.,similarity:Belongs to the PP1 inhibitor family.,tissue specificity:Detected in colon, intestine, kidney and brain cortex.,
Background	Protein phosphatase-1 (PP1; see MIM 176875) is a major cellular phosphatase that reverses serine/threonine protein phosphorylation. PPP1R14D is a PP1 inhibitor that itself is regulated by phosphorylation (Liu et al., 2004 [PubMed 12974676]).[supplied by OMIM, Feb 2010],
matters needing attention	Avoid repeated freezing and thawing!



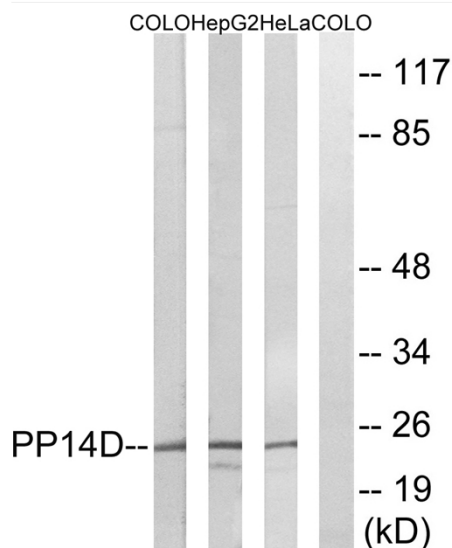
Usage suggestions

This product can be used in immunological reaction related experiments. For more information, please consult technical personnel.

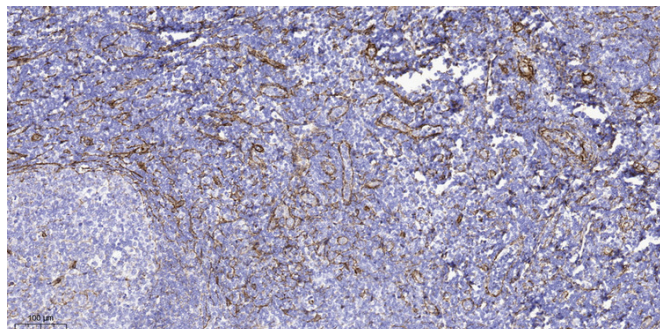
Products Images



Western Blot analysis of various cells using PPP1R14D Polyclonal Antibody



Western blot analysis of lysates from HeLa, HepG2, and COLO cells, using PPP1R14D Antibody. The lane on the right is blocked with the synthesized peptide.



Immunohistochemical analysis of paraffin-embedded human tonsil. 1, Tris-EDTA, pH 9.0 was used for antigen retrieval. 2 Antibody was diluted at 1:200 (4° overnight). 3, Secondary antibody was diluted at 1:200 (room temperature, 45 min).