

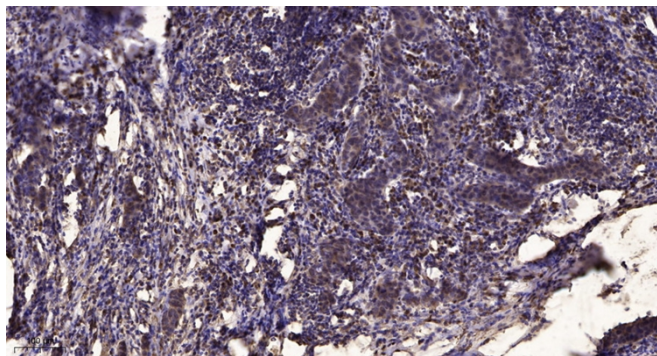


# PITPα Polyclonal Antibody

<b>Catalog No</b>	YP-Ab-04090
<b>Isotype</b>	IgG
<b>Reactivity</b>	Human;Mouse;Rat
<b>Applications</b>	IHC;IF;ELISA
<b>Gene Name</b>	PITPNA
<b>Protein Name</b>	Phosphatidylinositol transfer protein alpha isoform
<b>Immunogen</b>	Synthesized peptide derived from PITPα . at AA range: 160-240
<b>Specificity</b>	PITPα Polyclonal Antibody detects endogenous levels of PITPα protein.
<b>Formulation</b>	Liquid in PBS containing 50% glycerol, 0.5% BSA and 0.02% sodium azide.
<b>Source</b>	Polyclonal, Rabbit,IgG
<b>Purification</b>	The antibody was affinity-purified from rabbit antiserum by affinity-chromatography using epitope-specific immunogen.
<b>Dilution</b>	IHC: 1/100 - 1/300. ELISA: 1/10000.. IF 1:50-200
<b>Concentration</b>	1 mg/ml
<b>Purity</b>	≥90%
<b>Storage Stability</b>	-20°C/1 year
<b>Synonyms</b>	PITPNA; PITPN; Phosphatidylinositol transfer protein alpha isoform; PI-TP-alpha; PtdIns transfer protein alpha; PtdInsTP alpha
<b>Observed Band</b>	
<b>Cell Pathway</b>	Cytoplasm . Nucleus .
<b>Tissue Specificity</b>	Brain,Cajal-Retzius cell,Lung,Ovary,Testis,
<b>Function</b>	function:Catalyzes the transfer of PtdIns and phosphatidylcholine between membranes.,similarity:Belongs to the PtdIns transfer protein family. Class I subfamily.,tissue specificity:Expressed in a wide range of tissues.,
<b>Background</b>	This gene encodes a member of a family of lipid-binding proteins that transfer molecules of phosphatidylinositol or phosphatidylcholine between membrane surfaces. The protein is implicated in phospholipase C signaling and in the production of phosphatidylinositol 3,4,5-trisphosphate (PIP3) by phosphoinositide-3-kinase.[provided by RefSeq, Sep 2009],
<b>matters needing attention</b>	Avoid repeated freezing and thawing!
<b>Usage suggestions</b>	This product can be used in immunological reaction related experiments. For more information, please consult technical personnel.



## Products Images



Immunohistochemical analysis of paraffin-embedded human Breast cancer. 1, Antibody was diluted at 1:200(4° overnight). 2, Tris-EDTA,pH9.0 was used for antigen retrieval. 3,Secondary antibody was diluted at 1:200(room temperature, 45min).