



Phocein Polyclonal Antibody

| | |
|---------------------------|--|
| Catalog No | YP-Ab-04081 |
| Isotype | IgG |
| Reactivity | Human;Mouse;Rat |
| Applications | WB;IHC;IF;ELISA |
| Gene Name | MOB4 |
| Protein Name | MOB-like protein phocein |
| Immunogen | The antiserum was produced against synthesized peptide derived from human MOBL3. AA range:1-50 |
| Specificity | Phocein Polyclonal Antibody detects endogenous levels of Phocein protein. |
| Formulation | Liquid in PBS containing 50% glycerol, 0.5% BSA and 0.02% sodium azide. |
| Source | Polyclonal, Rabbit,IgG |
| Purification | The antibody was affinity-purified from rabbit antiserum by affinity-chromatography using epitope-specific immunogen. |
| Dilution | Western Blot: 1/500 - 1/2000. Immunohistochemistry: 1/100 - 1/300. Immunofluorescence: 1/200 - 1/1000. ELISA: 1/20000. Not yet tested in other applications. |
| Concentration | 1 mg/ml |
| Purity | ≥90% |
| Storage Stability | -20°C/1 year |
| Synonyms | MOB4; MOB3; MOBKL3; PHOCN; PREI3; CGI-95; MOB-like protein phocein; 2C4D; Class II mMOB1; Mob1 homolog 3; Mob3; Mps one binder kinase activator-like 3; Preimplantation protein 3 |
| Observed Band | 26kD |
| Cell Pathway | Cytoplasm, perinuclear region . Membrane ; Peripheral membrane protein . Golgi apparatus, Golgi stack membrane ; Peripheral membrane protein . In a perinuclear punctate pattern. Associated with membranes and the Golgi stacks. |
| Tissue Specificity | Adrenal gland,Brain,Trachea,Urinary bladder, |
| Function | PTM:Phosphorylated on serine residues.,similarity:Belongs to the MOB1/phocein family.,subcellular location:In a perinuclear punctate pattern. Associated with membranes and the Golgi stacks.,subunit:Binds STRN4 (By similarity). Binds STRN and STRN3. Part of a ternary complex containing MOBKL3, STRN and/or STRN3 and PPA2., |
| Background | This gene was identified based on its similarity with the mouse counterpart. Studies of the mouse counterpart suggest that the expression of this gene may be regulated during oocyte maturation and preimplantation following zygotic gene activation. Alternatively spliced transcript variants encoding distinct isoforms have been observed. Naturally occurring read-through transcription occurs between |



this locus and the neighboring locus HSPE1.[provided by RefSeq, Feb 2011],

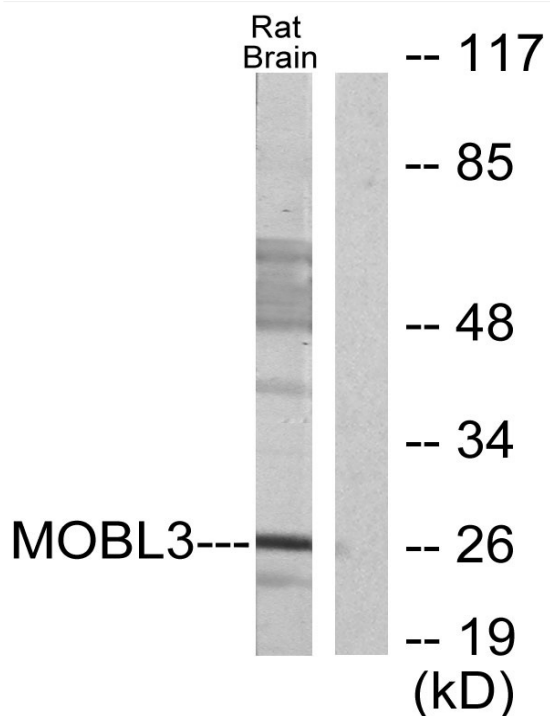
matters needing attention

Avoid repeated freezing and thawing!

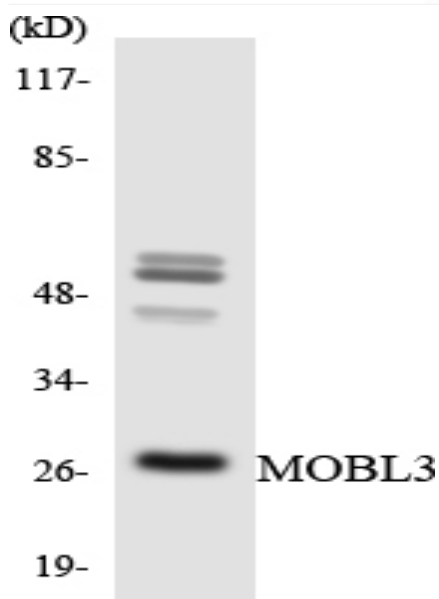
Usage suggestions

This product can be used in immunological reaction related experiments. For more information, please consult technical personnel.

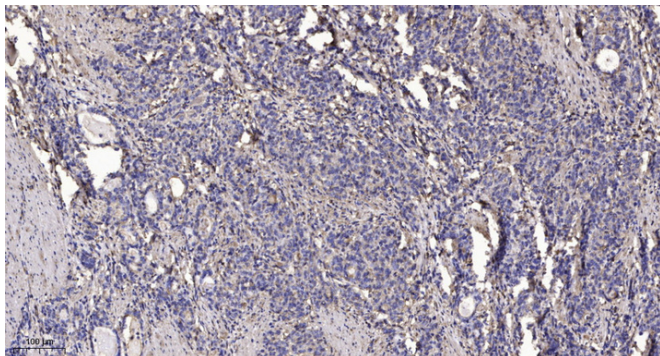
Products Images



Western blot analysis of lysates from rat brain cells, using MOBL3 Antibody. The lane on the right is blocked with the synthesized peptide.



Western blot analysis of the lysates from HT-29 cells using MOBL3 antibody.



Immunohistochemical analysis of paraffin-embedded human Gastric adenocarcinoma. 1, Antibody was diluted at 1:200(4° overnight). 2, Tris-EDTA,pH9.0 was used for antigen retrieval. 3,Secondary antibody was diluted at 1:200(room temperature, 45min).