

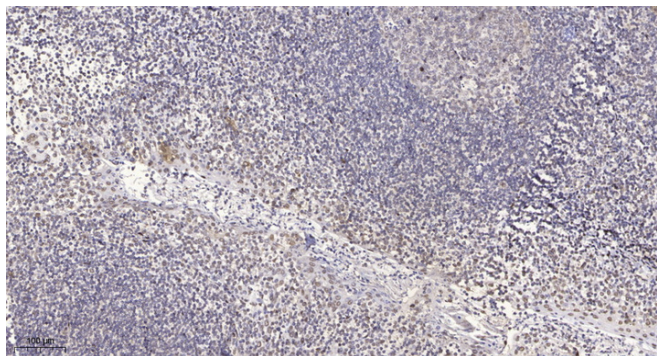


PHI-1 Polyclonal Antibody

Catalog No	YP-Ab-04079
Isotype	IgG
Reactivity	Human;Mouse;Rat
Applications	IHC;IF;ELISA
Gene Name	PPP1R14B
Protein Name	Protein phosphatase 1 regulatory subunit 14B
Immunogen	Synthesized peptide derived from PHI-1 . at AA range: 50-130
Specificity	PHI-1 Polyclonal Antibody detects endogenous levels of PHI-1 protein.
Formulation	Liquid in PBS containing 50% glycerol, 0.5% BSA and 0.02% sodium azide.
Source	Polyclonal, Rabbit,IgG
Purification	The antibody was affinity-purified from rabbit antiserum by affinity-chromatography using epitope-specific immunogen.
Dilution	IHC: 1/100 - 1/300. ELISA: 1/20000.. IF 1:50-200
Concentration	1 mg/ml
Purity	≥90%
Storage Stability	-20°C/1 year
Synonyms	PPP1R14B; PLCB3N; PNG; Protein phosphatase 1 regulatory subunit 14B; Phospholipase C-beta-3 neighbouring gene protein
Observed Band	
Cell Pathway	Cytoplasm .
Tissue Specificity	Ubiquitous. Expressed at low levels.
Function	function:Inhibitor of PPP1CA. Has over 50-fold higher inhibitory activity when phosphorylated.,PTM:Phosphorylated primarily on Thr-57 by PKC (in vitro). An unknown Ser is also phosphorylated by PKC (in vitro).,similarity:Belongs to the PP1 inhibitor family.,tissue specificity:Ubiquitous. Expressed at low levels.,
Background	function:Inhibitor of PPP1CA. Has over 50-fold higher inhibitory activity when phosphorylated.,PTM:Phosphorylated primarily on Thr-57 by PKC (in vitro). An unknown Ser is also phosphorylated by PKC (in vitro).,similarity:Belongs to the PP1 inhibitor family.,tissue specificity:Ubiquitous. Expressed at low levels.,
matters needing attention	Avoid repeated freezing and thawing!
Usage suggestions	This product can be used in immunological reaction related experiments. For more information, please consult technical personnel.



Products Images



Immunohistochemical analysis of paraffin-embedded human tonsil. 1, Antibody was diluted at 1:200(4° overnight). 2, Tris-EDTA,pH9.0 was used for antigen retrieval. 3,Secondary antibody was diluted at 1:200(room temperature, 30min).