



PEDF Polyclonal Antibody

Catalog No	YP-Ab-04064
Isotype	IgG
Reactivity	Human;Mouse;Rat
Applications	IHC;IF;WB;ELISA
Gene Name	SERPINF1
Protein Name	Pigment epithelium-derived factor
Immunogen	The antiserum was produced against synthesized peptide derived from human PEDF. AA range:258-307
Specificity	PEDF Polyclonal Antibody detects endogenous levels of PEDF protein.
Formulation	Liquid in PBS containing 50% glycerol, 0.5% BSA and 0.02% sodium azide.
Source	Polyclonal, Rabbit,IgG
Purification	The antibody was affinity-purified from rabbit antiserum by affinity-chromatography using epitope-specific immunogen.
Dilution	Western Blot: 1/500 - 1/2000. IHC-p: 1:100-300 ELISA: 1/20000. IF 1:100-300 Not yet tested in other applications.
Concentration	1 mg/ml
Purity	≥90%
Storage Stability	-20°C/1 year
Synonyms	SERPINF1; PEDF; PIG35; Pigment epithelium-derived factor; PEDF; Cell proliferation-inducing gene 35 protein; EPC-1; Serpin F1
Observed Band	46kD
Cell Pathway	Secreted . Melanosome . Enriched in stage I melanosomes.
Tissue Specificity	Retinal pigment epithelial cells and blood plasma.
Function	developmental stage:Expressed in quiescent cells.,domain:The N-terminal (AA 44-121) exhibits neurite outgrowth-inducing activity. The C-terminal exposed loop (AA 382-418) is essential for serpin activity.,function:Neurotrophic protein; induces extensive neuronal differentiation in retinoblastoma cells. Potent inhibitor of angiogenesis. As it does not undergo the S (stressed) to R (relaxed) conformational transition characteristic of active serpins, it exhibits no serine protease inhibitory activity.,PTM:The N-terminus is blocked. Extracellular phosphorylation enhances antiangiogenic activity.,similarity:Belongs to the serpin family.,subcellular location:Enriched in stage I melanosomes.,tissue specificity:Retinal pigment epithelial cells and blood plasma.,
Background	This gene encodes a member of the serpin family that does not display the serine protease inhibitory activity shown by many of the other serpin proteins. The encoded protein is secreted and strongly inhibits angiogenesis. In addition, this



protein is a neurotrophic factor involved in neuronal differentiation in retinoblastoma cells. Mutations in this gene were found in individuals with osteogenesis imperfecta, type VI. [provided by RefSeq, Aug 2016],

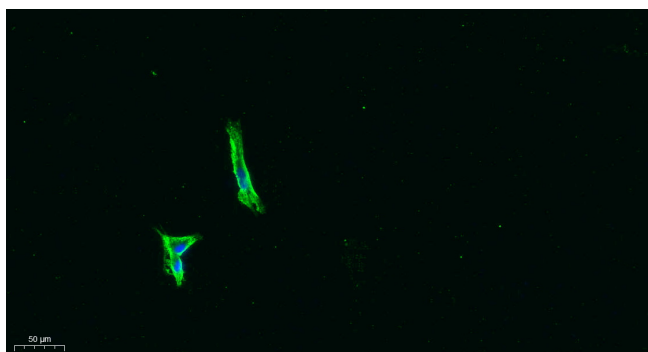
matters needing attention

Avoid repeated freezing and thawing!

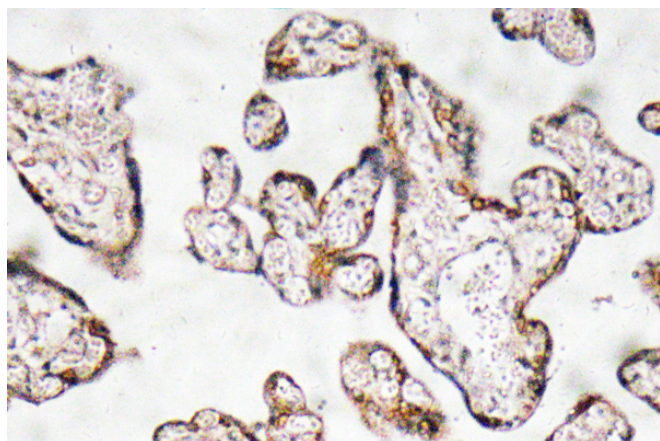
Usage suggestions

This product can be used in immunological reaction related experiments. For more information, please consult technical personnel.

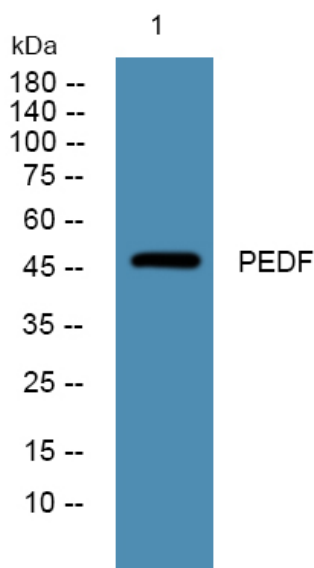
Products Images



Immunofluorescence analysis of A549. 1, primary Antibody was diluted at 1:200 (4°C overnight). 2, Goat Anti Rabbit IgG (H&L) - Alexa Fluor 488 Secondary antibody was diluted at 1:1000 (room temperature, 50min). 3, Picture B: DAPI (blue) 10min.



Immunohistochemistry analysis of PEDF antibody in paraffin-embedded human prostate carcinoma tissue.



Western blot analysis of lysates from A431 cells, primary antibody was diluted at 1:1000, 4°C over night