



# PBR Polyclonal Antibody

<b>Catalog No</b>	YP-Ab-04062
<b>Isotype</b>	IgG
<b>Reactivity</b>	Human;Rat;Mouse;
<b>Applications</b>	WB;IHC
<b>Gene Name</b>	TSPO
<b>Protein Name</b>	Translocator protein
<b>Immunogen</b>	Synthesized peptide derived from PBR . at AA range: 90-170
<b>Specificity</b>	PBR Polyclonal Antibody detects endogenous levels of PBR protein.
<b>Formulation</b>	Liquid in PBS containing 50% glycerol, 0.5% BSA and 0.02% sodium azide.
<b>Source</b>	Polyclonal, Rabbit,IgG
<b>Purification</b>	The antibody was affinity-purified from rabbit antiserum by affinity-chromatography using epitope-specific immunogen.
<b>Dilution</b>	WB 1:500-2000;IHC-p 1:50-300
<b>Concentration</b>	1 mg/ml
<b>Purity</b>	≥90%
<b>Storage Stability</b>	-20°C/1 year
<b>Synonyms</b>	TSPO; BZRP; MBR; Translocator protein; Mitochondrial benzodiazepine receptor; PKBS; Peripheral-type benzodiazepine receptor; PBR
<b>Observed Band</b>	20kD
<b>Cell Pathway</b>	Mitochondrion membrane ; Multi-pass membrane protein .
<b>Tissue Specificity</b>	Found in many tissue types. Expressed at the highest levels under normal conditions in tissues that synthesize steroids.
<b>Function</b>	protein targeting, protein targeting to mitochondrion, porphyrin metabolic process, porphyrin biosynthetic process,heme biosynthetic process, ion transport, anion transport, mitochondrial transport, intracellular protein transport,apoptosis, mitochondrion organization, protein localization, steroid metabolic process, cell death, cell proliferation,programmed cell death, protein transport, death, protein import, heterocycle biosynthetic process, regulation of lipid transport, regulation of sterol transport, regulation of cholesterol transport, tetrapyrrole metabolic process,tetrapyrrole biosynthetic process, protein localization in organelle, cellular protein localization, heme metabolic process, pigment metabolic process, nitrogen compound biosynthetic process, establishment of protein localization,pigment biosynthetic process, intracellular transport, cofactor metabolic process, cofacto
<b>Background</b>	Present mainly in the mitochondrial compartment of peripheral tissues, the protein encoded by this gene interacts with some benzodiazepines and has



different affinities than its endogenous counterpart. The protein is a key factor in the flow of cholesterol into mitochondria to permit the initiation of steroid hormone synthesis. Alternatively spliced transcript variants have been reported; one of the variants lacks an internal exon and is considered non-coding, and the other variants encode the same protein. [provided by RefSeq, Feb 2012],

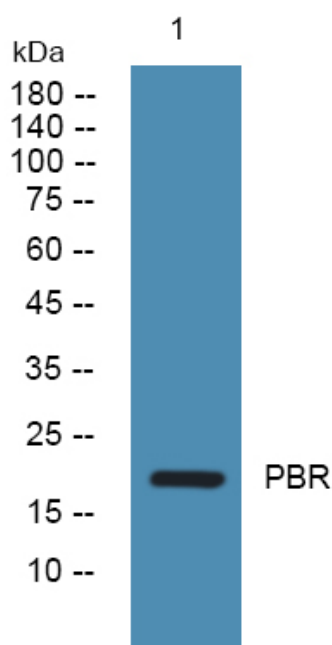
**matters needing attention**

Avoid repeated freezing and thawing!

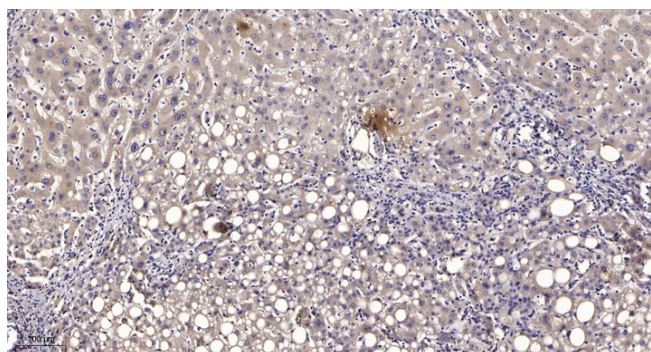
**Usage suggestions**

This product can be used in immunological reaction related experiments. For more information, please consult technical personnel.

**Products Images**



Western blot analysis of lysates from DU145 cells, primary antibody was diluted at 1:1000, 4° over night



Immunohistochemical analysis of paraffin-embedded human liver cancer. 1, Antibody was diluted at 1:200 (4° overnight). 2, Tris-EDTA, pH 9.0 was used for antigen retrieval. 3, Secondary antibody was diluted at 1:200 (room temperature, 45 min).