



# PABP3 Polyclonal Antibody

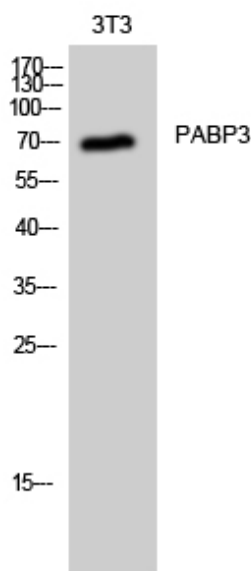
<b>Catalog No</b>	YP-Ab-04055
<b>Isotype</b>	IgG
<b>Reactivity</b>	Human;Rat;Mouse;
<b>Applications</b>	WB;IHC;IF;ELISA
<b>Gene Name</b>	PABPC3
<b>Protein Name</b>	Polyadenylate-binding protein 3
<b>Immunogen</b>	The antiserum was produced against synthesized peptide derived from human PABPC3. AA range:352-401
<b>Specificity</b>	PABP3 Polyclonal Antibody detects endogenous levels of PABP3 protein.
<b>Formulation</b>	Liquid in PBS containing 50% glycerol, 0.5% BSA and 0.02% sodium azide.
<b>Source</b>	Polyclonal, Rabbit,IgG
<b>Purification</b>	The antibody was affinity-purified from rabbit antiserum by affinity-chromatography using epitope-specific immunogen.
<b>Dilution</b>	WB: 1/500 - 1/2000.IHC-p:1:50-300 ELISA: 1/20000.. IF 1:50-200
<b>Concentration</b>	1 mg/ml
<b>Purity</b>	≥90%
<b>Storage Stability</b>	-20°C/1 year
<b>Synonyms</b>	PABPC3; PABP3; PABPL3; Polyadenylate-binding protein 3; PABP-3; Poly(A)-binding protein 3; Testis-specific poly(A)-binding protein
<b>Observed Band</b>	70kD
<b>Cell Pathway</b>	Cytoplasm .
<b>Tissue Specificity</b>	Testis specific.
<b>Function</b>	function: Binds the poly(A) tail of mRNA. May be involved in cytoplasmic regulatory processes of mRNA metabolism. Binds poly(A) with a slightly lower affinity as compared to PABPC1.,similarity: Belongs to the polyadenylate-binding protein type-1 family.,similarity: Contains 1 PABC domain.,similarity: Contains 4 RRM (RNA recognition motif) domains.,tissue specificity: Testis specific.,
<b>Background</b>	Messenger RNA stability and translation initiation are extensively under the control of poly(A)-binding proteins (PABP). See PABPC1 (MIM 604679) for background information.[supplied by OMIM, Jul 2002],
<b>matters needing attention</b>	Avoid repeated freezing and thawing!



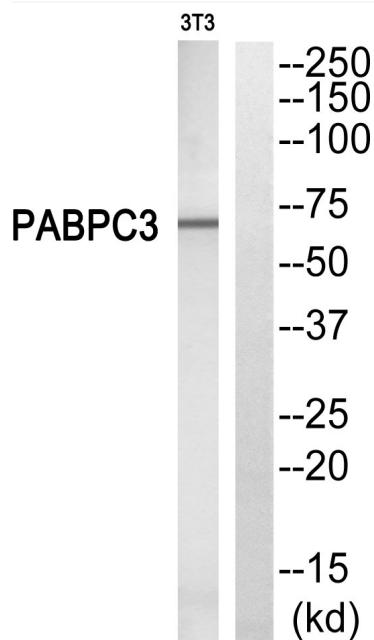
## Usage suggestions

This product can be used in immunological reaction related experiments. For more information, please consult technical personnel.

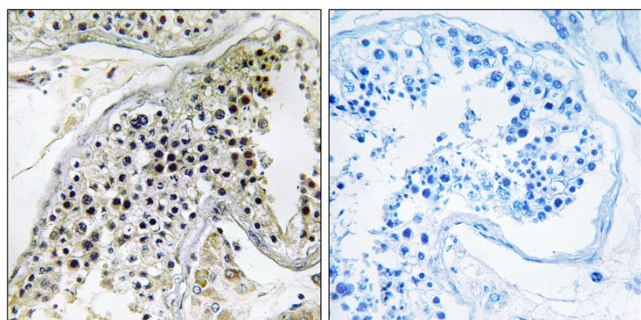
## Products Images



Western Blot analysis of 3T3 cells using PABP3 Polyclonal Antibody



Western blot analysis of PABPC3 Antibody. The lane on the right is blocked with the PABPC3 peptide.



Immunohistochemistry analysis of paraffin-embedded human testis, using PABPC3 Antibody. The lane on the right is blocked with the PABPC3 peptide.