



# p140Cap Polyclonal Antibody

<b>Catalog No</b>	YP-Ab-04054
<b>Isotype</b>	IgG
<b>Reactivity</b>	Human;Mouse;Rat
<b>Applications</b>	WB;ELISA
<b>Gene Name</b>	SRCIN1
<b>Protein Name</b>	SRC kinase signaling inhibitor 1
<b>Immunogen</b>	The antiserum was produced against synthesized peptide derived from human SNIP. AA range:811-860
<b>Specificity</b>	p140Cap Polyclonal Antibody detects endogenous levels of p140Cap protein.
<b>Formulation</b>	Liquid in PBS containing 50% glycerol, 0.5% BSA and 0.02% sodium azide.
<b>Source</b>	Polyclonal, Rabbit,IgG
<b>Purification</b>	The antibody was affinity-purified from rabbit antiserum by affinity-chromatography using epitope-specific immunogen.
<b>Dilution</b>	Western Blot: 1/500 - 1/2000. ELISA: 1/20000. Not yet tested in other applications.
<b>Concentration</b>	1 mg/ml
<b>Purity</b>	≥90%
<b>Storage Stability</b>	-20°C/1 year
<b>Synonyms</b>	SRCIN1; KIAA1684; P140; SRC kinase signaling inhibitor 1; SNAP-25-interacting protein; SNIP; p130Cas-associated protein; p140Cap
<b>Observed Band</b>	112kD
<b>Cell Pathway</b>	Cytoplasm . Cytoplasm, cytoskeleton . Cell projection, axon . Cell projection, dendrite . Cell junction, synapse, presynapse . Cell junction, synapse, postsynapse . Cell junction, synapse, postsynaptic density . Localized to the perinuclear region, lamellopodia, cortical actin and actin stress fibers but not to focal adhesions. Strongly expressed in axons and dendrites of the CA1 and CA3 hippocampal regions and of the dentate gyrus. Detected in both presynapses and postsynapses and enriched in postsynaptic density fractions. .
<b>Tissue Specificity</b>	Expressed in some primary breast carcinomas where its presence is significantly associated with increased tumor size. Not detected in normal breast tissue.
<b>Function</b>	function:Delays the onset of cell spreading in the early stages of cell adhesion to fibronectin. Also involved in calcium-dependent exocytosis from PC12 cells.,PTM:Tyrosine-phosphorylated in response to EGF and to cell adhesion to integrin ligands.,similarity:Belongs to the p140Cap family.,subcellular location:Localized to the perinuclear region, lamellopodia, cortical actin and actin stress fibers but not to focal adhesions.,subunit:Interacts with the N-terminal coiled-coil region of SNAP25 (By similarity). Interacts with BCAR1/p130Cas through its C-terminal domain.,



## Background

function: Delays the onset of cell spreading in the early stages of cell adhesion to fibronectin. Also involved in calcium-dependent exocytosis from PC12 cells., PTM: Tyrosine-phosphorylated in response to EGF and to cell adhesion to integrin ligands., similarity: Belongs to the p140Cap family., subcellular location: Localized to the perinuclear region, lamellopodia, cortical actin and actin stress fibers but not to focal adhesions., subunit: Interacts with the N-terminal coiled-coil region of SNAP25 (By similarity). Interacts with BCAR1/p130Cas through its C-terminal domain.,

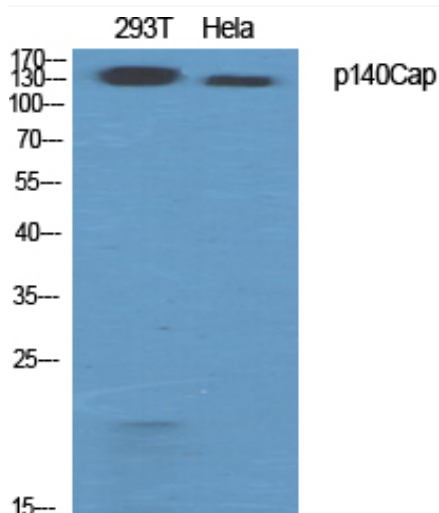
## matters needing attention

Avoid repeated freezing and thawing!

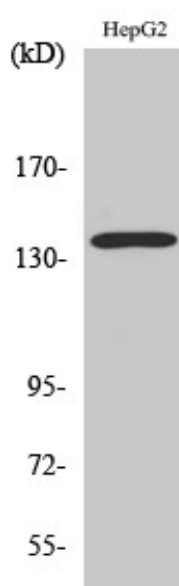
## Usage suggestions

This product can be used in immunological reaction related experiments. For more information, please consult technical personnel.

## Products Images



Western Blot analysis of various cells using p140Cap Polyclonal Antibody diluted at 1:500



Western Blot analysis of HeLa cells using p140Cap Polyclonal Antibody diluted at 1:500