

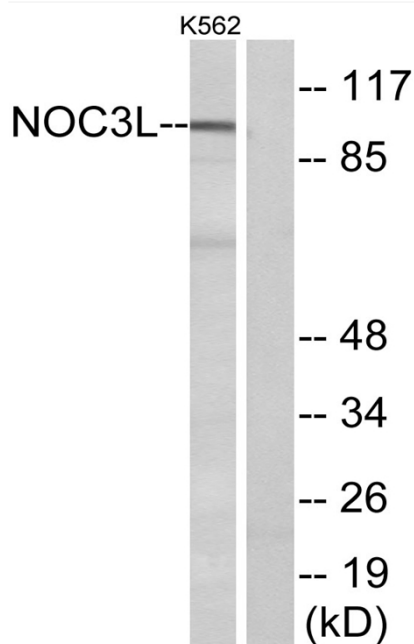


# NOC3L Polyclonal Antibody

<b>Catalog No</b>	YP-Ab-04042
<b>Isotype</b>	IgG
<b>Reactivity</b>	Human;Mouse
<b>Applications</b>	WB;ELISA
<b>Gene Name</b>	NOC3L
<b>Protein Name</b>	Nucleolar complex protein 3 homolog
<b>Immunogen</b>	The antiserum was produced against synthesized peptide derived from human NOC3L. AA range:415-464
<b>Specificity</b>	NOC3L Polyclonal Antibody detects endogenous levels of NOC3L protein.
<b>Formulation</b>	Liquid in PBS containing 50% glycerol, 0.5% BSA and 0.02% sodium azide.
<b>Source</b>	Polyclonal, Rabbit,IgG
<b>Purification</b>	The antibody was affinity-purified from rabbit antiserum by affinity-chromatography using epitope-specific immunogen.
<b>Dilution</b>	Western Blot: 1/500 - 1/2000. ELISA: 1/40000. Not yet tested in other applications.
<b>Concentration</b>	1 mg/ml
<b>Purity</b>	≥90%
<b>Storage Stability</b>	-20°C/1 year
<b>Synonyms</b>	NOC3L; AD24; C10orf117; FAD24; Nucleolar complex protein 3 homolog; NOC3 protein homolog; Factor for adipocyte differentiation 24; NOC3-like protein; Nucleolar complex-associated protein 3-like protein
<b>Observed Band</b>	93kD
<b>Cell Pathway</b>	Nucleus, nucleolus. Nucleus speckle.
<b>Tissue Specificity</b>	Expressed in colon, heart, kidney, liver, lung, placenta, skeletal muscle, small intestine, spleen and thymus.
<b>Function</b>	function:May be required for adipogenesis.,similarity:Belongs to the CBF/MAK21 family.,tissue specificity:Expressed in colon, heart, kidney, liver, lung, placenta, skeletal muscle, small intestine, spleen and thymus.,
<b>Background</b>	function:May be required for adipogenesis.,similarity:Belongs to the CBF/MAK21 family.,tissue specificity:Expressed in colon, heart, kidney, liver, lung, placenta, skeletal muscle, small intestine, spleen and thymus.,
<b>matters needing attention</b>	Avoid repeated freezing and thawing!

**Usage suggestions**

This product can be used in immunological reaction related experiments. For more information, please consult technical personnel.

**Products Images**

Western blot analysis of lysates from K562 cells, using NOC3L Antibody. The lane on the right is blocked with the synthesized peptide.