



NGEP Polyclonal Antibody

Catalog No	YP-Ab-04039
Isotype	IgG
Reactivity	Human;Rat;Mouse;
Applications	WB;IHC;IF;ELISA
Gene Name	ANO7
Protein Name	Anoctamin-7
Immunogen	The antiserum was produced against synthesized peptide derived from human TM16G. AA range:881-930
Specificity	NGEP Polyclonal Antibody detects endogenous levels of NGEP protein.
Formulation	Liquid in PBS containing 50% glycerol, 0.5% BSA and 0.02% sodium azide.
Source	Polyclonal, Rabbit,IgG
Purification	The antibody was affinity-purified from rabbit antiserum by affinity-chromatography using epitope-specific immunogen.
Dilution	Western Blot: 1/500 - 1/2000. Immunohistochemistry: 1/100 - 1/300. Immunofluorescence: 1/200 - 1/1000. ELISA: 1/20000. Not yet tested in other applications.
Concentration	1 mg/ml
Purity	≥90%
Storage Stability	-20°C/1 year
Synonyms	ANO7; NGEP; PCANAP5; TMEM16G; Anoctamin-7; Dresden transmembrane protein of the prostate; D-TMPP; IPCA-5; New gene expressed in prostate; Prostate cancer-associated protein 5; Transmembrane protein 16G
Observed Band	105kD
Cell Pathway	[Isoform 1]: Cell membrane ; Multi-pass membrane protein . Cell junction . Endoplasmic reticulum . Concentrates at sites of cell-cell contact (PubMed:17308099). Shows an intracellular localization according to PubMed:22075693 and PubMed:20056604. .; [Isoform 2]: Cytoplasm, cytosol .
Tissue Specificity	Specifically expressed in epithelial cells of the prostate (at protein level).
Function	caution:It is uncertain whether Met-1 or Met-55 is the initiator.,function:May act as a calcium-activated chloride channel. May play a role in cell-cell interactions.,induction:Up-regulated by androgen.,similarity:Belongs to the anoctamin family.,subcellular location:Concentrates at sites of cell-cell contact.,tissue specificity:Specifically expressed in epithelial cells of the prostate (at protein level).,
Background	This prostate-specific gene encodes a cytoplasmic protein, as well as a polytopic membrane protein which may serve as a target in prostate cancer diagnosis and immunotherapy. Alternative splicing results in multiple transcript variants encoding



different isoforms. [provided by RefSeq, Aug 2011],

matters needing attention

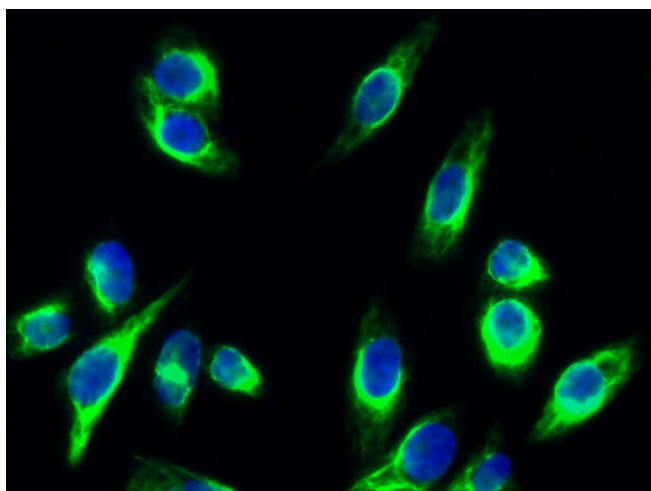
Avoid repeated freezing and thawing!

Usage suggestions

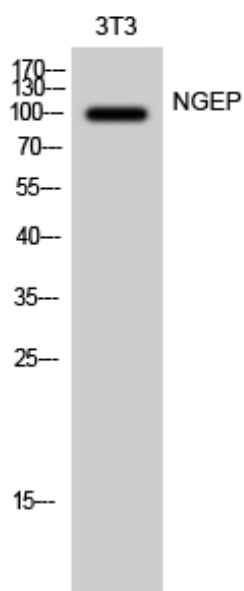
This product can be used in immunological reaction related experiments. For more information, please consult technical personnel.



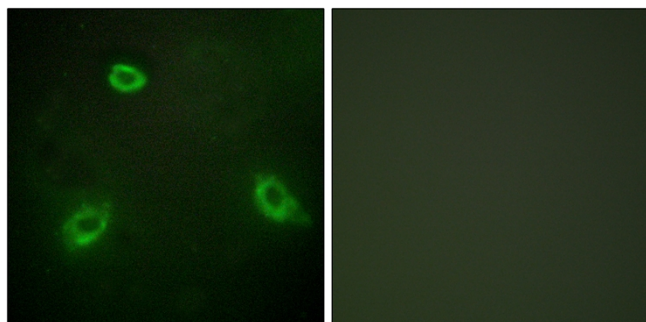
Products Images



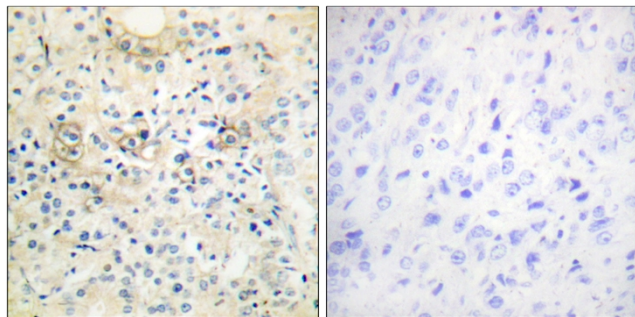
Immunofluorescence analysis of Hela cell. 1,NGEP Polyclonal Antibody(green) was diluted at 1:200(4° overnight). 2, Goat Anti Rabbit Alexa Fluor 488 Catalog:RS3211 was diluted at 1:1000(room temperature, 50min). 3 DAPI(blue) 10min.



Western Blot analysis of 3T3 cells using NGEP Polyclonal Antibody diluted at 1:1000



Immunofluorescence analysis of HepG2 cells, using TM16G Antibody. The picture on the right is blocked with the synthesized peptide.



Immunohistochemistry analysis of paraffin-embedded human prostate carcinoma tissue, using TM16G Antibody. The picture on the right is blocked with the synthesized peptide.