



Neurensin-1 Polyclonal Antibody

Catalog No	YP-Ab-04038
Isotype	IgG
Reactivity	Human;Mouse;Rat
Applications	WB;IHC;IF;ELISA
Gene Name	NRSN1
Protein Name	Neurensin-1
Immunogen	The antiserum was produced against synthesized peptide derived from human NRSN1. AA range:121-170
Specificity	Neurensin-1 Polyclonal Antibody detects endogenous levels of Neurensin-1 protein.
Formulation	Liquid in PBS containing 50% glycerol, 0.5% BSA and 0.02% sodium azide.
Source	Polyclonal, Rabbit,IgG
Purification	The antibody was affinity-purified from rabbit antiserum by affinity-chromatography using epitope-specific immunogen.
Dilution	WB: 1/500 - 1/2000. IHC: 1/100 - 1/300. ELISA: 1/40000.. IF 1:50-200
Concentration	1 mg/ml
Purity	≥90%
Storage Stability	-20°C/1 year
Synonyms	NRSN1; VMP; Neurensin-1; Neuro-p24; Vesicular membrane protein of 24 kDa; Vesicular membrane protein p24
Observed Band	25kD
Cell Pathway	Membrane ; Multi-pass membrane protein . Cell projection, neuron projection .
Tissue Specificity	Expressed in brain. Not detectable in other tissues tested.
Function	function:May play an important role in neural organelle transport, and in transduction of nerve signals or in nerve growth. May play a role in neurite extension.,similarity:Belongs to the VMP family.,subcellular location:Localizes mainly to neurites.,tissue specificity:Expressed in brain. Not detectable in other tissues tested.,
Background	function:May play an important role in neural organelle transport, and in transduction of nerve signals or in nerve growth. May play a role in neurite extension.,similarity:Belongs to the VMP family.,subcellular location:Localizes mainly to neurites.,tissue specificity:Expressed in brain. Not detectable in other tissues tested.,
matters needing attention	Avoid repeated freezing and thawing!



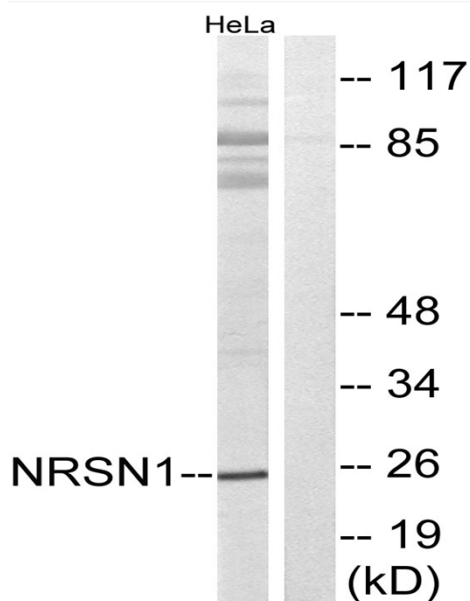
Usage suggestions

This product can be used in immunological reaction related experiments. For more information, please consult technical personnel.

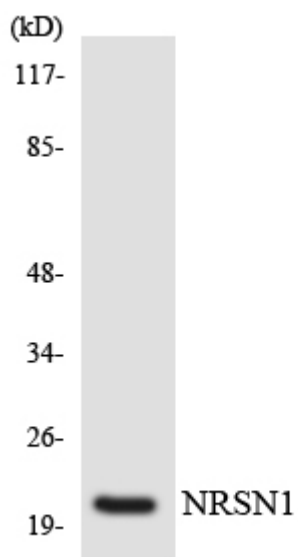
Products Images



Western Blot analysis of various cells using Neurensin-1 Polyclonal Antibody



Western blot analysis of lysates from HeLa cells, using NRSN1 Antibody. The lane on the right is blocked with the synthesized peptide.



Western blot analysis of the lysates from 293 cells using NRSN1 antibody.