



NDRG4 Polyclonal Antibody

Catalog No	YP-Ab-04034
Isotype	IgG
Reactivity	Human;Mouse;Rat
Applications	WB;IHC;IF;ELISA
Gene Name	NDRG4
Protein Name	Protein NDRG4
Immunogen	The antiserum was produced against synthesized peptide derived from human NDRG4. AA range:187-236
Specificity	NDRG4 Polyclonal Antibody detects endogenous levels of NDRG4 protein.
Formulation	Liquid in PBS containing 50% glycerol, 0.5% BSA and 0.02% sodium azide.
Source	Polyclonal, Rabbit,IgG
Purification	The antibody was affinity-purified from rabbit antiserum by affinity-chromatography using epitope-specific immunogen.
Dilution	WB: 1/500 - 1/2000. IHC: 1/100 - 1/300. ELISA: 1/40000.. IF 1:50-200
Concentration	1 mg/ml
Purity	≥90%
Storage Stability	-20°C/1 year
Synonyms	NDRG4; BDM1; KIAA1180; Protein NDRG4; Brain development-related molecule 1; N-myc downstream-regulated gene 4 protein; Vascular smooth muscle cell-associated protein 8; SMAP-8
Observed Band	34kD
Cell Pathway	Cytoplasm, cytosol .
Tissue Specificity	Expressed predominantly in brain and heart (at protein level). In the brain, detected in astrocytes. Isoform 1 and isoform 2 are only expressed in brain. Isoform 3 is expressed in both heart and brain. Up-regulated in glioblastoma multiforme cells.
Function	function:May play a role in the early postnatal development and function of neuronal cells.,similarity:Belongs to the NDRG family.,tissue specificity:Expressed only in brain and heart. Isoform 1 and isoform 2 are only expressed in brain. Isoform 3 is expressed in both heart and brain.,
Background	This gene is a member of the N-myc downregulated gene family which belongs to the alpha/beta hydrolase superfamily. The protein encoded by this gene is a cytoplasmic protein that is required for cell cycle progression and survival in primary astrocytes and may be involved in the regulation of mitogenic signalling in vascular smooth muscles cells. Alternative splicing results in multiple transcripts encoding different isoforms.[provided by RefSeq, Jun 2011],



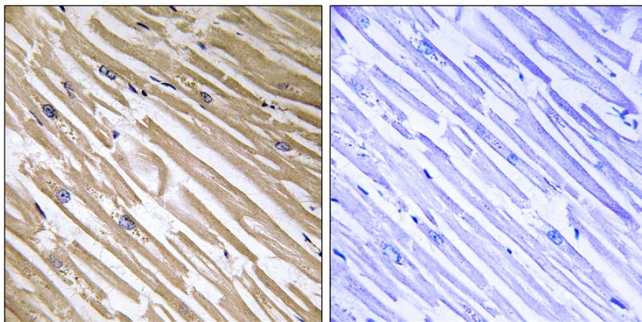
matters needing attention

Avoid repeated freezing and thawing!

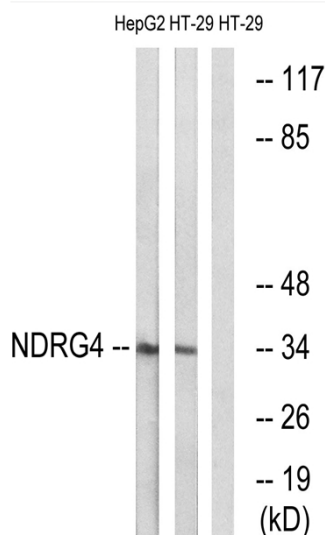
Usage suggestions

This product can be used in immunological reaction related experiments. For more information, please consult technical personnel.

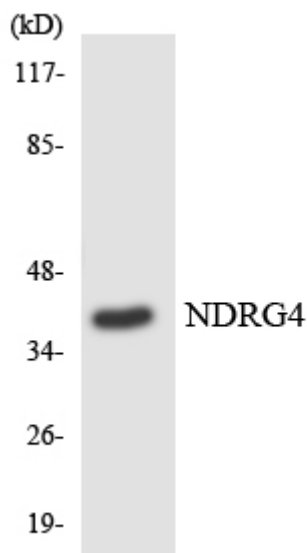
Products Images



Immunohistochemistry analysis of paraffin-embedded human heart tissue, using NDRG4 Antibody. The picture on the right is blocked with the synthesized peptide.



Western blot analysis of lysates from HT-29 and HepG2 cells, using NDRG4 Antibody. The lane on the right is blocked with the synthesized peptide.



Western blot analysis of the lysates from K562 cells using NDRG4 antibody.