

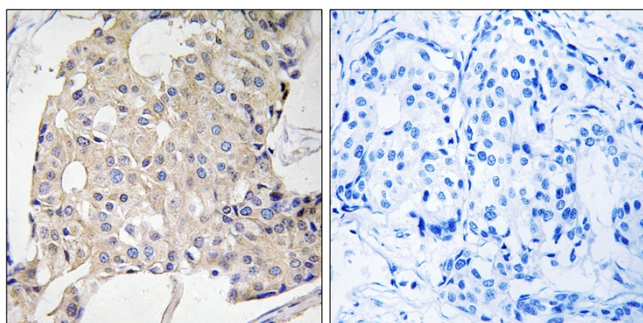


NDRG3 Polyclonal Antibody

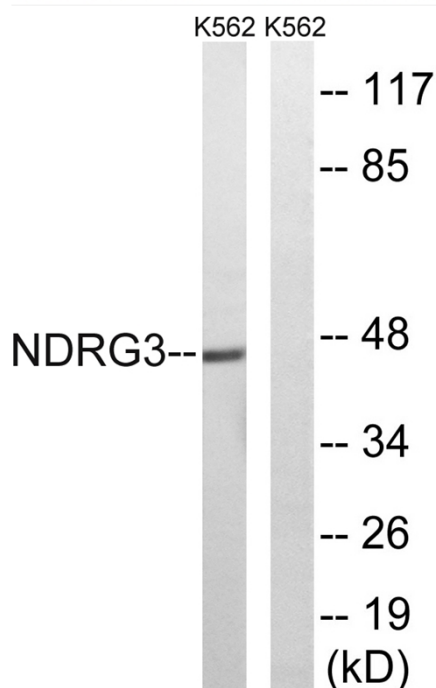
Catalog No	YP-Ab-04033
Isotype	IgG
Reactivity	Human;Mouse;Rat
Applications	WB;IHC;IF;ELISA
Gene Name	NDRG3
Protein Name	Protein NDRG3
Immunogen	The antiserum was produced against synthesized peptide derived from human NDRG3. AA range:206-255
Specificity	NDRG3 Polyclonal Antibody detects endogenous levels of NDRG3 protein.
Formulation	Liquid in PBS containing 50% glycerol, 0.5% BSA and 0.02% sodium azide.
Source	Polyclonal, Rabbit,IgG
Purification	The antibody was affinity-purified from rabbit antiserum by affinity-chromatography using epitope-specific immunogen.
Dilution	WB: 1/500 - 1/2000. IHC: 1/100 - 1/300. ELISA: 1/40000.. IF 1:50-200
Concentration	1 mg/ml
Purity	≥90%
Storage Stability	-20°C/1 year
Synonyms	NDRG3; Protein NDRG3; N-myc downstream-regulated gene 3 protein
Observed Band	45kD
Cell Pathway	cytoplasm,extracellular exosome,
Tissue Specificity	Ubiquitous. Highly expressed in brain.
Function	similarity:Belongs to the NDRG family.,tissue specificity:Ubiquitous. Highly expressed in brain.,
Background	similarity:Belongs to the NDRG family.,tissue specificity:Ubiquitous. Highly expressed in brain.,
matters needing attention	Avoid repeated freezing and thawing!
Usage suggestions	This product can be used in immunological reaction related experiments. For more information, please consult technical personnel.



Products Images



Immunohistochemistry analysis of paraffin-embedded human breast carcinoma tissue, using NDRG3 Antibody. The picture on the right is blocked with the synthesized peptide.



Western blot analysis of lysates from K562 cells, using NDRG3 Antibody. The lane on the right is blocked with the synthesized peptide.