



# Nck-2 Polyclonal Antibody

<b>Catalog No</b>	YP-Ab-04031
<b>Isotype</b>	IgG
<b>Reactivity</b>	Human;Mouse
<b>Applications</b>	IHC;IF;ELISA
<b>Gene Name</b>	NCK2
<b>Protein Name</b>	Cytoplasmic protein NCK2
<b>Immunogen</b>	The antiserum was produced against synthesized peptide derived from human NCK2. AA range:331-380
<b>Specificity</b>	Nck-2 Polyclonal Antibody detects endogenous levels of Nck-2 protein.
<b>Formulation</b>	Liquid in PBS containing 50% glycerol, 0.5% BSA and 0.02% sodium azide.
<b>Source</b>	Polyclonal, Rabbit,IgG
<b>Purification</b>	The antibody was affinity-purified from rabbit antiserum by affinity-chromatography using epitope-specific immunogen.
<b>Dilution</b>	IHC: 1/100 - 1/300. ELISA: 1/10000.. IF 1:50-200
<b>Concentration</b>	1 mg/ml
<b>Purity</b>	≥90%
<b>Storage Stability</b>	-20°C/1 year
<b>Synonyms</b>	NCK2; GRB4; Cytoplasmic protein NCK2; Growth factor receptor-bound protein 4; NCK adaptor protein 2; Nck-2; SH2/SH3 adaptor protein NCK-beta
<b>Observed Band</b>	
<b>Cell Pathway</b>	Cytoplasm . Endoplasmic reticulum .
<b>Tissue Specificity</b>	Ubiquitous.
<b>Function</b>	function:Adapter protein which associates with tyrosine-phosphorylated growth factor receptors or their cellular substrates. Maintains low levels of EIF2S1 phosphorylation by promoting its dephosphorylation by PP1.,similarity:Contains 1 SH2 domain.,similarity:Contains 1 SH3 domain.,similarity:Contains 2 SH3 domains.,similarity:Contains 3 SH3 domains.,subunit:Interacts with DOCK1, PINCH and TGFB1I1. Part of a complex containing PPP1R15B, PP1 and NCK2.,tissue specificity:Ubiquitous.,
<b>Background</b>	This gene encodes a member of the NCK family of adaptor proteins. The protein contains three SH3 domains and one SH2 domain. The protein has no known catalytic function but has been shown to bind and recruit various proteins involved in the regulation of receptor protein tyrosine kinases. It is through these regulatory activities that this protein is believed to be involved in cytoskeletal reorganization. Alternate transcriptional splice variants, encoding different isoforms, have been characterized. [provided by RefSeq, Jul 2008],

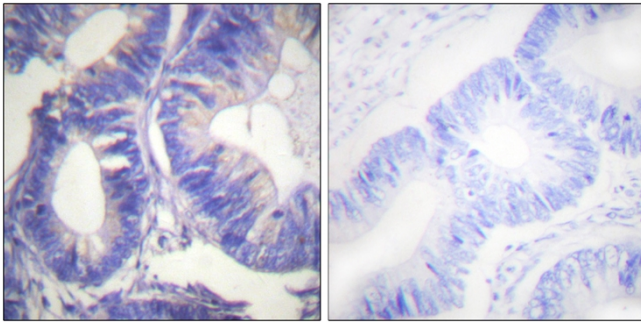
**matters needing attention**

Avoid repeated freezing and thawing!

**Usage suggestions**

This product can be used in immunological reaction related experiments. For more information, please consult technical personnel.

## Products Images



Immunohistochemistry analysis of paraffin-embedded human colon carcinoma tissue, using NCK2 Antibody. The picture on the right is blocked with the synthesized peptide.