



# NBEAL1 Polyclonal Antibody

<b>Catalog No</b>	YP-Ab-04030
<b>Isotype</b>	IgG
<b>Reactivity</b>	Human;Rat;Mouse;
<b>Applications</b>	WB;IHC;IF;ELISA
<b>Gene Name</b>	NBEAL1
<b>Protein Name</b>	Neurobeachin-like protein 1
<b>Immunogen</b>	The antiserum was produced against synthesized peptide derived from human NBEAL1. AA range:566-615
<b>Specificity</b>	NBEAL1 Polyclonal Antibody detects endogenous levels of NBEAL1 protein.
<b>Formulation</b>	Liquid in PBS containing 50% glycerol, 0.5% BSA and 0.02% sodium azide.
<b>Source</b>	Polyclonal, Rabbit,IgG
<b>Purification</b>	The antibody was affinity-purified from rabbit antiserum by affinity-chromatography using epitope-specific immunogen.
<b>Dilution</b>	WB: 1/500 - 1/2000. IHC: 1/100 - 1/300. ELISA: 1/10000.. IF 1:50-200
<b>Concentration</b>	1 mg/ml
<b>Purity</b>	≥90%
<b>Storage Stability</b>	-20°C/1 year
<b>Synonyms</b>	NBEAL1; ALS2CR16; ALS2CR17; Neurobeachin-like protein 1; Amyotrophic lateral sclerosis 2 chromosomal region candidate gene 16 protein; Amyotrophic lateral sclerosis 2 chromosomal region candidate gene 17 protein
<b>Observed Band</b>	160kD
<b>Cell Pathway</b>	endomembrane system,extrinsic component of membrane,
<b>Tissue Specificity</b>	Highly expressed in brain, kidney, prostate and testis. Weakly expressed in ovary, small intestine, colon and peripheral blood leukocytes. May be correlative to several tumors, such as ovary serous adenocarcinoma and metastasis mammary gland carcinoma breast.
<b>Function</b>	sequence caution:Translated as stop.,similarity:Belongs to the WD repeat neurobeachin family.,similarity:Contains 1 BEACH domain.,similarity:Contains 2 WD repeats.,tissue specificity:Highly expressed in brain, kidney, prostate and testis. Weakly expressed in ovary, small intestine, colon and peripheral blood leukocytes. May be correlative to several tumors, such as ovary serous adenocarcinoma and metastasis mammary gland carcinoma breast.,
<b>Background</b>	sequence caution:Translated as stop.,similarity:Belongs to the WD repeat neurobeachin family.,similarity:Contains 1 BEACH domain.,similarity:Contains 2 WD repeats.,tissue specificity:Highly expressed in brain, kidney, prostate and testis. Weakly expressed in ovary, small intestine, colon and peripheral blood



leukocytes. May be correlative to several tumors, such as ovary serous adenocarcinoma and metastasis mammary gland carcinoma breast.,

**matters needing attention**

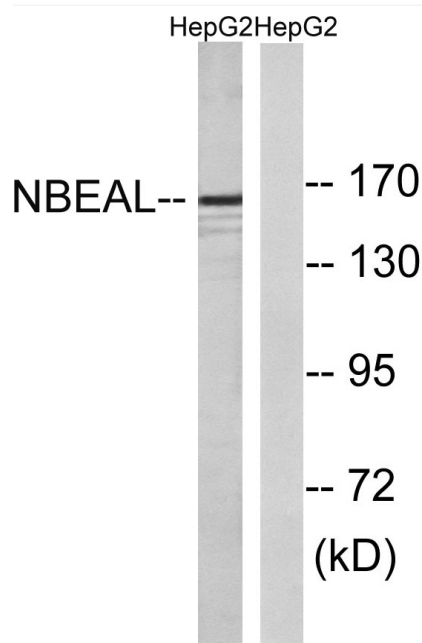
Avoid repeated freezing and thawing!

**Usage suggestions**

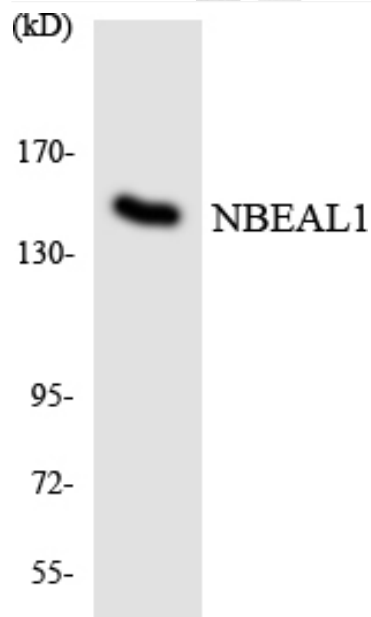
This product can be used in immunological reaction related experiments. For more information, please consult technical personnel.



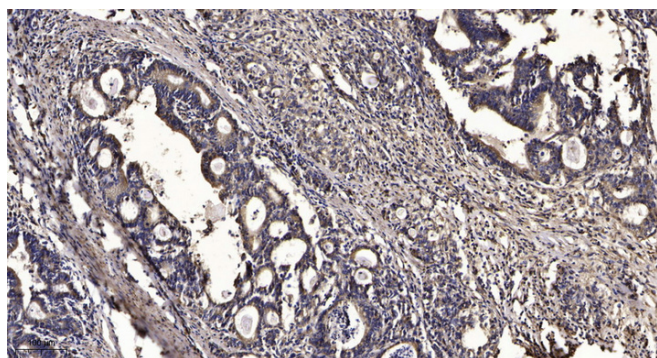
## Products Images



Western blot analysis of lysates from HepG2 cells, using NBEAL1 Antibody. The lane on the right is blocked with the synthesized peptide.



Western blot analysis of the lysates from HeLa cells using NBEAL1 antibody.



Immunohistochemical analysis of paraffin-embedded human Gastric adenocarcinoma. 1, Antibody was diluted at 1:200(4° overnight). 2, Tris-EDTA, pH9.0 was used for antigen retrieval. 3, Secondary antibody was diluted at 1:200(room temperature, 45min).