



# MRP-S12 Polyclonal Antibody

<b>Catalog No</b>	YP-Ab-04004
<b>Isotype</b>	IgG
<b>Reactivity</b>	Human;Mouse
<b>Applications</b>	WB;IHC
<b>Gene Name</b>	MRPS12
<b>Protein Name</b>	28S ribosomal protein S12 mitochondrial
<b>Immunogen</b>	The antiserum was produced against synthesized peptide derived from human MRPS12. AA range:21-70
<b>Specificity</b>	MRP-S12 Polyclonal Antibody detects endogenous levels of MRP-S12 protein.
<b>Formulation</b>	Liquid in PBS containing 50% glycerol, 0.5% BSA and 0.02% sodium azide.
<b>Source</b>	Polyclonal, Rabbit,IgG
<b>Purification</b>	The antibody was affinity-purified from rabbit antiserum by affinity-chromatography using epitope-specific immunogen.
<b>Dilution</b>	WB 1:500-2000;IHC-p 1:50-300
<b>Concentration</b>	1 mg/ml
<b>Purity</b>	≥90%
<b>Storage Stability</b>	-20°C/1 year
<b>Synonyms</b>	MRPS12; RPMS12; RPSM12; 28S ribosomal protein S12; mitochondrial; MRP-S12; S12mt; MT-RPS12
<b>Observed Band</b>	20kD
<b>Cell Pathway</b>	Mitochondrion .
<b>Tissue Specificity</b>	Brain,Colon,Liver,Skin,
<b>Function</b>	similarity:Belongs to the ribosomal protein S12P family..subunit:Component of the mitochondrial ribosome small subunit (28S) which comprises a 12S rRNA and about 30 distinct proteins.,
<b>Background</b>	Mammalian mitochondrial ribosomal proteins are encoded by nuclear genes and help in protein synthesis within the mitochondrion. Mitochondrial ribosomes (mitoribosomes) consist of a small 28S subunit and a large 39S subunit. They have an estimated 75% protein to rRNA composition compared to prokaryotic ribosomes, where this ratio is reversed. Another difference between mammalian mitoribosomes and prokaryotic ribosomes is that the latter contain a 5S rRNA. Among different species, the proteins comprising the mitoribosome differ greatly in sequence, and sometimes in biochemical properties, which prevents easy recognition by sequence homology. This gene encodes a 28S subunit protein that belongs to the ribosomal protein S12P family. The encoded protein is a key component of the ribosomal small subunit and controls the decoding fidelity and



susceptibility to aminoglycoside antibiotics. Th

**matters needing attention**

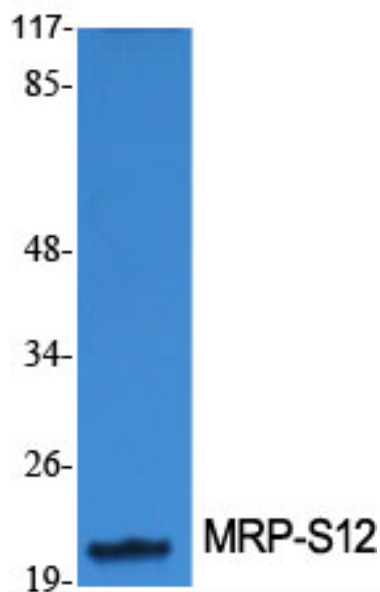
Avoid repeated freezing and thawing!

**Usage suggestions**

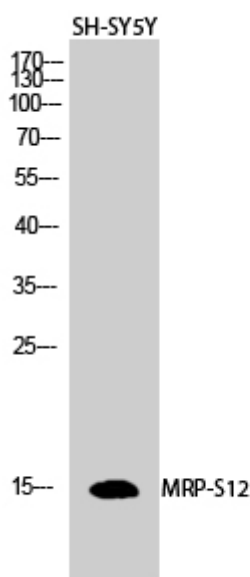
This product can be used in immunological reaction related experiments. For more information, please consult technical personnel.

**Products Images**

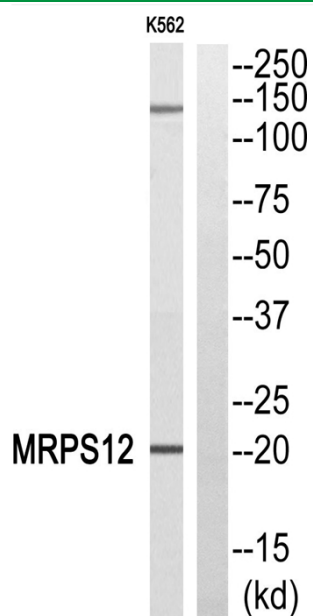
(kD)



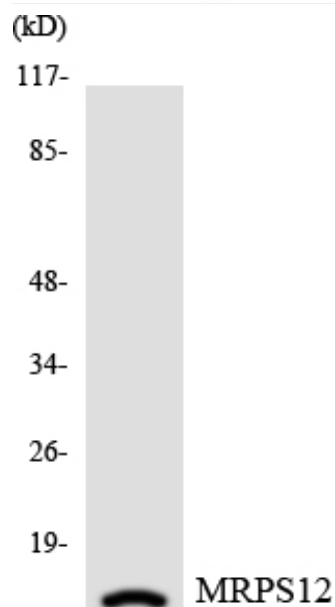
Western Blot analysis of various cells using MRP-S12 Polyclonal Antibody diluted at 1:1000



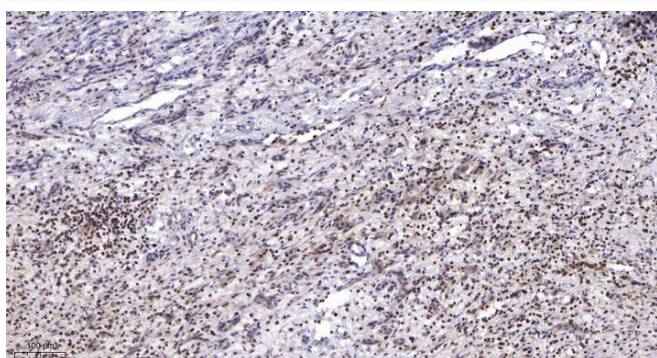
Western Blot analysis of SH-SY5Y cells using MRP-S12 Polyclonal Antibody diluted at 1:1000



Western blot analysis of MRPS12 Antibody. The lane on the right is blocked with the MRPS12 peptide.



Western blot analysis of the lysates from HepG2 cells using MRPS12 antibody.



Immunohistochemical analysis of paraffin-embedded human liver cancer. 1, Antibody was diluted at 1:200(4° overnight). 2, Tris-EDTA,pH9.0 was used for antigen retrieval. 3,Secondary antibody was diluted at 1:200(room temperature, 45min).