

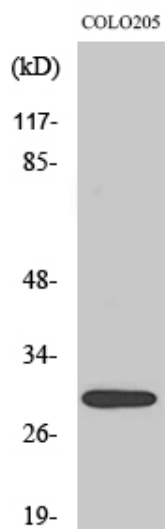


# MRP-L9 Polyclonal Antibody

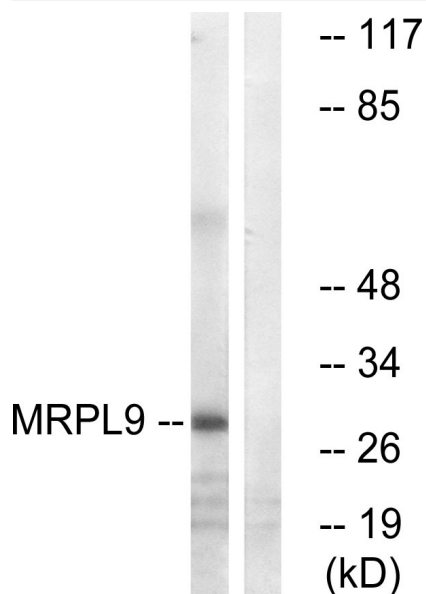
<b>Catalog No</b>	YP-Ab-04003
<b>Isotype</b>	IgG
<b>Reactivity</b>	Human;Rat;Mouse;
<b>Applications</b>	WB;IHC
<b>Gene Name</b>	MRPL9
<b>Protein Name</b>	39S ribosomal protein L9 mitochondrial
<b>Immunogen</b>	The antiserum was produced against synthesized peptide derived from human MRPL9. AA range:211-260
<b>Specificity</b>	MRP-L9 Polyclonal Antibody detects endogenous levels of MRP-L9 protein.
<b>Formulation</b>	Liquid in PBS containing 50% glycerol, 0.5% BSA and 0.02% sodium azide.
<b>Source</b>	Polyclonal, Rabbit,IgG
<b>Purification</b>	The antibody was affinity-purified from rabbit antiserum by affinity-chromatography using epitope-specific immunogen.
<b>Dilution</b>	WB 1:500-2000;IHC-p 1:50-300
<b>Concentration</b>	1 mg/ml
<b>Purity</b>	≥90%
<b>Storage Stability</b>	-20°C/1 year
<b>Synonyms</b>	MRPL9; 39S ribosomal protein L9; mitochondrial; L9mt; MRP-L9
<b>Observed Band</b>	30kD
<b>Cell Pathway</b>	Mitochondrion .
<b>Tissue Specificity</b>	Lung,
<b>Function</b>	similarity:Belongs to the ribosomal protein L9P family.,
<b>Background</b>	This is a nuclear gene encoding a protein component of the 39S subunit of the mitochondrial ribosome. Alternative splicing results in multiple transcript variants. A pseudogene of this gene is found on chromosome 8. [provided by RefSeq, Jul 2014],
<b>matters needing attention</b>	Avoid repeated freezing and thawing!
<b>Usage suggestions</b>	This product can be used in immunological reaction related experiments. For more information, please consult technical personnel.



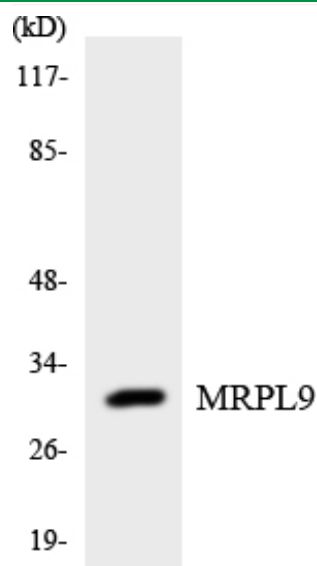
## Products Images



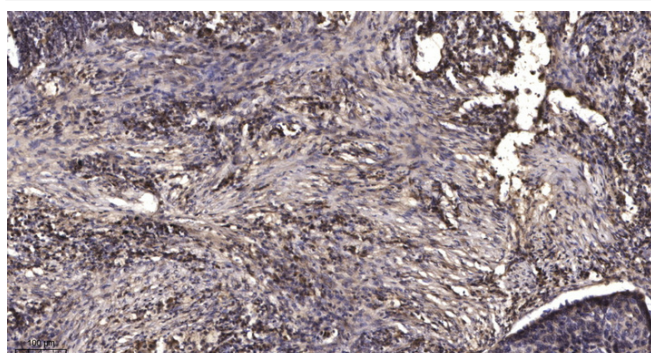
Western Blot analysis of various cells using MRP-L9 Polyclonal Antibody



Western blot analysis of lysates from COLO cells, using MRPL9 Antibody. The lane on the right is blocked with the synthesized peptide.



Western blot analysis of the lysates from HUVECcells using MRPL9 antibody.



Immunohistochemical analysis of paraffin-embedded human Squamous cell carcinoma of lung. 1, Antibody was diluted at 1:200(4° overnight). 2, Tris-EDTA,pH9.0 was used for antigen retrieval. 3, Secondary antibody was diluted at 1:200(room temperature, 45min).