



# MRP-L50 Polyclonal Antibody

|                           |   |
|---------------------------|---|
| <b>Catalog No</b>         | YP-Ab-03999   |
| <b>Isotype</b>            | IgG   |
| <b>Reactivity</b>         | Human;Rat;Mouse;  |
| <b>Applications</b>       | WB;ELISA;IHC  |
| <b>Gene Name</b>          | MRPL50  |
| <b>Protein Name</b>       | 39S ribosomal protein L50 mitochondrial   |
| <b>Immunogen</b>          | The antiserum was produced against synthesized peptide derived from human MRPL50. AA range:109-158  |
| <b>Specificity</b>        | MRP-L50 Polyclonal Antibody detects endogenous levels of MRP-L50 protein.   |
| <b>Formulation</b>        | Liquid in PBS containing 50% glycerol, 0.5% BSA and 0.02% sodium azide.   |
| <b>Source</b>             | Polyclonal, Rabbit,IgG  |
| <b>Purification</b>       | The antibody was affinity-purified from rabbit antiserum by affinity-chromatography using epitope-specific immunogen.   |
| <b>Dilution</b>           | WB 1:500-2000;IHC-p 1:50-300; ELISA 2000-20000  |
| <b>Concentration</b>      | 1 mg/ml   |
| <b>Purity</b>             | ≥90%  |
| <b>Storage Stability</b>  | -20°C/1 year  |
| <b>Synonyms</b>           | MRPL50; 39S ribosomal protein L50; mitochondrial; L50mt; MRP-L50  |
| <b>Observed Band</b>      | 22kD  |
| <b>Cell Pathway</b>       | Mitochondrion .   |
| <b>Tissue Specificity</b> | Carcinoma,Epithelium,Hepatoma,Skin,   |
| <b>Function</b>           |   |
| <b>Background</b>         | Mammalian mitochondrial ribosomal proteins are encoded by nuclear genes and help in protein synthesis within the mitochondrion. Mitochondrial ribosomes (mitoribosomes) consist of a small 28S subunit and a large 39S subunit. They have an estimated 75% protein to rRNA composition compared to prokaryotic ribosomes, where this ratio is reversed. Another difference between mammalian mitoribosomes and prokaryotic ribosomes is that the latter contain a 5S rRNA. Among different species, the proteins comprising the mitoribosome differ greatly in sequence, and sometimes in biochemical properties, which prevents easy recognition by sequence homology. This gene encodes a putative 39S subunit protein and belongs to the L47P ribosomal protein family. Pseudogenes corresponding to this gene are found on chromosomes 2p, 2q, 5p, and 10q. [provided by RefSeq, Jul 2008], |



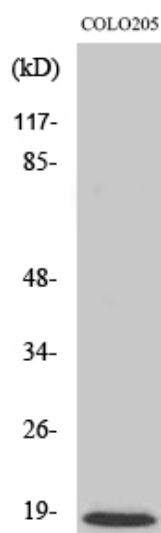
### matters needing attention

Avoid repeated freezing and thawing!

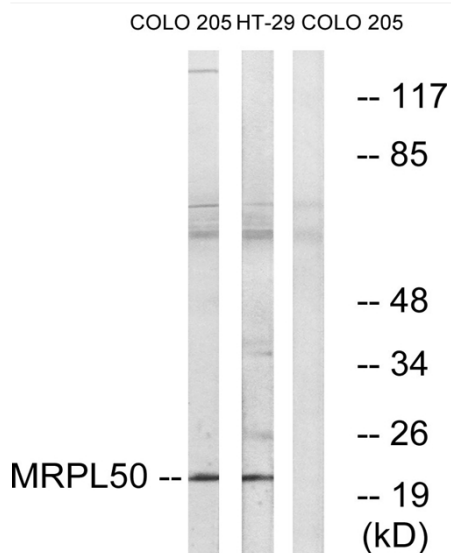
### Usage suggestions

This product can be used in immunological reaction related experiments. For more information, please consult technical personnel.

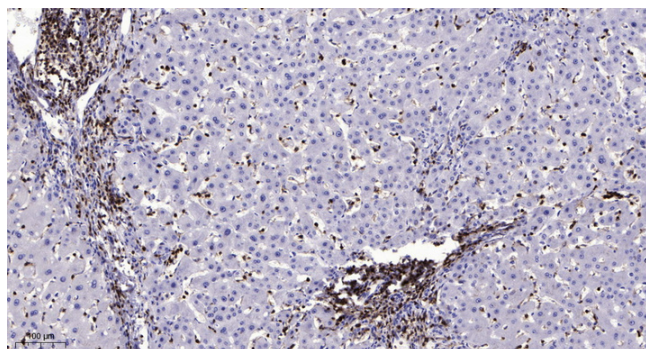
## Products Images



Western Blot analysis of various cells using MRP-L50 Polyclonal Antibody



Western blot analysis of lysates from COLO and HT-29 cells, using MRPL50 Antibody. The lane on the right is blocked with the synthesized peptide.



Immunohistochemical analysis of paraffin-embedded human liver cancer. 1, Antibody was diluted at 1:200(4° overnight). 2, Tris-EDTA,pH9.0 was used for antigen retrieval. 3,Secondary antibody was diluted at 1:200(room temperature, 45min).