

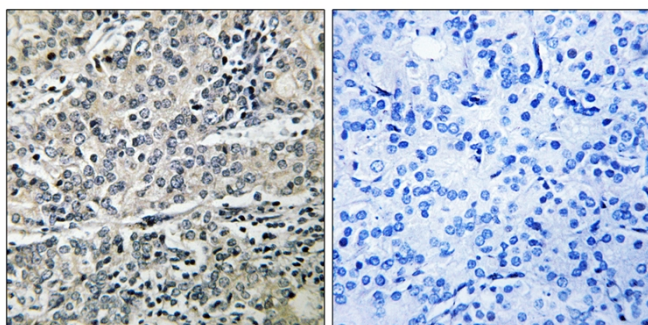


# MP68 Polyclonal Antibody

<b>Catalog No</b>	YP-Ab-03969
<b>Isotype</b>	IgG
<b>Reactivity</b>	Human;Mouse
<b>Applications</b>	IHC;IF;ELISA
<b>Gene Name</b>	MP68
<b>Protein Name</b>	6.8 kDa mitochondrial proteolipid
<b>Immunogen</b>	The antiserum was produced against synthesized peptide derived from human MP68. AA range:9-58
<b>Specificity</b>	MP68 Polyclonal Antibody detects endogenous levels of MP68 protein.
<b>Formulation</b>	Liquid in PBS containing 50% glycerol, 0.5% BSA and 0.02% sodium azide.
<b>Source</b>	Polyclonal, Rabbit,IgG
<b>Purification</b>	The antibody was affinity-purified from rabbit antiserum by affinity-chromatography using epitope-specific immunogen.
<b>Dilution</b>	IHC: 1/100 - 1/300. ELISA: 1/20000.. IF 1:50-200
<b>Concentration</b>	1 mg/ml
<b>Purity</b>	≥90%
<b>Storage Stability</b>	-20°C/1 year
<b>Synonyms</b>	MP68; C14orf2; 6.8 kDa mitochondrial proteolipid
<b>Observed Band</b>	
<b>Cell Pathway</b>	Mitochondrion membrane ; Single-pass membrane protein .
<b>Tissue Specificity</b>	Fetal liver,Lung,Neuroblastoma,Umbilical cord blood,
<b>Function</b>	similarity:Belongs to the small mitochondrial proteolipid family.,
<b>Background</b>	similarity:Belongs to the small mitochondrial proteolipid family.,
<b>matters needing attention</b>	Avoid repeated freezing and thawing!
<b>Usage suggestions</b>	This product can be used in immunological reaction related experiments. For more information, please consult technical personnel.



## Products Images



Immunohistochemistry analysis of paraffin-embedded human prostate carcinoma tissue, using MP68 Antibody. The picture on the right is blocked with the synthesized peptide.