



# MIPP Polyclonal Antibody

<b>Catalog No</b>	YP-Ab-03960
<b>Isotype</b>	IgG
<b>Reactivity</b>	Human;Mouse;Rat
<b>Applications</b>	WB;IHC;IF;ELISA
<b>Gene Name</b>	MINPP1
<b>Protein Name</b>	Multiple inositol polyphosphate phosphatase 1
<b>Immunogen</b>	The antiserum was produced against synthesized peptide derived from human MINPP1. AA range:328-377
<b>Specificity</b>	MIPP Polyclonal Antibody detects endogenous levels of MIPP protein.
<b>Formulation</b>	Liquid in PBS containing 50% glycerol, 0.5% BSA and 0.02% sodium azide.
<b>Source</b>	Polyclonal, Rabbit,IgG
<b>Purification</b>	The antibody was affinity-purified from rabbit antiserum by affinity-chromatography using epitope-specific immunogen.
<b>Dilution</b>	WB: 1/500 - 1/2000. IHC: 1/100 - 1/300. ELISA: 1/10000.. IF 1:50-200
<b>Concentration</b>	1 mg/ml
<b>Purity</b>	≥90%
<b>Storage Stability</b>	-20°C/1 year
<b>Synonyms</b>	MINPP1; MIPP; Multiple inositol polyphosphate phosphatase 1; 2; 3-bisphosphoglycerate 3-phosphatase; 2,3-BPG phosphatase; Inositol; 1,3,4,5)-tetrakisphosphate 3-phosphatase; Ins(1,3,4,5)P(4) 3-phosphatase
<b>Observed Band</b>	60kD
<b>Cell Pathway</b>	Endoplasmic reticulum lumen .
<b>Tissue Specificity</b>	Widely expressed with highest levels in kidney, liver and placenta.
<b>Function</b>	catalytic activity:Myo-inositol hexakisphosphate + H(2)O = myo-inositol pentakisphosphate (mixed isomers) + phosphate.,disease:Defects in MINPP1 may be involved in follicular thyroid tumors development.,function:Acts as a phosphoinositide 5- and phosphoinositide 6-phosphatase and regulates cellular levels of inositol pentakisphosphate (InsP5) and inositol hexakisphosphate (InsP6) (By similarity). May play a role in bone development (endochondral ossification).,tissue specificity:Widely expressed with highest levels in kidney, liver and placenta.,
<b>Background</b>	This gene encodes multiple inositol polyphosphate phosphatase; an enzyme that removes 3-phosphate from inositol phosphate substrates. It is the only enzyme known to hydrolzye inositol pentakisphosphate and inositol hexakisphosphate. This enzyme also converts 2,3 bisphosphoglycerate (2,3-BPG) to



2-phosphoglycerate; an activity formerly thought to be exclusive to 2,3-BPG synthase/2-phosphatase (BPGM) in the Rapoport-Luebering shunt of the glycolytic pathway.[provided by RefSeq, Sep 2009],

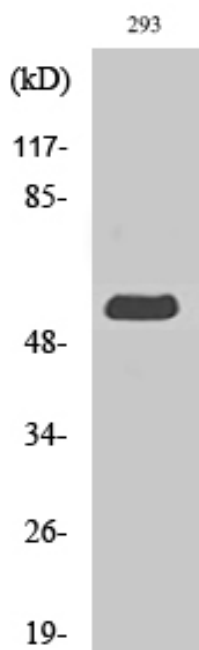
**matters needing attention**

Avoid repeated freezing and thawing!

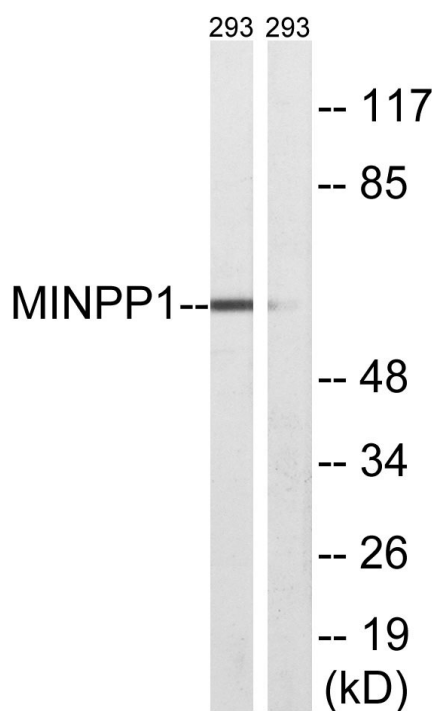
**Usage suggestions**

This product can be used in immunological reaction related experiments. For more information, please consult technical personnel.

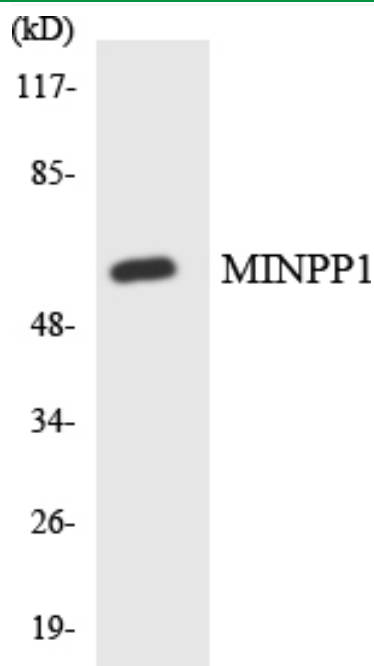
**Products Images**



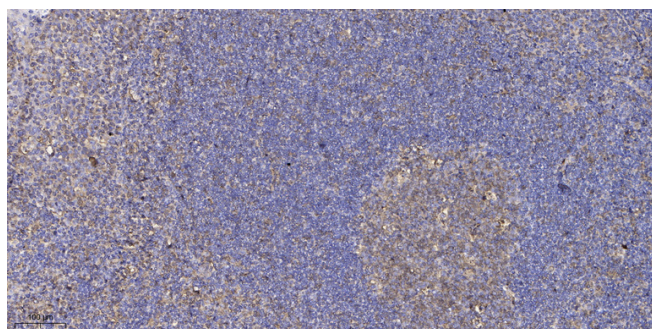
Western Blot analysis of various cells using MIPP Polyclonal Antibody



Western blot analysis of lysates from 293 cells, using MINPP1 Antibody. The lane on the right is blocked with the synthesized peptide.



Western blot analysis of the lysates from HepG2 cells using MINPP1 antibody.



Immunohistochemical analysis of paraffin-embedded human tonsil. 1, Antibody was diluted at 1:200(4° overnight). 2, Tris-EDTA,pH9.0 was used for antigen retrieval. 3,Secondary antibody was diluted at 1:200(room temperature, 30min).