



KANK2 Polyclonal Antibody

Catalog No	YP-Ab-03941
Isotype	IgG
Reactivity	Human;Rat;Mouse;
Applications	IHC;IF;ELISA
Gene Name	KANK2
Protein Name	KN motif and ankyrin repeat domain-containing protein 2
Immunogen	The antiserum was produced against synthesized peptide derived from human KANK2. AA range:351-400
Specificity	KANK2 Polyclonal Antibody detects endogenous levels of KANK2 protein.
Formulation	Liquid in PBS containing 50% glycerol, 0.5% BSA and 0.02% sodium azide.
Source	Polyclonal, Rabbit,IgG
Purification	The antibody was affinity-purified from rabbit antiserum by affinity-chromatography using epitope-specific immunogen.
Dilution	Immunohistochemistry: 1/100 - 1/300. Immunofluorescence: 1/200 - 1/1000. ELISA: 1/40000. Not yet tested in other applications.
Concentration	1 mg/ml
Purity	≥90%
Storage Stability	-20°C/1 year
Synonyms	KANK2; ANKRD25; KIAA1518; MXRA3; SIP; KN motif and ankyrin repeat domain-containing protein 2; Ankyrin repeat domain-containing protein 25; Matrix-remodeling-associated protein 3; SRC-1-interacting protein; SIP; SRC-interacting protein; SRC
Observed Band	
Cell Pathway	Cytoplasm . Mitochondrion .
Tissue Specificity	Strongly expressed in cervix, colon, heart, kidney and lung. Expressed in kidney glomerular podocytes and mesangial cells (at protein level).
Function	PTM:Phosphorylated upon DNA damage, probably by ATM or ATR.,similarity:Contains 5 ANK repeats.,tissue specificity:Strongly expressed in cervix, colon, heart, kidney and lung.,
Background	This gene encodes a member of the KN motif and ankyrin repeat domains (KANK) family of proteins, which play a role in cytoskeletal formation by regulating actin polymerization. The encoded protein functions in the sequestration of steroid receptor coactivators and possibly other proteins. Mutations in this gene are associated with impaired kidney podocyte function and nephrotic syndrome, and keratoderma and woolly hair. [provided by RefSeq, Jul 2016],

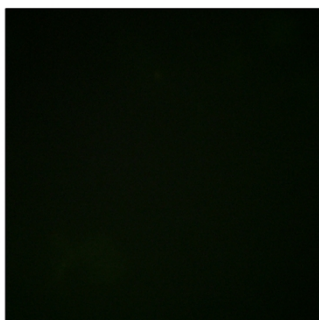
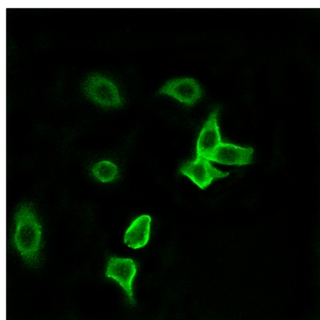
**matters needing attention**

Avoid repeated freezing and thawing!

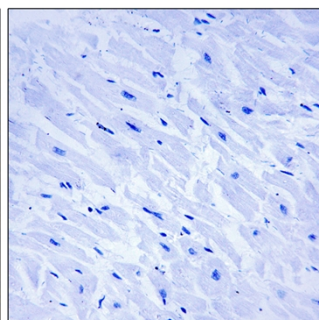
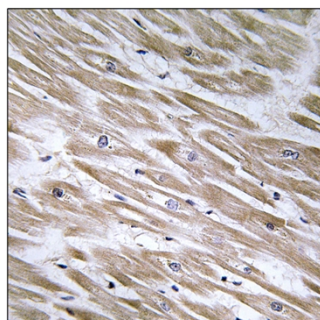
Usage suggestions

This product can be used in immunological reaction related experiments. For more information, please consult technical personnel.

Products Images



Immunofluorescence analysis of A549 cells, using KANK2 Antibody. The picture on the right is blocked with the synthesized peptide.



Immunohistochemistry analysis of paraffin-embedded human heart tissue, using KANK2 Antibody. The picture on the right is blocked with the synthesized peptide.