



IFITM3 Polyclonal Antibody

Catalog No	YP-Ab-03930
Isotype	IgG
Reactivity	Human;Rat;Mouse;
Applications	WB;IF;ELISA
Gene Name	IFITM3
Protein Name	Interferon-induced transmembrane protein 3
Immunogen	The antiserum was produced against synthesized peptide derived from human IFM3. AA range:1-50
Specificity	IFITM3 Polyclonal Antibody detects endogenous levels of IFITM3 protein.
Formulation	Liquid in PBS containing 50% glycerol, 0.5% BSA and 0.02% sodium azide.
Source	Polyclonal, Rabbit,IgG
Purification	The antibody was affinity-purified from rabbit antiserum by affinity-chromatography using epitope-specific immunogen.
Dilution	Western Blot: 1/500 - 1/2000. Immunofluorescence: 1/200 - 1/1000. ELISA: 1/40000. Not yet tested in other applications.
Concentration	1 mg/ml
Purity	≥90%
Storage Stability	-20°C/1 year
Synonyms	IFITM3; Interferon-induced transmembrane protein 3; Dispanin subfamily A member 2b; DSPA2b; Interferon-inducible protein 1-8U
Observed Band	15kD
Cell Pathway	Cell membrane ; Single-pass type II membrane protein . Late endosome membrane ; Single-pass type II membrane protein . Early endosome membrane ; Single-pass type II membrane protein. Lysosome membrane ; Single-pass type II membrane protein . Cytoplasm, perinuclear region . Co-localizes with BRI3 isoform 1 at the perinuclear region. .
Tissue Specificity	Brain,Cervix,Vascular endothelial cell,
Function	induction:By alpha and gamma interferons.,similarity:Belongs to the CD225 family.,
Background	The protein encoded by this gene is an interferon-induced membrane protein that helps confer immunity to influenza A H1N1 virus, West Nile virus, and dengue virus. Two transcript variants, only one of them protein-coding, have been found for this gene. Another variant encoding an N-terminally truncated isoform has been reported, but the full-length nature of this variant has not been determined. [provided by RefSeq, May 2012],



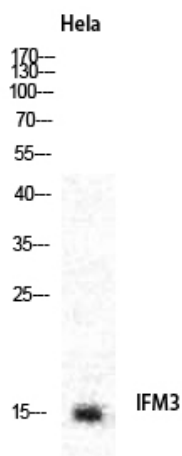
matters needing attention

Avoid repeated freezing and thawing!

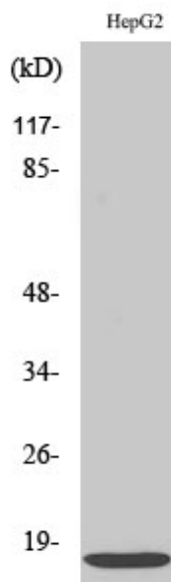
Usage suggestions

This product can be used in immunological reaction related experiments. For more information, please consult technical personnel.

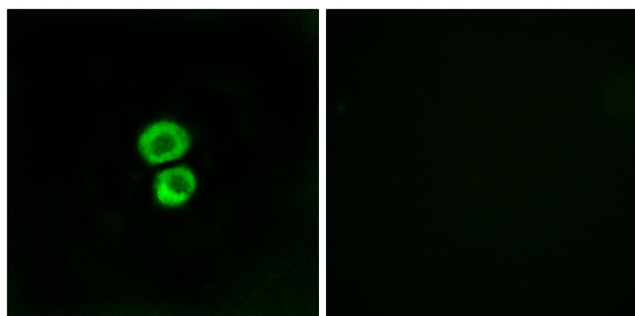
Products Images



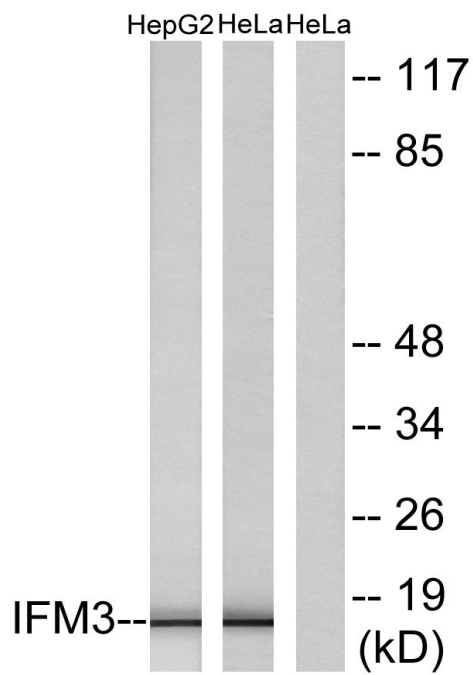
Western Blot analysis of various cells using IFITM3 Polyclonal Antibody diluted at 1:2000



Western Blot analysis of HeLa cells using IFITM3 Polyclonal Antibody diluted at 1:2000



Immunofluorescence analysis of MCF7 cells, using IFM3 Antibody. The picture on the right is blocked with the synthesized peptide.



Western blot analysis of lysates from HepG2 and HeLa cells, using IFM3 Antibody. The lane on the right is blocked with the synthesized peptide.