



GCSm-γ Polyclonal Antibody

Catalog No	YP-Ab-03896
Isotype	IgG
Reactivity	Human;Mouse;Rat;Monkey
Applications	WB;IHC;IF;ELISA
Gene Name	GCLM
Protein Name	Glutamate--cysteine ligase regulatory subunit
Immunogen	The antiserum was produced against synthesized peptide derived from human GCSm-gamma. AA range:42-91
Specificity	GCSm-γ Polyclonal Antibody detects endogenous levels of GCSm-γ protein.
Formulation	Liquid in PBS containing 50% glycerol, 0.5% BSA and 0.02% sodium azide.
Source	Polyclonal, Rabbit,IgG
Purification	The antibody was affinity-purified from rabbit antiserum by affinity-chromatography using epitope-specific immunogen.
Dilution	WB: 1/500 - 1/2000. IHC: 1/100 - 1/300. ELISA: 1/10000.. IF 1:50-200
Concentration	1 mg/ml
Purity	≥90%
Storage Stability	-20°C/1 year
Synonyms	GCLM; GLCLR; Glutamate--cysteine ligase regulatory subunit; GCS light chain; Gamma-ECS regulatory subunit; Gamma-glutamylcysteine synthetase regulatory subunit; Glutamate--cysteine ligase modifier subunit
Observed Band	31kD
Cell Pathway	cytosol,glutamate-cysteine ligase complex,
Tissue Specificity	In all tissues examined. Highest levels in skeletal muscle.
Function	pathway:Sulfur metabolism; glutathione biosynthesis; glutathione from L-cysteine and L-glutamate: step 1/2.,similarity:Belongs to the aldo/keto reductase family. Glutamate--cysteine ligase light chain subfamily.,subunit:Heterodimer of a catalytic heavy chain and a regulatory light chain.,tissue specificity:In all tissues examined. Highest levels in skeletal muscle.,
Background	Glutamate-cysteine ligase, also known as gamma-glutamylcysteine synthetase, is the first rate limiting enzyme of glutathione synthesis. The enzyme consists of two subunits, a heavy catalytic subunit and a light regulatory subunit. Gamma glutamylcysteine synthetase deficiency has been implicated in some forms of hemolytic anemia. Alternative splicing results in multiple transcript variants encoding different isoforms. [provided by RefSeq, Apr 2015],



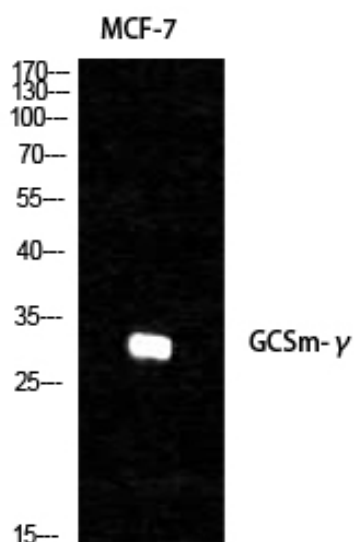
matters needing attention

Avoid repeated freezing and thawing!

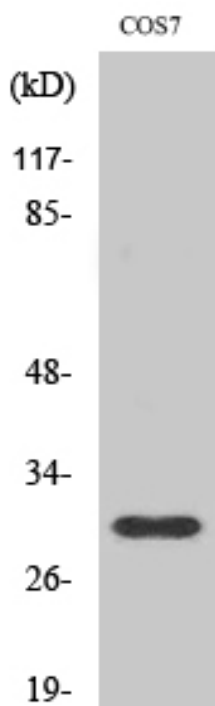
Usage suggestions

This product can be used in immunological reaction related experiments. For more information, please consult technical personnel.

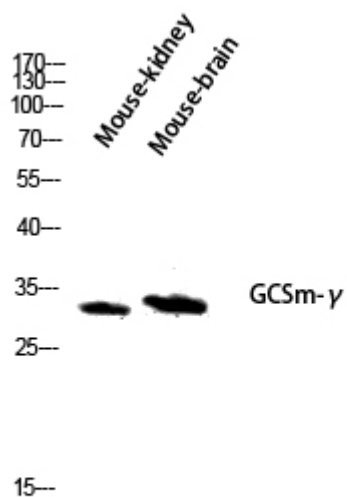
Products Images



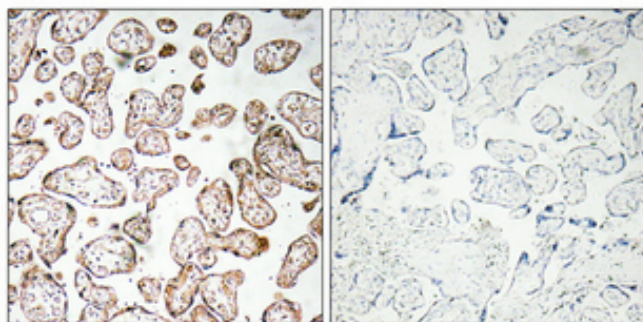
Western Blot analysis of various cells using GCSm- γ Polyclonal Antibody diluted at 1:1000



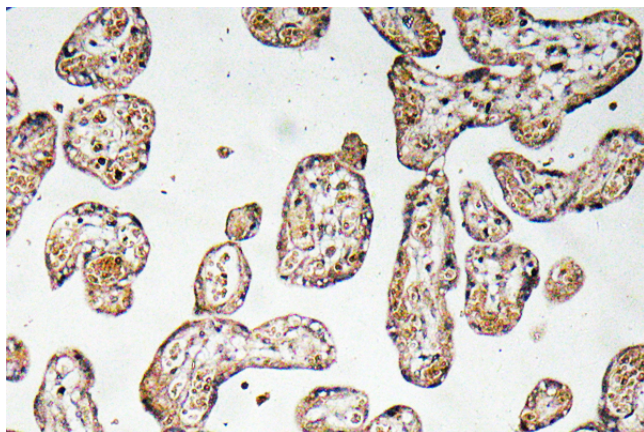
Western Blot analysis of COS7 cells using GCSm- γ Polyclonal Antibody diluted at 1:1000



Western blot analysis of Mouse-kidney mouse-brain lysis using GCSm- γ antibody. Antibody was diluted at 1:1000



Immunohistochemical analysis of paraffin-embedded Human placenta. Antibody was diluted at 1:100 (4° overnight). High-pressure and temperature Tris-EDTA, pH 8.0 was used for antigen retrieval. Negative control (right) obtained from antibody was pre-absorbed by immunogen peptide.



Immunohistochemistry analysis of GCSm- γ antibody in paraffin-embedded human prostate carcinoma tissue.