



FUT2 Polyclonal Antibody

Catalog No	YP-Ab-03881
Isotype	IgG
Reactivity	Human;Rat;Mouse;
Applications	IHC;IF;ELISA
Gene Name	FUT2
Protein Name	Galactoside 2-alpha-L-fucosyltransferase 2
Immunogen	Synthesized peptide derived from the Internal region of human FUT2.
Specificity	FUT2 Polyclonal Antibody detects endogenous levels of FUT2 protein.
Formulation	Liquid in PBS containing 50% glycerol, 0.5% BSA and 0.02% sodium azide.
Source	Polyclonal, Rabbit,IgG
Purification	The antibody was affinity-purified from rabbit antiserum by affinity-chromatography using epitope-specific immunogen.
Dilution	IHC: 1/100 - 1/300. ELISA: 1/20000.. IF 1:50-200
Concentration	1 mg/ml
Purity	≥90%
Storage Stability	-20°C/1 year
Synonyms	FUT2; SEC2; Galactoside 2-alpha-L-fucosyltransferase 2; Alpha(1; 2)FT 2; Fucosyltransferase 2; GDP-L-fucose:beta-D-galactoside 2-alpha-L-fucosyltransferase 2; SE2; Secretor blood group alpha-2-fucosyltransferase; Secretor factor; Se
Observed Band	
Cell Pathway	Golgi apparatus, Golgi stack membrane; Single-pass type II membrane protein. Membrane-bound form in trans cisternae of Golgi.
Tissue Specificity	Small intestine, colon and lung.
Function	catalytic activity:GDP-beta-L-fucose + beta-D-galactosyl-(1->3)-N-acetyl-beta-D-glucosaminyl-(1->3)-beta-D-galactosyl-(1->4)-beta-D-glucosyl-(1<->1)-ceramide = GDP + alpha-L-fucosyl-(1->2)-beta-D-galactosyl-(1->3)-N-acetyl-beta-D-glucosaminyl-(1->3)-beta-D-galactosyl-(1->4)-beta-D-glucosyl-(1<->1)-ceramide.,disease:Genetic variation in FUT2 is associated with vitamin B12 plasma level quantitative trait locus type 1 (B12QTL1) [MIM:612542]. The plasma level of vitamin B12 is a modifiable quantitative trait associated with many diseases. Vitamin B12 found in meat and milk products is composed of corrin and cobalt rings and is necessary for the formation of red blood cells, DNA synthesis during cell division, and maintenance of the myelin nerve sheath, among other functions. Deficiency in vitamin B12, clinically associated with pernicious anemia, cardiovascular disease,



cancer, and neurodege

Background

The protein encoded by this gene is a Golgi stack membrane protein that is involved in the creation of a precursor of the H antigen, which is required for the final step in the soluble A and B antigen synthesis pathway. This gene is one of two encoding the galactoside 2-L-fucosyltransferase enzyme. Two transcript variants encoding the same protein have been found for this gene. [provided by RefSeq, Jul 2008],

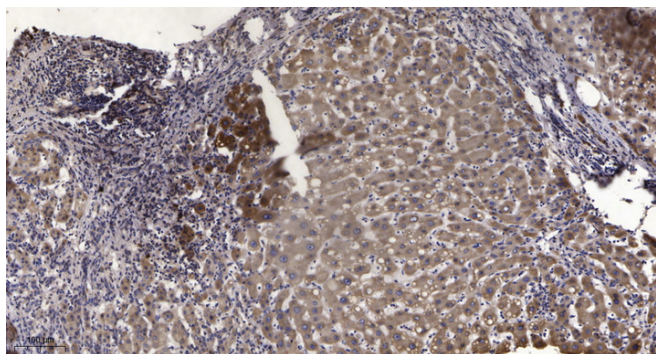
matters needing attention

Avoid repeated freezing and thawing!

Usage suggestions

This product can be used in immunological reaction related experiments. For more information, please consult technical personnel.

Products Images



Immunohistochemical analysis of paraffin-embedded human liver cancer. 1, Antibody was diluted at 1:200(4° overnight). 2, Tris-EDTA,pH9.0 was used for antigen retrieval. 3,Secondary antibody was diluted at 1:200(room temperature, 45min).