



# FRS3 Polyclonal Antibody

<b>Catalog No</b>	YP-Ab-03878
<b>Isotype</b>	IgG
<b>Reactivity</b>	Human;Monkey
<b>Applications</b>	WB;ELISA
<b>Gene Name</b>	FRS3
<b>Protein Name</b>	Fibroblast growth factor receptor substrate 3
<b>Immunogen</b>	The antiserum was produced against synthesized peptide derived from human FRS3. AA range:191-240
<b>Specificity</b>	FRS3 Polyclonal Antibody detects endogenous levels of FRS3 protein.
<b>Formulation</b>	Liquid in PBS containing 50% glycerol, 0.5% BSA and 0.02% sodium azide.
<b>Source</b>	Polyclonal, Rabbit,IgG
<b>Purification</b>	The antibody was affinity-purified from rabbit antiserum by affinity-chromatography using epitope-specific immunogen.
<b>Dilution</b>	Western Blot: 1/500 - 1/2000. ELISA: 1/40000. Not yet tested in other applications.
<b>Concentration</b>	1 mg/ml
<b>Purity</b>	≥90%
<b>Storage Stability</b>	-20°C/1 year
<b>Synonyms</b>	FRS3; Fibroblast growth factor receptor substrate 3; FGFR substrate 3; FGFR-signaling adaptor SNT2; Suc1-associated neurotrophic factor target 2; SNT-2
<b>Observed Band</b>	54kD
<b>Cell Pathway</b>	Membrane; Lipid-anchor.
<b>Tissue Specificity</b>	Brain,Placenta,
<b>Function</b>	function:Adapter protein that links FGR and NGF receptors to downstream signaling pathways. Involved in the activation of MAP kinases. Down-regulates ERK2 signaling by interfering with the phosphorylation and nuclear translocation of ERK2.,PTM:Phosphorylated on tyrosine residues upon stimulation by BFGF or NGFB.,similarity:Contains 1 IRS-type PTB domain.,subunit:Binds NTRK1 (By similarity). Binds FGFR1, NGFR, GRB2, PTPN11 and ERK2.,
<b>Background</b>	This gene encodes a substrate for the fibroblast growth factor receptor. The encoded protein is found in the peripheral plasma membrane and links fibroblast growth factor receptor stimulation to activators of Ras. The encoded protein down-regulates extracellular regulated kinase 2 through direct binding. [provided by RefSeq, Jul 2013],



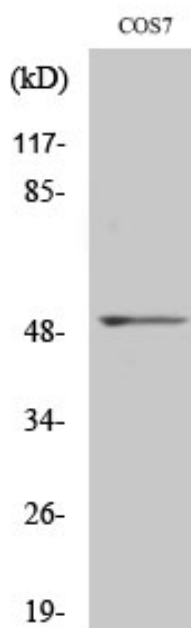
### matters needing attention

Avoid repeated freezing and thawing!

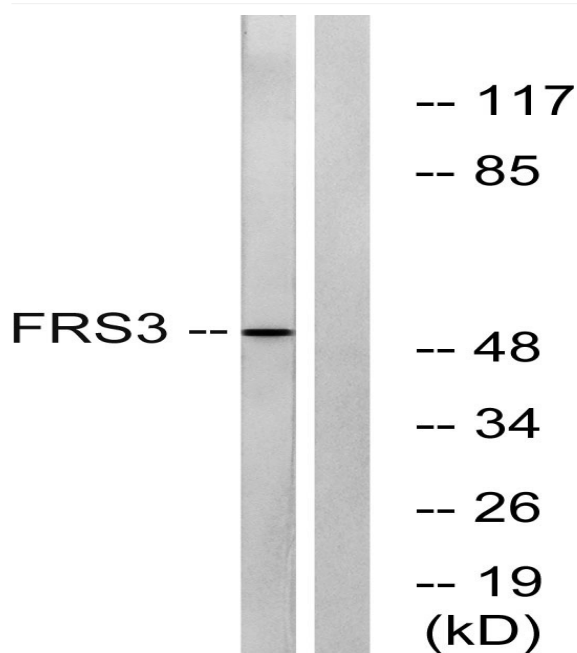
### Usage suggestions

This product can be used in immunological reaction related experiments. For more information, please consult technical personnel.

## Products Images



Western Blot analysis of various cells using FRS3 Polyclonal Antibody



Western blot analysis of lysates from COS7 cells, using FRS3 Antibody. The lane on the right is blocked with the synthesized peptide.