



Eps8L2 Polyclonal Antibody

Catalog No	YP-Ab-03857
Isotype	IgG
Reactivity	Human;Mouse
Applications	WB;IHC;IF;ELISA
Gene Name	EPS8L2
Protein Name	Epidermal growth factor receptor kinase substrate 8-like protein 2
Immunogen	The antiserum was produced against synthesized peptide derived from human ES8L2. AA range:1-50
Specificity	Eps8L2 Polyclonal Antibody detects endogenous levels of Eps8L2 protein.
Formulation	Liquid in PBS containing 50% glycerol, 0.5% BSA and 0.02% sodium azide.
Source	Polyclonal, Rabbit,IgG
Purification	The antibody was affinity-purified from rabbit antiserum by affinity-chromatography using epitope-specific immunogen.
Dilution	Western Blot: 1/500 - 1/2000. Immunohistochemistry: 1/100 - 1/300. Immunofluorescence: 1/200 - 1/1000. ELISA: 1/40000. Not yet tested in other applications.
Concentration	1 mg/ml
Purity	≥90%
Storage Stability	-20°C/1 year
Synonyms	EPS8L2; EPS8R2; PP13181; Epidermal growth factor receptor kinase substrate 8-like protein 2; EPS8-like protein 2; Epidermal growth factor receptor pathway substrate 8-related protein 2; EPS8-related protein 2
Observed Band	81kD
Cell Pathway	Cytoplasm . Cell projection, stereocilium . Localizes at the tips of the stereocilia of the inner and outer hair cells. .
Tissue Specificity	Detected in fibroblasts and placenta.
Function	function:Stimulates guanine exchange activity of SOS1. May play a role in membrane ruffling and remodeling of the actin cytoskeleton.,similarity:Belongs to the EPS8 family.,similarity:Contains 1 PID domain.,similarity:Contains 1 SH3 domain.,subunit:Interacts with ABI1. Part of a complex that contains SOS1, ABI1 and EPS8L2. Associates with F-actin.,tissue specificity:Detected in fibroblasts and placenta.,
Background	This gene encodes a member of the EPS8 gene family. The encoded protein, like other members of the family, is thought to link growth factor stimulation to actin organization, generating functional redundancy in the pathways that regulate actin cytoskeletal remodeling. [provided by RefSeq, Dec 2008],



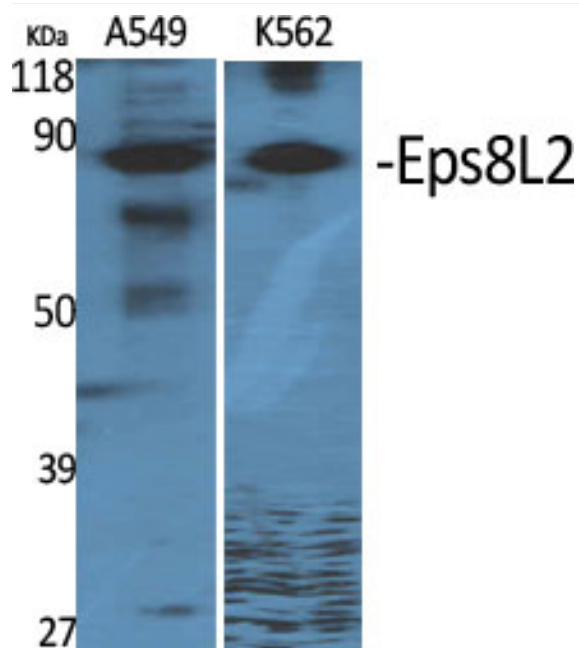
matters needing attention

Avoid repeated freezing and thawing!

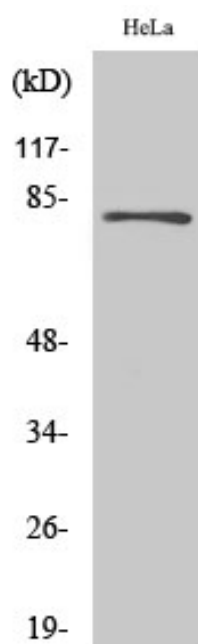
Usage suggestions

This product can be used in immunological reaction related experiments. For more information, please consult technical personnel.

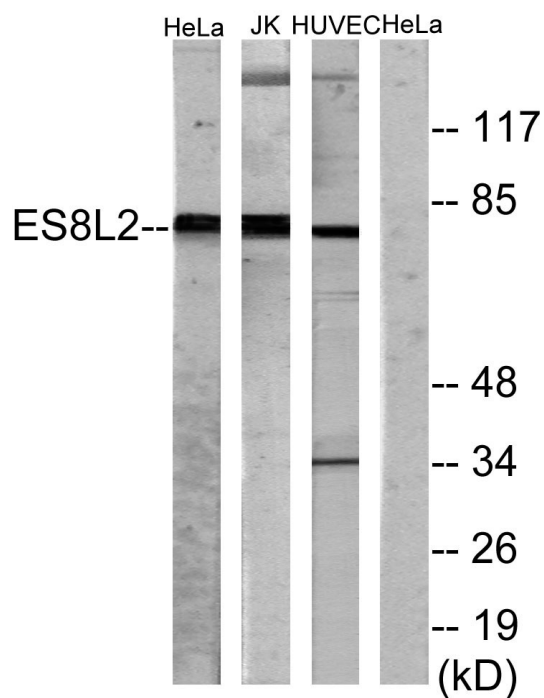
Products Images



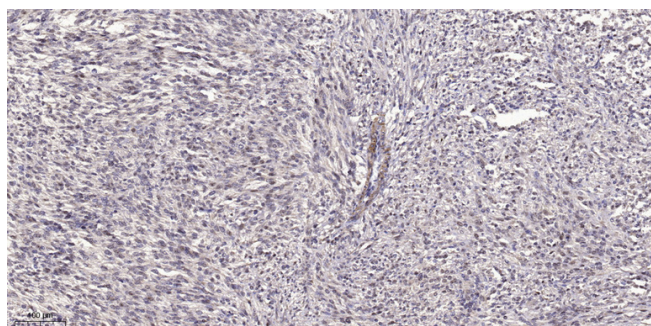
Western Blot analysis of various cells using Eps8L2 Polyclonal Antibody



Western Blot analysis of HuvEc cells using Eps8L2 Polyclonal Antibody



Western blot analysis of lysates from HeLa, Jurkat, and HUVEC cells, using ES8L2 Antibody. The lane on the right is blocked with the synthesized peptide.



Immunohistochemical analysis of paraffin-embedded human small intestinal carcinoma tissue. 1, primary Antibody was diluted at 1:200 (4° overnight). 2, Sodium citrate pH 6.0 was used for antigen retrieval (>98° C, 20min). 3, Secondary antibody was diluted at 1:200