



# DnaJB4 Polyclonal Antibody

|                           |   |
|---------------------------|---|
| <b>Catalog No</b>         | YP-Ab-03816   |
| <b>Isotype</b>            | IgG   |
| <b>Reactivity</b>         | Human;Mouse;Rat   |
| <b>Applications</b>       | WB;IHC;IF;ELISA   |
| <b>Gene Name</b>          | DNAJB4  |
| <b>Protein Name</b>       | DnaJ homolog subfamily B member 4   |
| <b>Immunogen</b>          | The antiserum was produced against synthesized peptide derived from human DNAJB4. AA range:91-140   |
| <b>Specificity</b>        | DnaJB4 Polyclonal Antibody detects endogenous levels of DnaJB4 protein.   |
| <b>Formulation</b>        | Liquid in PBS containing 50% glycerol, 0.5% BSA and 0.02% sodium azide.   |
| <b>Source</b>             | Polyclonal, Rabbit,IgG  |
| <b>Purification</b>       | The antibody was affinity-purified from rabbit antiserum by affinity-chromatography using epitope-specific immunogen.   |
| <b>Dilution</b>           | WB: 1/500 - 1/2000. IHC: 1/100 - 1/300. ELISA: 1/40000.. IF 1:50-200  |
| <b>Concentration</b>      | 1 mg/ml   |
| <b>Purity</b>             | ≥90%  |
| <b>Storage Stability</b>  | -20°C/1 year  |
| <b>Synonyms</b>           | DNAJB4; DNAJW; HLJ1; DnaJ homolog subfamily B member 4; Heat shock 40 kDa protein 1 homolog; HSP40 homolog; Heat shock protein 40 homolog; Human liver DnaJ-like protein  |
| <b>Observed Band</b>      | 38kD  |
| <b>Cell Pathway</b>       | Cytoplasm . Cell membrane . Cytoplasmic according to PubMed:18837411 and membrane-associated according to PubMed:16542645.  |
| <b>Tissue Specificity</b> | Expressed in heart, pancreas and skeletal muscle, and to a lesser extent in brain, placenta and liver.  |
| <b>Function</b>           | induction:By heat shock.,similarity:Contains 1 J domain.,   |
| <b>Background</b>         | The protein encoded by this gene is a molecular chaperone, tumor suppressor, and member of the heat shock protein-40 family. The encoded protein binds the cell adhesion protein E-cadherin and targets it to the plasma membrane. This protein also binds incorrectly folded E-cadherin and targets it for endoplasmic reticulum-associated degradation. This gene is a strong tumor suppressor for colorectal carcinoma, and downregulation of it may serve as a good biomarker for predicting patient outcomes. Several transcript variants encoding different isoforms have been found for this gene. [provided by RefSeq, Nov 2015], |



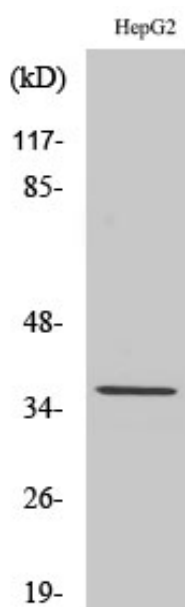
### matters needing attention

Avoid repeated freezing and thawing!

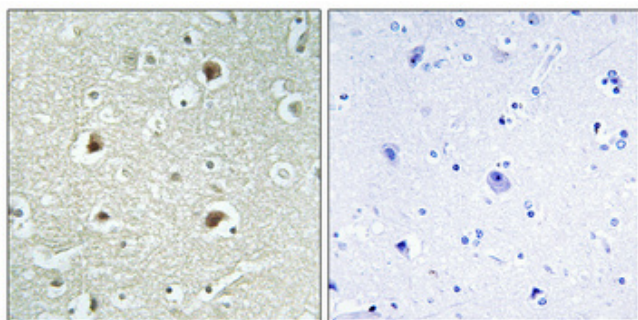
### Usage suggestions

This product can be used in immunological reaction related experiments. For more information, please consult technical personnel.

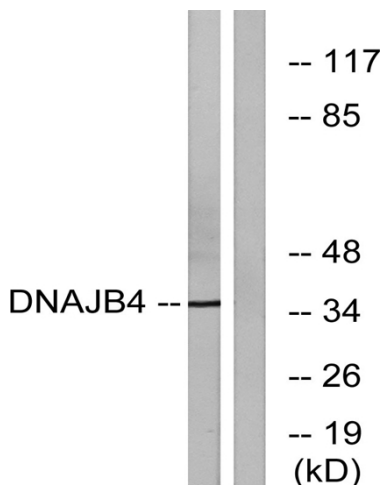
## Products Images



Western Blot analysis of various cells using DnaJB4 Polyclonal Antibody



Immunohistochemical analysis of paraffin-embedded Human brain. Antibody was diluted at 1:100 (4° overnight). High-pressure and temperature Tris-EDTA, pH 8.0 was used for antigen retrieval. Negative control (right) obtained from antibody was pre-absorbed by immunogen peptide.



Western blot analysis of lysates from HepG2 cells, using DNAJB4 Antibody. The lane on the right is blocked with the synthesized peptide.