



Cystatin 11 Polyclonal Antibody

Catalog No	YP-Ab-03801
Isotype	IgG
Reactivity	Human;Rat;Mouse;
Applications	WB;ELISA
Gene Name	CST11
Protein Name	Cystatin-11
Immunogen	The antiserum was produced against synthesized peptide derived from human CST11. AA range:81-130
Specificity	Cystatin 11 Polyclonal Antibody detects endogenous levels of Cystatin 11 protein.
Formulation	Liquid in PBS containing 50% glycerol, 0.5% BSA and 0.02% sodium azide.
Source	Polyclonal, Rabbit,IgG
Purification	The antibody was affinity-purified from rabbit antiserum by affinity-chromatography using epitope-specific immunogen.
Dilution	Western Blot: 1/500 - 1/2000. ELISA: 1/40000. Not yet tested in other applications.
Concentration	1 mg/ml
Purity	≥90%
Storage Stability	-20°C/1 year
Synonyms	CST11; CST8L; Cystatin-11
Observed Band	17kD
Cell Pathway	Secreted . Probably secreted into the epididymis lumen, where it localizes to the outer surface of sperm. Specifically localizes to the postacrosomal and tail regions of sperm. .
Tissue Specificity	Detected in the epithelium and lumen of the epididymis, and in sperm (at protein level).
Function	function:Has antibacterial activity against the Gram-negative bacteria E.coli. May play a role in sperm maturation and fertilization.,similarity:Belongs to the cystatin family.,subcellular location:Nuclear and cytoplasmic in the epididymis. Localized to the postacrosomal and tail regions of sperm. Probably localized to the outer surface of sperm.,tissue specificity:Detected in the epithelium and lumen of the epididymis, and in sperm (at protein level).,
Background	The cystatin superfamily encompasses proteins that contain multiple cystatin-like sequences. Some of the members are active cysteine protease inhibitors, while others have lost or perhaps never acquired this inhibitory activity. There are three inhibitory families in the superfamily, including the type 1 cystatins (stefins), type 2 cystatins and the kininogens. The type 2 cystatin proteins are a class of cysteine proteinase inhibitors found in a variety of human fluids and secretions. The cystatin locus on chromosome 20 contains the majority of the type 2 cystatin



genes and pseudogenes. This gene is located in the cystatin locus and encodes an epididymal-specific protein shown to have antimicrobial activity against E. coli. Alternative splicing yields two variants encoding distinct isoforms. [provided by RefSeq, Sep 2014],

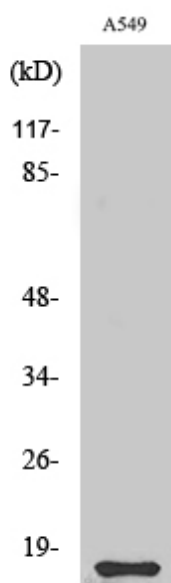
matters needing attention

Avoid repeated freezing and thawing!

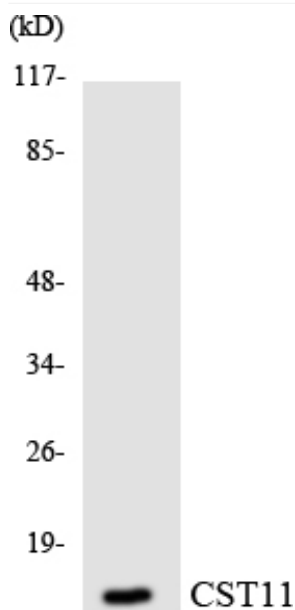
Usage suggestions

This product can be used in immunological reaction related experiments. For more information, please consult technical personnel.

Products Images



Western Blot analysis of various cells using Cystatin 11 Polyclonal Antibody



Western blot analysis of the lysates from Jurkat cells using CST11 antibody.