



# CPZ Polyclonal Antibody

<b>Catalog No</b>	YP-Ab-03792
<b>Isotype</b>	IgG
<b>Reactivity</b>	Human;Rat
<b>Applications</b>	WB;ELISA
<b>Gene Name</b>	CPZ
<b>Protein Name</b>	Carboxypeptidase Z
<b>Immunogen</b>	Synthesized peptide derived from CPZ . at AA range: 330-410
<b>Specificity</b>	CPZ Polyclonal Antibody detects endogenous levels of CPZ protein.
<b>Formulation</b>	Liquid in PBS containing 50% glycerol, 0.5% BSA and 0.02% sodium azide.
<b>Source</b>	Polyclonal, Rabbit,IgG
<b>Purification</b>	The antibody was affinity-purified from rabbit antiserum by affinity-chromatography using epitope-specific immunogen.
<b>Dilution</b>	Western Blot: 1/500 - 1/2000. ELISA: 1/40000. Not yet tested in other applications.
<b>Concentration</b>	1 mg/ml
<b>Purity</b>	≥90%
<b>Storage Stability</b>	-20°C/1 year
<b>Synonyms</b>	CPZ; Carboxypeptidase Z; CPZ
<b>Observed Band</b>	73kD
<b>Cell Pathway</b>	Secreted, extracellular space, extracellular matrix .
<b>Tissue Specificity</b>	In placenta, it is present within invasive trophoblasts and in the surrounding extracellular space. Also present in amnion cells, but is not readily apparent in the extracellular matrix of this cell type. Present in normal pituitary gland and neoplastic pituitary gland (especially POMC-, GH- and PRL-producing adenomas) (at protein level). Widely expressed.
<b>Function</b>	cofactor: Binds 1 zinc ion per subunit.,enzyme regulation: Inhibited by 2-mercaptomethyl-3-guanidinoethylthiopropionic acid (MGTA) and guanidinoethylmercaptosuccinic acid (GEMSA). Inhibited by chelating agents such as EDTA and EGTA.,function: Cleaves substrates with C-terminal arginine residues. Probably modulates the Wnt signaling pathway, by cleaving some undefined protein. May play a role in cleavage during prohormone processing.,similarity: Belongs to the peptidase M14 family.,similarity: Contains 1 FZ (frizzled) domain.,tissue specificity: In placenta, it is present within invasive trophoblasts and in the surrounding extracellular space. Also present in amnion cells, but is not readily apparent in the extracellular matrix of this cell type. Present in normal pituitary gland and neoplastic pituitary gland (especially POMC-, GH- and PRL-producing adenomas) (at protein level). Widely express



## Background

carboxypeptidase Z(CPZ) Homo sapiens This gene encodes a member of the metallo-carboxypeptidase family. This enzyme displays carboxypeptidase activity towards substrates with basic C-terminal residues. It is most active at neutral pH and is inhibited by active site-directed inhibitors of metallo-carboxypeptidases. Alternative splicing in the coding region results in multiple transcript variants encoding different isoforms. [provided by RefSeq, Jul 2008],

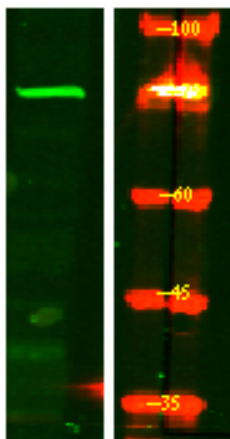
## matters needing attention

Avoid repeated freezing and thawing!

## Usage suggestions

This product can be used in immunological reaction related experiments. For more information, please consult technical personnel.

## Products Images



Western Blot analysis of HEK293 lysis, using primary antibody at 1:1000 dilution. Secondary antibody(catalog#:RS23920) was diluted at 1:10000