



# CPE Polyclonal Antibody

<b>Catalog No</b>	YP-Ab-03785
<b>Isotype</b>	IgG
<b>Reactivity</b>	Human;Mouse;Rat
<b>Applications</b>	WB;ELISA
<b>Gene Name</b>	CPE
<b>Protein Name</b>	Carboxypeptidase E
<b>Immunogen</b>	The antiserum was produced against synthesized peptide derived from human CPE. AA range:271-320
<b>Specificity</b>	CPE Polyclonal Antibody detects endogenous levels of CPE protein.
<b>Formulation</b>	Liquid in PBS containing 50% glycerol, 0.5% BSA and 0.02% sodium azide.
<b>Source</b>	Polyclonal, Rabbit,IgG
<b>Purification</b>	The antibody was affinity-purified from rabbit antiserum by affinity-chromatography using epitope-specific immunogen.
<b>Dilution</b>	Western Blot: 1/500 - 1/2000. ELISA: 1/10000. Not yet tested in other applications.
<b>Concentration</b>	1 mg/ml
<b>Purity</b>	≥90%
<b>Storage Stability</b>	-20°C/1 year
<b>Synonyms</b>	CPE; Carboxypeptidase E; CPE; Carboxypeptidase H; CPH; Enkephalin convertase; Prohormone-processing carboxypeptidase
<b>Observed Band</b>	53kD
<b>Cell Pathway</b>	[Isoform 1]: Cytoplasmic vesicle, secretory vesicle . Cytoplasmic vesicle, secretory vesicle membrane ; Peripheral membrane protein . Secreted . Associated with the secretory granule membrane through direct binding to lipid rafts in intragranular conditions. .
<b>Tissue Specificity</b>	Brain,Colon,Eye,
<b>Function</b>	catalytic activity:Release of C-terminal arginine or lysine residues from polypeptides.,cofactor:Binds 1 zinc ion per subunit.,function:Removes residual C-terminal Arg or Lys remaining after initial endoprotease cleavage during prohormone processing. Processes proinsulin.,similarity:Belongs to the peptidase M14 family.,subcellular location:Secretory granules of pancreatic islets, adrenal gland, pituitary and brain.,
<b>Background</b>	carboxypeptidase E(CPE) Homo sapiens This gene encodes a member of the M14 family of metallocarboxypeptidases. The encoded preproprotein is proteolytically processed to generate the mature peptidase. This peripheral membrane protein cleaves C-terminal amino acid residues and is involved in the biosynthesis of peptide hormones and neurotransmitters, including insulin. This



protein may also function independently of its peptidase activity, as a neurotrophic factor that promotes neuronal survival, and as a sorting receptor that binds to regulated secretory pathway proteins, including prohormones. Mutations in this gene are implicated in type 2 diabetes. [provided by RefSeq, Nov 2015],

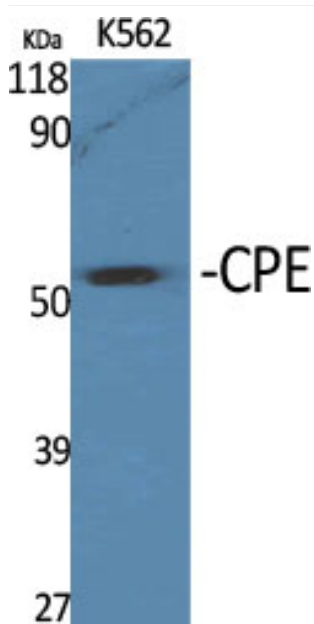
#### matters needing attention

Avoid repeated freezing and thawing!

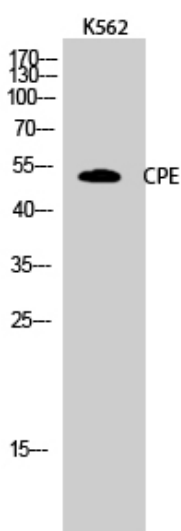
#### Usage suggestions

This product can be used in immunological reaction related experiments. For more information, please consult technical personnel.

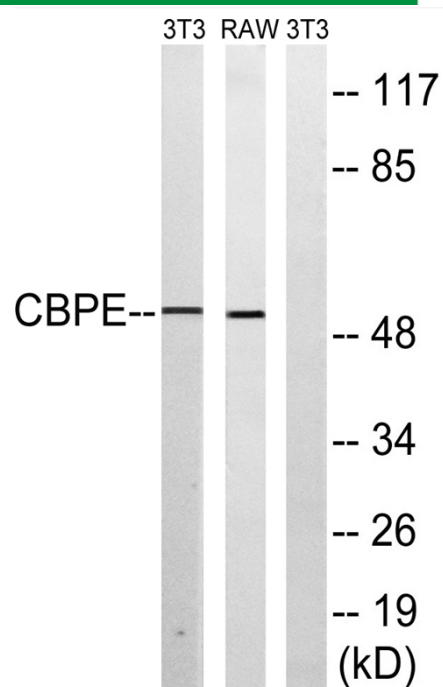
### Products Images



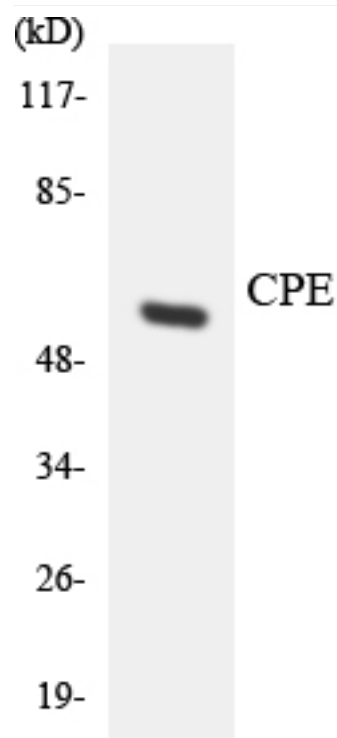
Western Blot analysis of various cells using CPE Polyclonal Antibody



Western Blot analysis of K562 cells using CPE Polyclonal Antibody



Western blot analysis of lysates from RAW264.7 and NIH/3T3 cells, using CPE Antibody. The lane on the right is blocked with the synthesized peptide.



Western blot analysis of the lysates from HeLa cells using CPE antibody.