



CPA5 Polyclonal Antibody

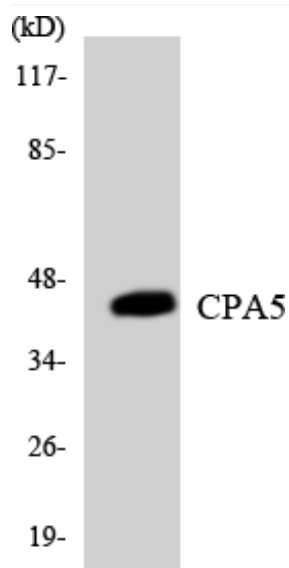
Catalog No	YP-Ab-03784
Isotype	IgG
Reactivity	Human;Mouse
Applications	WB;ELISA
Gene Name	CPA5
Protein Name	Carboxypeptidase A5
Immunogen	The antiserum was produced against synthesized peptide derived from human CPA5. AA range:91-140
Specificity	CPA5 Polyclonal Antibody detects endogenous levels of CPA5 protein.
Formulation	Liquid in PBS containing 50% glycerol, 0.5% BSA and 0.02% sodium azide.
Source	Polyclonal, Rabbit,IgG
Purification	The antibody was affinity-purified from rabbit antiserum by affinity-chromatography using epitope-specific immunogen.
Dilution	Western Blot: 1/500 - 1/2000. ELISA: 1/20000. Not yet tested in other applications.
Concentration	1 mg/ml
Purity	≥90%
Storage Stability	-20°C/1 year
Synonyms	CPA5; Carboxypeptidase A5
Observed Band	50kD
Cell Pathway	Secreted .
Tissue Specificity	Expression is very low or not detectable.
Function	catalytic activity:Release of a C-terminal amino acid, but little or no action with -Asp, -Glu, -Arg, -Lys or -Pro.,cofactor:Binds 1 zinc ion per subunit.,similarity:Belongs to the peptidase M14 family.,tissue specificity:Expression is very low or not detectable.,
Background	Carboxypeptidases have functions ranging from digestion of food to selective biosynthesis of neuroendocrine peptides. Members of the A/B subfamily of carboxypeptidases, such as CPA5, contain an approximately 90-amino acid pro region that assists in the folding of the active carboxypeptidase domain. Cleavage of the pro region activates the enzyme (Wei et al., 2002 [PubMed 11836249]).[supplied by OMIM, Mar 2008],
matters needing attention	Avoid repeated freezing and thawing!

**Usage suggestions**

This product can be used in immunological reaction related experiments. For more information, please consult technical personnel.

Products Images

Western Blot analysis of various cells using CPA5 Polyclonal Antibody



Western blot analysis of the lysates from COLO205 cells using CPA5 antibody.