



# CLN6 Polyclonal Antibody

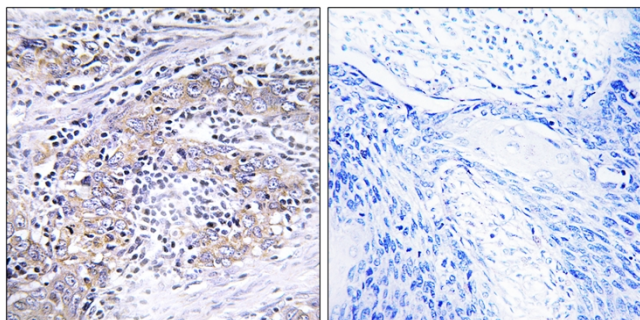
<b>Catalog No</b>	YP-Ab-03777
<b>Isotype</b>	IgG
<b>Reactivity</b>	Human;Rat;Mouse;
<b>Applications</b>	WB;IHC;IF;ELISA
<b>Gene Name</b>	CLN6
<b>Protein Name</b>	Ceroid-lipofuscinosis neuronal protein 6
<b>Immunogen</b>	The antiserum was produced against synthesized peptide derived from human CLN6. AA range:221-270
<b>Specificity</b>	CLN6 Polyclonal Antibody detects endogenous levels of CLN6 protein.
<b>Formulation</b>	Liquid in PBS containing 50% glycerol, 0.5% BSA and 0.02% sodium azide.
<b>Source</b>	Polyclonal, Rabbit,IgG
<b>Purification</b>	The antibody was affinity-purified from rabbit antiserum by affinity-chromatography using epitope-specific immunogen.
<b>Dilution</b>	WB: 1/500 - 1/2000. IHC: 1/100 - 1/300. ELISA: 1/40000.. IF 1:50-200
<b>Concentration</b>	1 mg/ml
<b>Purity</b>	≥90%
<b>Storage Stability</b>	-20°C/1 year
<b>Synonyms</b>	CLN6; Ceroid-lipofuscinosis neuronal protein 6; Protein CLN6
<b>Observed Band</b>	40kD
<b>Cell Pathway</b>	Endoplasmic reticulum membrane ; Multi-pass membrane protein . Endoplasmic reticulum .
<b>Tissue Specificity</b>	Epithelium,Lung,Urinary bladder,
<b>Function</b>	disease:Defects in CLN6 are the cause of variant late-onset infantile neuronal ceroid lipofuscinosis (vLINCL) [MIM:601780] ,online information:Neural Ceroid Lipofuscinoses mutation db,
<b>Background</b>	This gene is one of eight which have been associated with neuronal ceroid lipofuscinoses (NCL). Also referred to as Batten disease, NCL comprises a class of autosomal recessive, neurodegenerative disorders affecting children. The genes responsible likely encode proteins involved in the degradation of post-translationally modified proteins in lysosomes. The primary defect in NCL disorders is thought to be associated with lysosomal storage function. [provided by RefSeq, Oct 2008],
<b>matters needing attention</b>	Avoid repeated freezing and thawing!



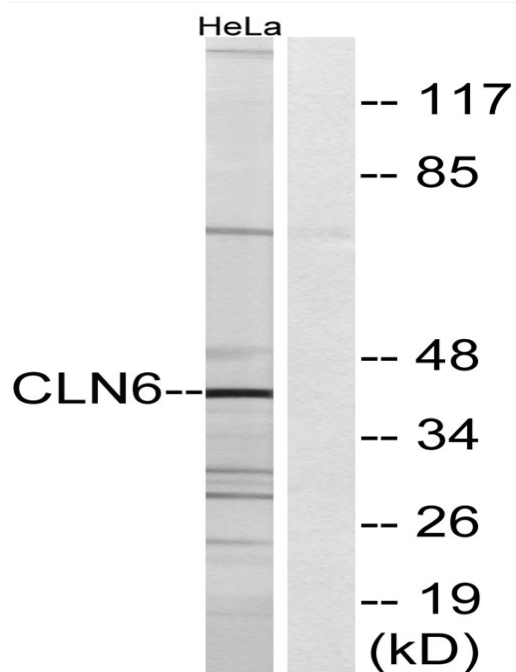
## Usage suggestions

This product can be used in immunological reaction related experiments. For more information, please consult technical personnel.

## Products Images



Immunohistochemistry analysis of paraffin-embedded human cervix carcinoma tissue, using CLN6 Antibody. The picture on the right is blocked with the synthesized peptide.



Western blot analysis of lysates from HeLa cells, using CLN6 Antibody. The lane on the right is blocked with the synthesized peptide.