



CEP78 Polyclonal Antibody

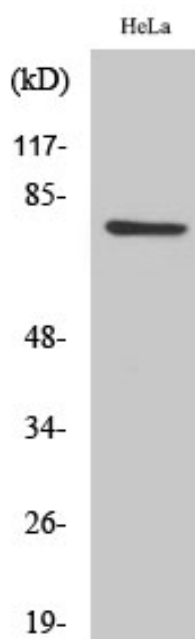
Catalog No	YP-Ab-03766
Isotype	IgG
Reactivity	Human;Mouse
Applications	WB;IHC;IF;ELISA
Gene Name	CEP78
Protein Name	Centrosomal protein of 78 kDa
Immunogen	The antiserum was produced against synthesized peptide derived from human CEP78. AA range:301-350
Specificity	CEP78 Polyclonal Antibody detects endogenous levels of CEP78 protein.
Formulation	Liquid in PBS containing 50% glycerol, 0.5% BSA and 0.02% sodium azide.
Source	Polyclonal, Rabbit,IgG
Purification	The antibody was affinity-purified from rabbit antiserum by affinity-chromatography using epitope-specific immunogen.
Dilution	WB: 1/500 - 1/2000. IHC: 1/100 - 1/300. ELISA: 1/20000.. IF 1:50-200
Concentration	1 mg/ml
Purity	≥90%
Storage Stability	-20°C/1 year
Synonyms	CEP78; C9orf81; Centrosomal protein of 78 kDa; Cep78
Observed Band	80kD
Cell Pathway	Cytoplasm, cytoskeleton, microtubule organizing center, centrosome . Cytoplasm, cytoskeleton, microtubule organizing center, centrosome, centriole . Cytoplasm, cytoskeleton, cilium basal body . Mainly localizes at the centriolar wall, but also found in the pericentriolar material (PubMed:27246242). Expressed in photoreceptor inner segment (PubMed:27588452). .
Tissue Specificity	Widely expressed (PubMed:27588451, PubMed:27588452). Expressed in different retinal cell types with higher expression in cone compared to rod cells (at protein level) (PubMed:27588452).
Function	similarity:Belongs to the CEP78 family.,similarity:Contains 3 LRR (leucine-rich) repeats.,
Background	similarity:Belongs to the CEP78 family.,similarity:Contains 3 LRR (leucine-rich) repeats.,
matters needing attention	Avoid repeated freezing and thawing!



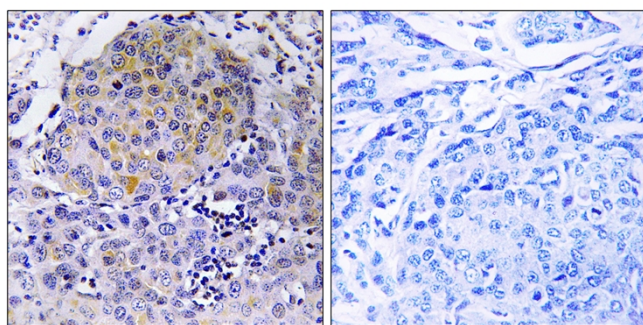
Usage suggestions

This product can be used in immunological reaction related experiments. For more information, please consult technical personnel.

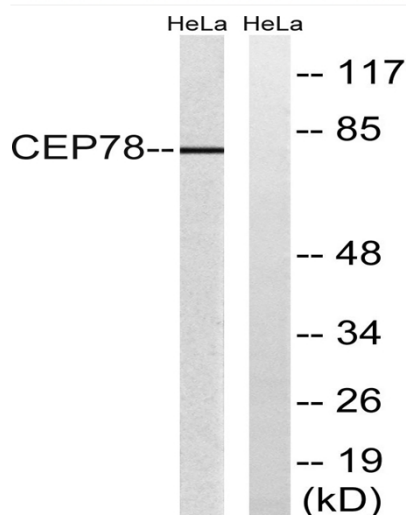
Products Images



Western Blot analysis of various cells using CEP78 Polyclonal Antibody



Immunohistochemistry analysis of paraffin-embedded human breast carcinoma tissue, using CEP78 Antibody. The picture on the right is blocked with the synthesized peptide.



Western blot analysis of lysates from HeLa cells, using CEP78 Antibody. The lane on the right is blocked with the synthesized peptide.