

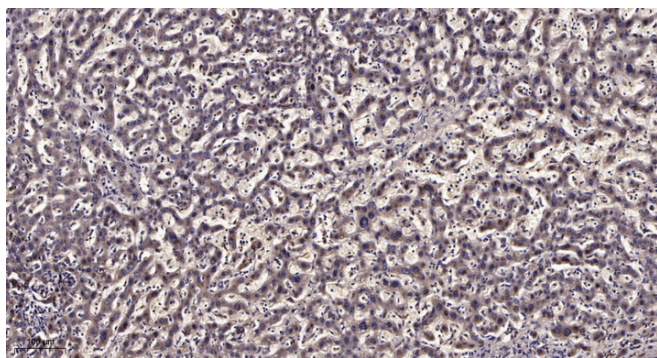


CEP41 Polyclonal Antibody

Catalog No	YP-Ab-03761
Isotype	IgG
Reactivity	Human;Rat;Mouse;
Applications	IHC;IF;ELISA
Gene Name	CEP41
Protein Name	Centrosomal protein of 41 kDa
Immunogen	The antiserum was produced against synthesized peptide derived from human CEP41. AA range:150-200
Specificity	CEP41 Polyclonal Antibody detects endogenous levels of CEP41 protein.
Formulation	Liquid in PBS containing 50% glycerol, 0.5% BSA and 0.02% sodium azide.
Source	Polyclonal, Rabbit,IgG
Purification	The antibody was affinity-purified from rabbit antiserum by affinity-chromatography using epitope-specific immunogen.
Dilution	IHC: 1/100 - 1/300. ELISA: 1/40000.. IF 1:50-200
Concentration	1 mg/ml
Purity	≥90%
Storage Stability	-20°C/1 year
Synonyms	CEP41; TSGA14; Centrosomal protein of 41 kDa; Cep41; Testis-specific gene A14 protein
Observed Band	41kD
Cell Pathway	Cytoplasm, cytoskeleton, microtubule organizing center, centrosome . Cell projection, cilium. Cytoplasm, cytoskeleton, cilium basal body. Localizes mainly to the cilium basal body and in primary cilia.
Tissue Specificity	[Isoform 1]: Expressed in testis and fetal tissues. ; [Isoform 3]: Expressed in testis and fetal tissues.
Function	similarity:Contains 1 rhodanese domain.,tissue specificity:Isoform 1 and isoform 4 are expressed in testis and fetal tissues.,
Background	This gene encodes a centrosomal and microtubule-binding protein which is predicted to have two coiled-coil domains and a rhodanese domain. In human retinal pigment epithelial cells the protein localized to centrioles and cilia. Mutations in this gene have been associated with Joubert Syndrome 15; an autosomal recessive ciliopathy and neurological disorder. Alternative splicing results in multiple transcript variants. [provided by RefSeq, Mar 2012],
matters needing attention	Avoid repeated freezing and thawing!

**Usage suggestions**

This product can be used in immunological reaction related experiments. For more information, please consult technical personnel.

Products Images

Immunohistochemical analysis of paraffin-embedded human liver cancer. 1, Antibody was diluted at 1:200(4° overnight). 2, Tris-EDTA,pH9.0 was used for antigen retrieval. 3,Secondary antibody was diluted at 1:200(room temperature, 45min).