



Cdc42EP3 Polyclonal Antibody

Catalog No	YP-Ab-03752
Isotype	IgG
Reactivity	Human;Mouse;Rat
Applications	WB;ELISA
Gene Name	CDC42EP3
Protein Name	Cdc42 effector protein 3
Immunogen	Synthesized peptide derived from the N-terminal region of human Cdc42EP3.
Specificity	Cdc42EP3 Polyclonal Antibody detects endogenous levels of Cdc42EP3 protein.
Formulation	Liquid in PBS containing 50% glycerol, 0.5% BSA and 0.02% sodium azide.
Source	Polyclonal, Rabbit,IgG
Purification	The antibody was affinity-purified from rabbit antiserum by affinity-chromatography using epitope-specific immunogen.
Dilution	Western Blot: 1/500 - 1/2000. ELISA: 1/40000. Not yet tested in other applications.
Concentration	1 mg/ml
Purity	≥90%
Storage Stability	-20°C/1 year
Synonyms	CDC42EP3; BORG2; CEP3; Cdc42 effector protein 3; Binder of Rho GTPases 2; MSE55-related Cdc42-binding protein
Observed Band	26kD
Cell Pathway	Endomembrane system ; Peripheral membrane protein . Cytoplasm, cytoskeleton
Tissue Specificity	Highly expressed in the heart and weakly in the brain.
Function	function:Probably involved in the organization of the actin cytoskeleton. May act downstream of CDC42 to induce actin filament assembly leading to cell shape changes. Induces pseudopodia formation in fibroblasts.,similarity:Belongs to the BORG/CEP family.,similarity:Contains 1 CRIB domain.,subunit:Interacts with RHOQ and CDC42, in a GTP-dependent manner, and with SEPT7.,tissue specificity:Highly expressed in the heart and weakly in the brain.,
Background	This gene encodes a member of a small family of guanosine triphosphate (GTP) metabolizing proteins that contain a CRIB (Cdc42, Rac interactive binding) domain. Members of this family of proteins act as effectors of CDC42 function. The encoded protein is involved in actin cytoskeleton re-organization during cell shape changes, including pseudopodia formation. A pseudogene of this gene is found on chromosome 19. Alternative splicing results in multiple transcript variants. [provided by RefSeq, Jul 2012],

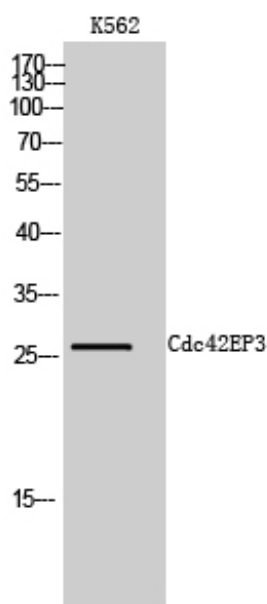
**matters needing attention**

Avoid repeated freezing and thawing!

Usage suggestions

This product can be used in immunological reaction related experiments. For more information, please consult technical personnel.

Products Images



Western Blot analysis of K562 cells using Cdc42EP3 Polyclonal Antibody