

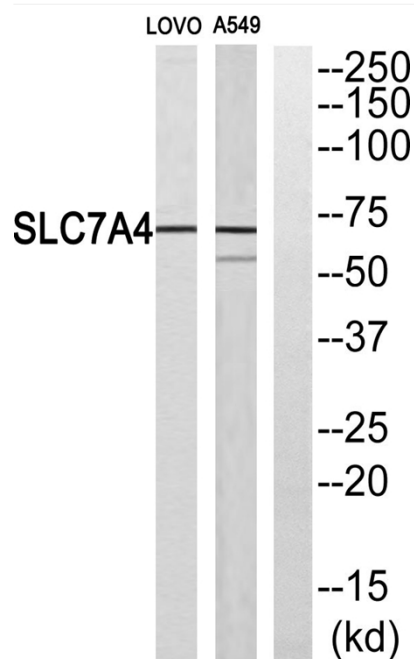


# CAT-4 Polyclonal Antibody

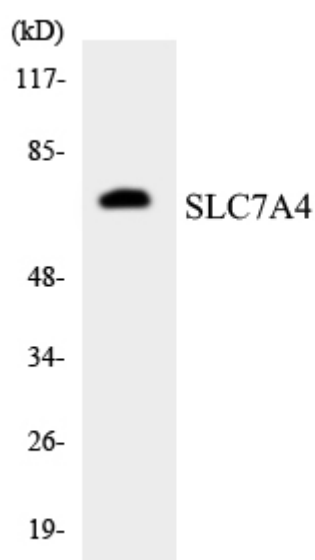
<b>Catalog No</b>	YP-Ab-03744
<b>Isotype</b>	IgG
<b>Reactivity</b>	Human;Rat;Mouse;
<b>Applications</b>	WB;ELISA
<b>Gene Name</b>	SLC7A4
<b>Protein Name</b>	Cationic amino acid transporter 4
<b>Immunogen</b>	The antiserum was produced against synthesized peptide derived from human SLC7A4. AA range:561-610
<b>Specificity</b>	CAT-4 Polyclonal Antibody detects endogenous levels of CAT-4 protein.
<b>Formulation</b>	Liquid in PBS containing 50% glycerol, 0.5% BSA and 0.02% sodium azide.
<b>Source</b>	Polyclonal, Rabbit,IgG
<b>Purification</b>	The antibody was affinity-purified from rabbit antiserum by affinity-chromatography using epitope-specific immunogen.
<b>Dilution</b>	Western Blot: 1/500 - 1/2000. ELISA: 1/10000. Not yet tested in other applications.
<b>Concentration</b>	1 mg/ml
<b>Purity</b>	≥90%
<b>Storage Stability</b>	-20°C/1 year
<b>Synonyms</b>	SLC7A4; Cationic amino acid transporter 4; CAT-4; CAT4; Solute carrier family 7 member 4
<b>Observed Band</b>	70kD
<b>Cell Pathway</b>	Membrane ; Multi-pass membrane protein .
<b>Tissue Specificity</b>	Brain,Placenta,
<b>Function</b>	function:Involved in the transport of the cationic amino acids (arginine, lysine and ornithine),similarity:Belongs to the amino acid-polyamine-organocation (APC) superfamily. Cationic amino acid transporter (CAT) (TC 2.A.3.3) family.,
<b>Background</b>	function:Involved in the transport of the cationic amino acids (arginine, lysine and ornithine),similarity:Belongs to the amino acid-polyamine-organocation (APC) superfamily. Cationic amino acid transporter (CAT) (TC 2.A.3.3) family.,
<b>matters needing attention</b>	Avoid repeated freezing and thawing!
<b>Usage suggestions</b>	This product can be used in immunological reaction related experiments. For more information, please consult technical personnel.



## Products Images



Western blot analysis of SLC7A4 Antibody. The lane on the right is blocked with the SLC7A4 peptide.



Western blot analysis of the lysates from K562 cells using SLC7A4 antibody.