

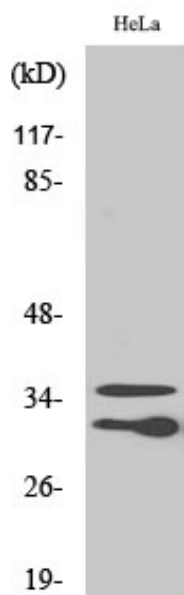


# C1qL2 Polyclonal Antibody

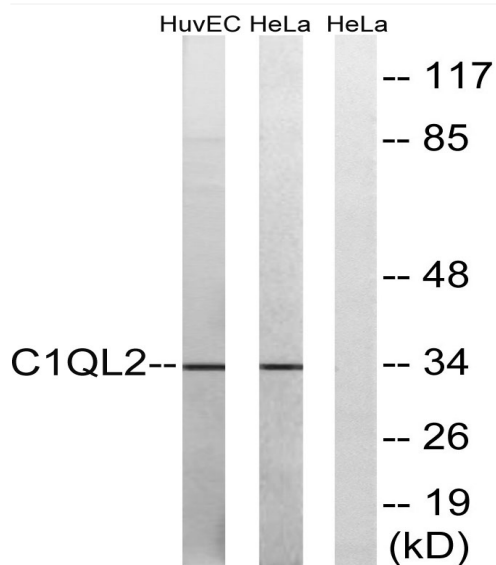
<b>Catalog No</b>	YP-Ab-03742
<b>Isotype</b>	IgG
<b>Reactivity</b>	Human;Mouse
<b>Applications</b>	WB;IHC;IF;ELISA
<b>Gene Name</b>	C1QL2
<b>Protein Name</b>	Complement C1q-like protein 2
<b>Immunogen</b>	The antiserum was produced against synthesized peptide derived from human C1QL2. AA range:231-280
<b>Specificity</b>	C1qL2 Polyclonal Antibody detects endogenous levels of C1qL2 protein.
<b>Formulation</b>	Liquid in PBS containing 50% glycerol, 0.5% BSA and 0.02% sodium azide.
<b>Source</b>	Polyclonal, Rabbit,IgG
<b>Purification</b>	The antibody was affinity-purified from rabbit antiserum by affinity-chromatography using epitope-specific immunogen.
<b>Dilution</b>	WB: 1/500 - 1/2000. IHC: 1/100 - 1/300. ELISA: 1/10000.. IF 1:50-200
<b>Concentration</b>	1 mg/ml
<b>Purity</b>	≥90%
<b>Storage Stability</b>	-20°C/1 year
<b>Synonyms</b>	C1QL2; Complement C1q-like protein 2
<b>Observed Band</b>	32-36kD
<b>Cell Pathway</b>	Secreted .
<b>Tissue Specificity</b>	
<b>Function</b>	similarity:Contains 1 C1q domain.,similarity:Contains 1 collagen-like domain.,
<b>Background</b>	similarity:Contains 1 C1q domain.,similarity:Contains 1 collagen-like domain.,
<b>matters needing attention</b>	Avoid repeated freezing and thawing!
<b>Usage suggestions</b>	This product can be used in immunological reaction related experiments. For more information, please consult technical personnel.



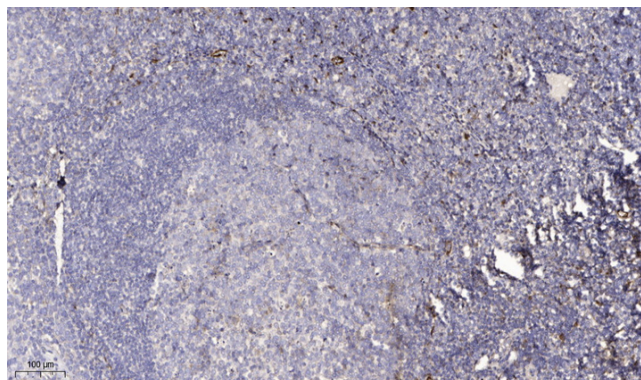
## Products Images



Western Blot analysis of various cells using C1qL2 Polyclonal Antibody



Western blot analysis of lysates from HeLa and HUVEC cells, using C1QL2 Antibody. The lane on the right is blocked with the synthesized peptide.



Immunohistochemical analysis of paraffin-embedded human tonsil. 1, Antibody was diluted at 1:200(4° overnight). 2, Tris-EDTA,pH9.0 was used for antigen retrieval. 3,Secondary antibody was diluted at 1:200(room temperature, 30min).