

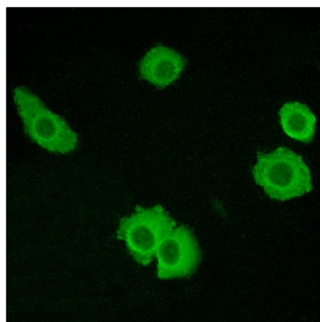


# BAI-3 Polyclonal Antibody

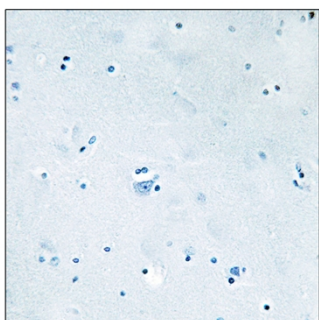
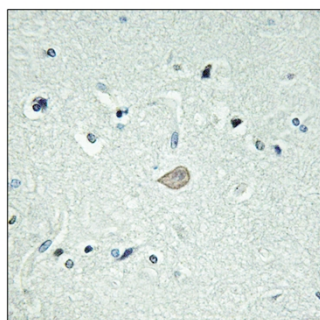
<b>Catalog No</b>	YP-Ab-03738
<b>Isotype</b>	IgG
<b>Reactivity</b>	Human;Mouse
<b>Applications</b>	IHC;IF;ELISA
<b>Gene Name</b>	BAI3
<b>Protein Name</b>	Brain-specific angiogenesis inhibitor 3
<b>Immunogen</b>	The antiserum was produced against synthesized peptide derived from human BAI3. AA range:211-260
<b>Specificity</b>	BAI-3 Polyclonal Antibody detects endogenous levels of BAI-3 protein.
<b>Formulation</b>	Liquid in PBS containing 50% glycerol, 0.5% BSA and 0.02% sodium azide.
<b>Source</b>	Polyclonal, Rabbit,IgG
<b>Purification</b>	The antibody was affinity-purified from rabbit antiserum by affinity-chromatography using epitope-specific immunogen.
<b>Dilution</b>	Immunohistochemistry: 1/100 - 1/300. Immunofluorescence: 1/200 - 1/1000. ELISA: 1/10000. Not yet tested in other applications.
<b>Concentration</b>	1 mg/ml
<b>Purity</b>	≥90%
<b>Storage Stability</b>	-20°C/1 year
<b>Synonyms</b>	BAI3; KIAA0550; Brain-specific angiogenesis inhibitor 3
<b>Observed Band</b>	
<b>Cell Pathway</b>	Cell membrane ; Multi-pass membrane protein .
<b>Tissue Specificity</b>	Strongly expressed in brain. Also detected in heart. Reduced expression in some glioblastoma cell lines.
<b>Function</b>	function:Might be involved in angiogenesis inhibition and suppression of glioblastoma.,similarity:Belongs to the G-protein coupled receptor 2 family, LN-TM7 subfamily.,similarity:Contains 1 CUB domain.,similarity:Contains 1 GPS domain.,similarity:Contains 4 TSP type-1 domains.,tissue specificity:Strongly expressed in brain. Also detected in heart. Reduced expression is observed in some glioblastoma cell lines.,
<b>Background</b>	This p53-target gene encodes a brain-specific angiogenesis inhibitor, a seven-span transmembrane protein, and is thought to be a member of the secretin receptor family. Brain-specific angiogenesis proteins BAI2 and BAI3 are similar to BAI1 in structure, have similar tissue specificities, and may also play a role in angiogenesis. [provided by RefSeq, Jul 2008],
<b>matters needing attention</b>	Avoid repeated freezing and thawing!

**Usage suggestions**

This product can be used in immunological reaction related experiments. For more information, please consult technical personnel.

**Products Images**

Immunofluorescence analysis of HUVEC cells, using BAI3 Antibody. The picture on the right is blocked with the synthesized peptide.



Immunohistochemistry analysis of paraffin-embedded human brain tissue, using BAI3 Antibody. The picture on the right is blocked with the synthesized peptide.