



# Ataxin-2L Polyclonal Antibody

<b>Catalog No</b>	YP-Ab-03734
<b>Isotype</b>	IgG
<b>Reactivity</b>	Human;Rat;Mouse;
<b>Applications</b>	WB;ELISA
<b>Gene Name</b>	ATXN2L
<b>Protein Name</b>	Ataxin-2-like protein
<b>Immunogen</b>	The antiserum was produced against synthesized peptide derived from human ATXN2L. AA range:571-620
<b>Specificity</b>	Ataxin-2L Polyclonal Antibody detects endogenous levels of Ataxin-2L protein.
<b>Formulation</b>	Liquid in PBS containing 50% glycerol, 0.5% BSA and 0.02% sodium azide.
<b>Source</b>	Polyclonal, Rabbit,IgG
<b>Purification</b>	The antibody was affinity-purified from rabbit antiserum by affinity-chromatography using epitope-specific immunogen.
<b>Dilution</b>	Western Blot: 1/500 - 1/2000. ELISA: 1/20000. Not yet tested in other applications.
<b>Concentration</b>	1 mg/ml
<b>Purity</b>	≥90%
<b>Storage Stability</b>	-20°C/1 year
<b>Synonyms</b>	ATXN2L; A2D; A2LG; A2LP; A2RP; Ataxin-2-like protein; Ataxin-2 domain protein; Ataxin-2-related protein
<b>Observed Band</b>	113kD
<b>Cell Pathway</b>	Membrane ; Peripheral membrane protein . Cytoplasm . Nucleus speckle . Cytoplasmic granule . Predominantly cytoplasmic but is also detected in nuclear speckles (PubMed:23209657). Component of cytoplasmic stress granules (PubMed:23209657). Inhibition of methylation alters nuclear localization (PubMed:25748791). Methylation does not seem to be required for localization to stress granules under stress conditions (PubMed:25748791). .
<b>Tissue Specificity</b>	Expressed at high levels in thymus, lymph node, spleen, fetal kidney and adult testis. Constitutively associated with MPL and EPOR in hematopoietic cells.
<b>Function</b>	PTM:Arg-361 is dimethylated, probably to asymmetric dimethylarginine.,PTM:Thrombopoietin triggers the phosphorylation on tyrosine residues in a way that is dependent on MPL C-terminal domain.,sequence caution:Exon duplication.,similarity:Belongs to the ataxin-2 family.,subunit:Interacts with MPL/TPOR and EPOR and dissociates after ligand stimulation.,tissue specificity:Expressed at high levels in thymus, lymph node, spleen, fetal kidney and adult testis. Constitutively associated with MPL and EPOR in hematopoietic cells.,



## Background

This gene encodes an ataxin type 2 related protein of unknown function. This protein is a member of the spinocerebellar ataxia (SCAs) family, which is associated with a complex group of neurodegenerative disorders. Several alternatively spliced transcripts encoding different isoforms have been found for this gene. [provided by RefSeq, Jul 2008],

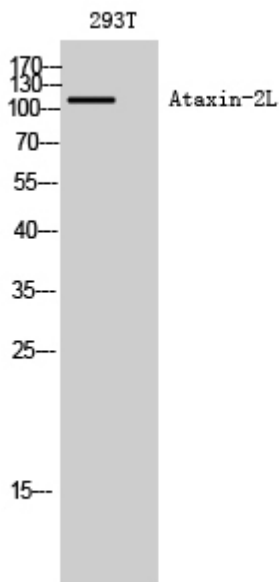
## matters needing attention

Avoid repeated freezing and thawing!

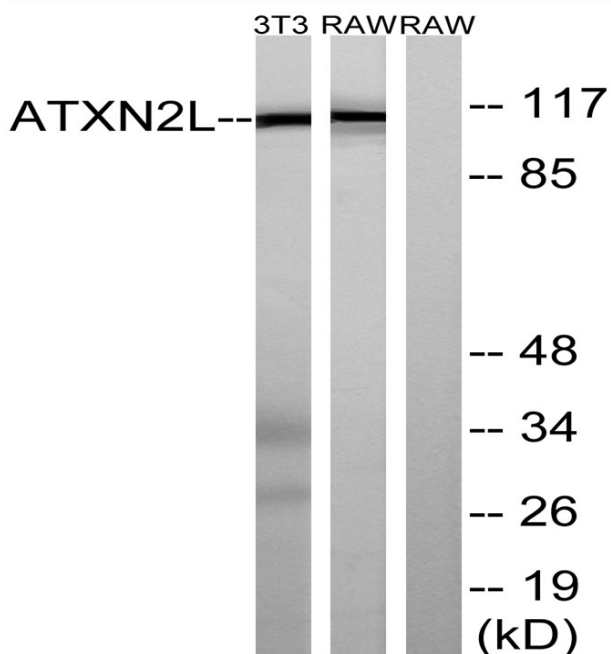
## Usage suggestions

This product can be used in immunological reaction related experiments. For more information, please consult technical personnel.

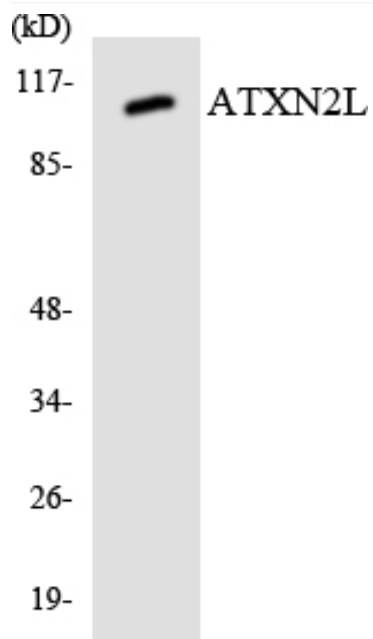
## Products Images



Western Blot analysis of 293T cells using Ataxin-2L Polyclonal Antibody diluted at 1:2000



Western blot analysis of lysates from NIH/3T3 and RAW264.7 cells, using ATXN2L Antibody. The lane on the right is blocked with the synthesized peptide.



Western blot analysis of the lysates from 293 cells using ATXN2L antibody.