



Arylsulfatase I Polyclonal Antibody

Catalog No	YP-Ab-03730
Isotype	IgG
Reactivity	Human;Monkey
Applications	WB;IHC;IF;ELISA
Gene Name	ARSI
Protein Name	Arylsulfatase I
Immunogen	The antiserum was produced against synthesized peptide derived from human ARSI. AA range:311-360
Specificity	Arylsulfatase I Polyclonal Antibody detects endogenous levels of Arylsulfatase I protein.
Formulation	Liquid in PBS containing 50% glycerol, 0.5% BSA and 0.02% sodium azide.
Source	Polyclonal, Rabbit,IgG
Purification	The antibody was affinity-purified from rabbit antiserum by affinity-chromatography using epitope-specific immunogen.
Dilution	Western Blot: 1/500 - 1/2000. Immunohistochemistry: 1/100 - 1/300. Immunofluorescence: 1/200 - 1/1000. ELISA: 1/40000. Not yet tested in other applications.
Concentration	1 mg/ml
Purity	≥90%
Storage Stability	-20°C/1 year
Synonyms	ARSI; Arylsulfatase I; ASI
Observed Band	64kD
Cell Pathway	Secreted . Endoplasmic reticulum . Localized in the intracellular granular structures.
Tissue Specificity	Expressed in placenta, in embryonic stem cells, fetal eyes and lens.
Function	cofactor: Binds 1 calcium ion per subunit.,PTM:The conversion to 3-oxoalanine (also known as C-formylglycine, FGly), of a serine or cysteine residue in prokaryotes and of a cysteine residue in eukaryotes, is critical for catalytic activity.,similarity:Belongs to the sulfatase family.,
Background	This gene encodes a protein that belongs to a large family of sulfatases that hydrolyze sulfate esters and sulfamates. Members of this family play a role in several cellular processes, including hormone synthesis, cell signaling in development and degradation of macromolecules. The protein encoded by this gene is thought to be secreted, and to function in extracellular space. [provided by RefSeq, Jul 2016],



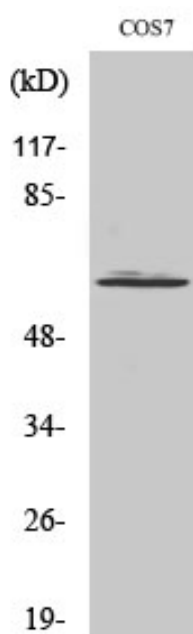
matters needing attention

Avoid repeated freezing and thawing!

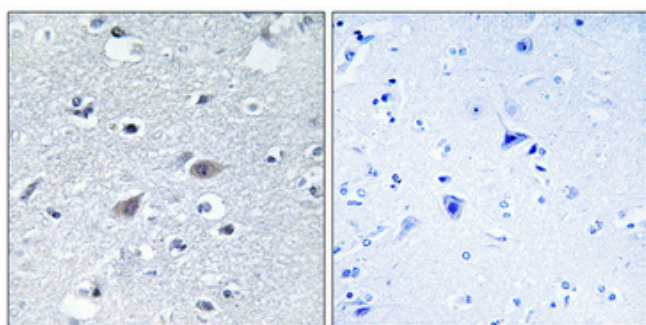
Usage suggestions

This product can be used in immunological reaction related experiments. For more information, please consult technical personnel.

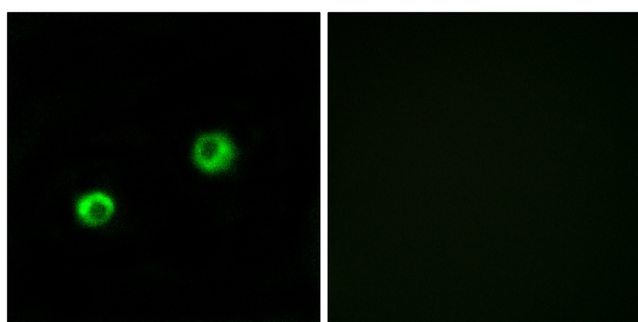
Products Images



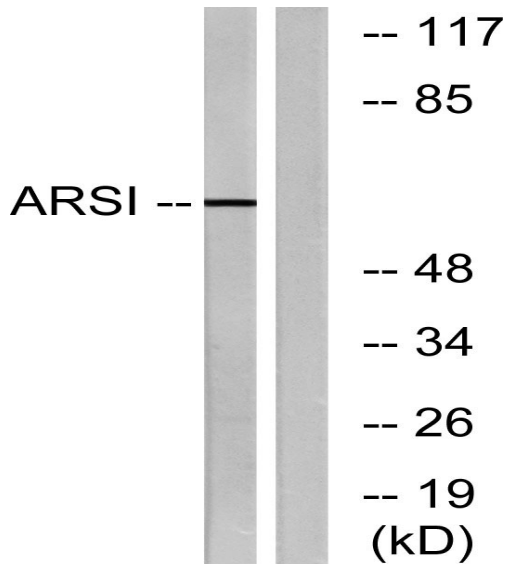
Western Blot analysis of various cells using Arylsulfatase I Polyclonal Antibody



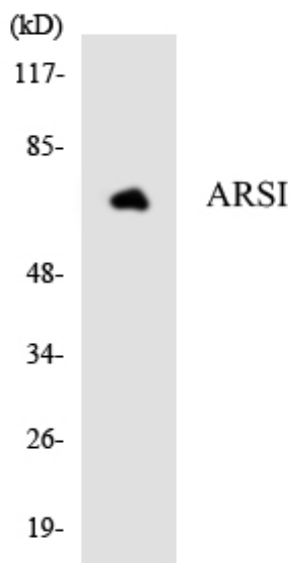
Immunohistochemical analysis of paraffin-embedded Human brain. Antibody was diluted at 1:100 (4° overnight). High-pressure and temperature Tris-EDTA, pH 8.0 was used for antigen retrieval. Negative control (right) obtained from antibody was pre-absorbed by immunogen peptide.



Immunofluorescence analysis of MCF7 cells, using ARSI Antibody. The picture on the right is blocked with the synthesized peptide.



Western blot analysis of lysates from COS7 cells, using ARSI Antibody. The lane on the right is blocked with the synthesized peptide.



Western blot analysis of the lysates from HepG2 cells using ARSI antibody.