



Arylsulfatase A Polyclonal Antibody

Catalog No	YP-Ab-03725
Isotype	IgG
Reactivity	Human;Mouse;Rat
Applications	WB;IHC;IF;ELISA
Gene Name	ARSA
Protein Name	Arylsulfatase A
Immunogen	The antiserum was produced against synthesized peptide derived from human ARSA. AA range:251-300
Specificity	Arylsulfatase A Polyclonal Antibody detects endogenous levels of Arylsulfatase A protein.
Formulation	Liquid in PBS containing 50% glycerol, 0.5% BSA and 0.02% sodium azide.
Source	Polyclonal, Rabbit,IgG
Purification	The antibody was affinity-purified from rabbit antiserum by affinity-chromatography using epitope-specific immunogen.
Dilution	WB: 1/500 - 1/2000. IHC: 1/100 - 1/300. ELISA: 1/20000.. IF 1:50-200
Concentration	1 mg/ml
Purity	≥90%
Storage Stability	-20°C/1 year
Synonyms	ARSA; Arylsulfatase A; ASA; Cerebroside-sulfatase
Observed Band	54kD
Cell Pathway	Endoplasmic reticulum . Lysosome .
Tissue Specificity	B-cell,Liver,Small intestine,Testis,
Function	catalytic activity:A cerebroside 3-sulfate + H(2)O = a cerebroside + sulfate.,cofactor:Binds 1 magnesium ion per subunit.,disease:Arylsulfatase A activity is defective in multiple sulfatase deficiency (MSD) [MIM:272200]. MSD is a disorder characterized by decreased activity of all known sulfatases. MSD is due to defects in SUMF1 resulting in the lack of post-translational modification of a highly conserved cysteine into 3-oxoalanine. It combines features of individual sulfatase deficiencies such as metachromatic leukodystrophy, mucopolysaccharidosis, chondrodysplasia punctata, hydrocephalus, ichthyosis, neurologic deterioration and developmental delay.,disease:Defects in ARSA are a cause of leukodystrophy metachromatic (MLD) [MIM:250100]. MLD is a disease due to a lysosomal storage defect. It is characterized by intralysosomal storage of cerebroside-3-sulfate in neural and non-neural tis
Background	The protein encoded by this gene hydrolyzes cerebroside sulfate to cerebroside and sulfate. Defects in this gene lead to metachromatic leucodystrophy (MLD), a



progressive demyelination disease which results in a variety of neurological symptoms and ultimately death. Alternatively spliced transcript variants have been described for this gene. [provided by RefSeq, Dec 2010],

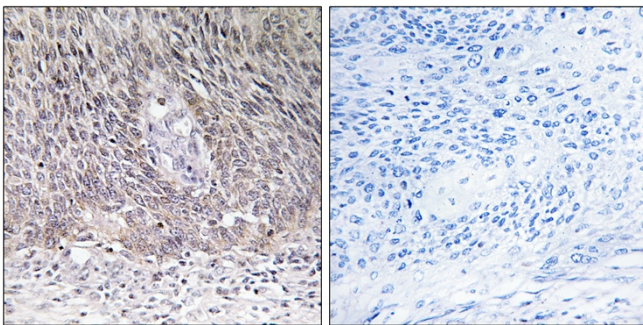
matters needing attention

Avoid repeated freezing and thawing!

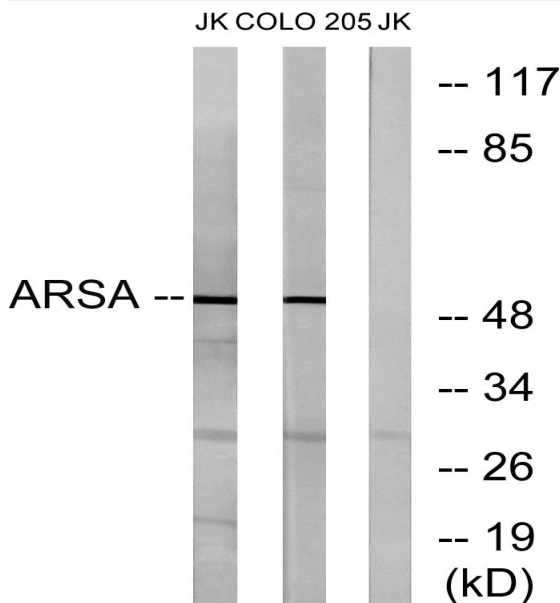
Usage suggestions

This product can be used in immunological reaction related experiments. For more information, please consult technical personnel.

Products Images



Immunohistochemistry analysis of paraffin-embedded human cervix carcinoma tissue, using ARSA Antibody. The picture on the right is blocked with the synthesized peptide.



Western blot analysis of lysates from Jurkat and COLO cells, using ARSA Antibody. The lane on the right is blocked with the synthesized peptide.