



# Arrestin-C Polyclonal Antibody

<b>Catalog No</b>	YP-Ab-03722
<b>Isotype</b>	IgG
<b>Reactivity</b>	Human;Rat;Mouse;
<b>Applications</b>	WB;IHC;IF;ELISA
<b>Gene Name</b>	ARR3
<b>Protein Name</b>	Arrestin-C
<b>Immunogen</b>	The antiserum was produced against synthesized peptide derived from human ARRC. AA range:339-388
<b>Specificity</b>	Arrestin-C Polyclonal Antibody detects endogenous levels of Arrestin-C protein.
<b>Formulation</b>	Liquid in PBS containing 50% glycerol, 0.5% BSA and 0.02% sodium azide.
<b>Source</b>	Polyclonal, Rabbit,IgG
<b>Purification</b>	The antibody was affinity-purified from rabbit antiserum by affinity-chromatography using epitope-specific immunogen.
<b>Dilution</b>	Western Blot: 1/500 - 1/2000. Immunohistochemistry: 1/100 - 1/300. Immunofluorescence: 1/200 - 1/1000. ELISA: 1/5000. Not yet tested in other applications.
<b>Concentration</b>	1 mg/ml
<b>Purity</b>	≥90%
<b>Storage Stability</b>	-20°C/1 year
<b>Synonyms</b>	ARR3; ARRX; CAR; Arrestin-C; Cone arrestin; C-arrestin; cArr; Retinal cone arrestin-3; X-arrestin
<b>Observed Band</b>	40kD
<b>Cell Pathway</b>	Photoreceptor inner segment . Cell projection, cilium, photoreceptor outer segment .
<b>Tissue Specificity</b>	Inner and outer segments, and the inner plexiform regions of the retina.
<b>Function</b>	function:May play a role in an as yet undefined retina-specific signal transduction. Could binds to photoactivated-phosphorylated red/green opsins.,similarity:Belongs to the arrestin family.,tissue specificity:Inner and outer segments, and the inner plexiform regions of the retina.,
<b>Background</b>	The protein encoded by this gene is a non-visual arrestin which binds to agonist-activated, phosphorylated G protein-coupled receptors. This binding uncouples the receptor from the heterotrimeric G protein, resulting in termination of the G protein-coupled receptor signaling. The encoded protein also is a part of the centrosome, interacting with gamma-tubulin to help regulate proper centrosome function. [provided by RefSeq, May 2016],



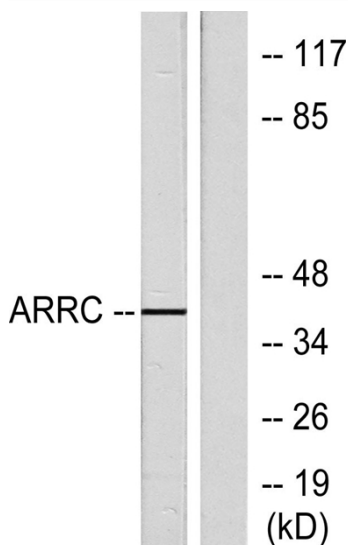
**matters needing attention**

Avoid repeated freezing and thawing!

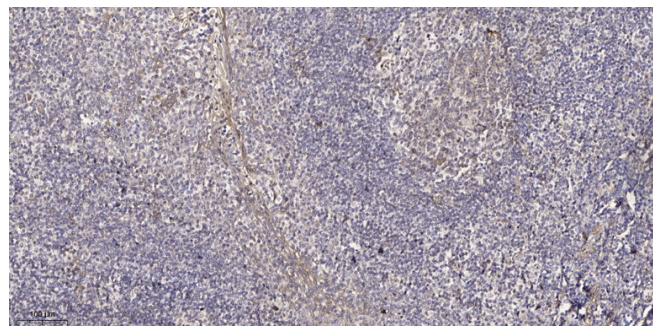
**Usage suggestions**

This product can be used in immunological reaction related experiments. For more information, please consult technical personnel.

**Products Images**



Western blot analysis of lysates from LOVO cells, using ARRC Antibody. The lane on the right is blocked with the synthesized peptide.



Immunohistochemical analysis of paraffin-embedded human tonsil. 1, Antibody was diluted at 1:200(4° overnight). 2, Tris-EDTA,pH9.0 was used for antigen retrieval. 3, Secondary antibody was diluted at 1:200(room temperature, 30min).