

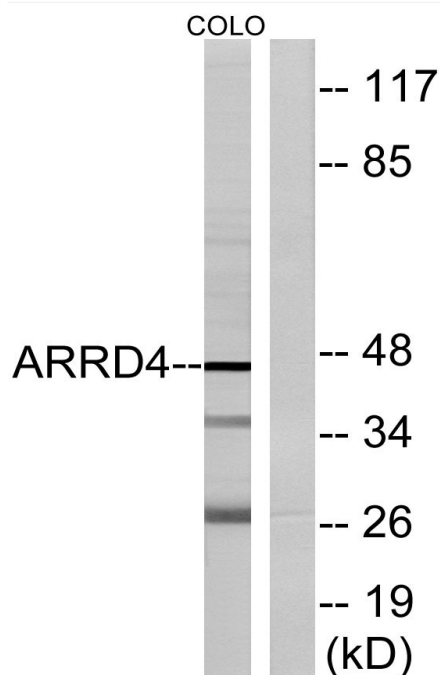


Arrdc4 Polyclonal Antibody

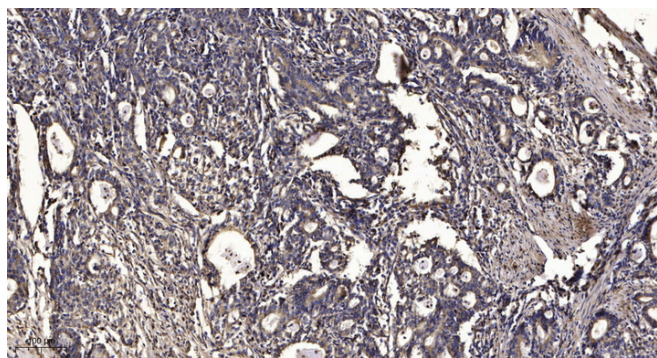
Catalog No	YP-Ab-03721
Isotype	IgG
Reactivity	Human;Rat;Mouse;
Applications	WB;IHC;IF;ELISA
Gene Name	ARRDC4
Protein Name	Arrestin domain-containing protein 4
Immunogen	The antiserum was produced against synthesized peptide derived from human ARRD4. AA range:127-176
Specificity	Arrdc4 Polyclonal Antibody detects endogenous levels of Arrdc4 protein.
Formulation	Liquid in PBS containing 50% glycerol, 0.5% BSA and 0.02% sodium azide.
Source	Polyclonal, Rabbit,IgG
Purification	The antibody was affinity-purified from rabbit antiserum by affinity-chromatography using epitope-specific immunogen.
Dilution	WB: 1/500 - 1/2000. IHC: 1/100 - 1/300. ELISA: 1/20000.. IF 1:50-200
Concentration	1 mg/ml
Purity	≥90%
Storage Stability	-20°C/1 year
Synonyms	ARRDC4; Arrestin domain-containing protein 4
Observed Band	45kD
Cell Pathway	Early endosome . Cell membrane ; Peripheral membrane protein ; Cytoplasmic side . Cytoplasmic vesicle . Also found in extracellular vesicles different from exosomes. .
Tissue Specificity	Placenta,Testis,Thalamus,
Function	similarity:Belongs to the arrestin family.,
Background	similarity:Belongs to the arrestin family.,
matters needing attention	Avoid repeated freezing and thawing!
Usage suggestions	This product can be used in immunological reaction related experiments. For more information, please consult technical personnel.



Products Images



Western blot analysis of lysates from COLO cells, using ARR4 Antibody. The lane on the right is blocked with the synthesized peptide.



Immunohistochemical analysis of paraffin-embedded human Gastric adenocarcinoma. 1, Antibody was diluted at 1:200(4° overnight). 2, Tris-EDTA,pH9.0 was used for antigen retrieval. 3,Secondary antibody was diluted at 1:200(room temperature, 45min).