



ARMCX2 Polyclonal Antibody

Catalog No	YP-Ab-03715
Isotype	IgG
Reactivity	Human;Mouse;Rat
Applications	WB;IHC;IF;ELISA
Gene Name	ARMCX2
Protein Name	Armadillo repeat-containing X-linked protein 2
Immunogen	The antiserum was produced against synthesized peptide derived from human ARM CX2. AA range:321-370
Specificity	ARM CX2 Polyclonal Antibody detects endogenous levels of ARM CX2 protein.
Formulation	Liquid in PBS containing 50% glycerol, 0.5% BSA and 0.02% sodium azide.
Source	Polyclonal, Rabbit,IgG
Purification	The antibody was affinity-purified from rabbit antiserum by affinity-chromatography using epitope-specific immunogen.
Dilution	Western Blot: 1/500 - 1/2000. Immunohistochemistry: 1/100 - 1/300. Immunofluorescence: 1/200 - 1/1000. ELISA: 1/20000. Not yet tested in other applications.
Concentration	1 mg/ml
Purity	≥90%
Storage Stability	-20°C/1 year
Synonyms	ARM CX2; ALEX2; KIAA0512; Armadillo repeat-containing X-linked protein 2; ARM protein lost in epithelial cancers on chromosome X 2; Protein ALEX2
Observed Band	65kD
Cell Pathway	Mitochondrion . Mitochondrion outer membrane ; Single-pass membrane protein .
Tissue Specificity	Expressed at high levels ovary, heart, testis, prostate, brain, spleen and colon. Expressed at very low levels in liver and thymus. Not expressed in peripheral blood leukocytes. Not expressed in pancreas and ovarian carcinomas.
Function	similarity:Contains 3 ARM repeats.,tissue specificity:Expressed at high levels ovary, heart, testis, prostate, brain, spleen and colon. Expressed at very low levels in liver and thymus. Not expressed in peripheral blood leukocytes. Not expressed in pancreas and ovarian carcinomas.,
Background	armadillo repeat containing, X-linked 2(ARM CX2) Homo sapiens This gene encodes a protein containing a potential N-terminal transmembrane domain and multiple armadillo (arm) repeats. Proteins containing arm repeats are involved in development, maintenance of tissue integrity, and tumorigenesis. This gene is located in a cluster of related genes on chromosome X. There is a pseudogene for this gene on chromosome 7. Alternative splicing in the 5' UTR results in multiple transcript variants encoding the same protein. [provided by RefSeq, Aug



2013],

matters needing attention

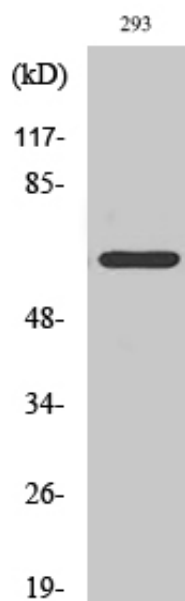
Avoid repeated freezing and thawing!

Usage suggestions

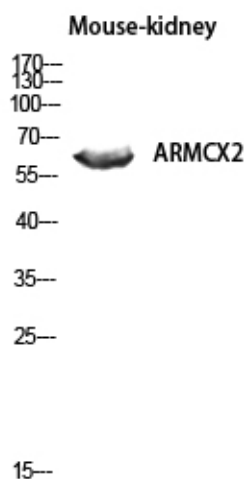
This product can be used in immunological reaction related experiments. For more information, please consult technical personnel.



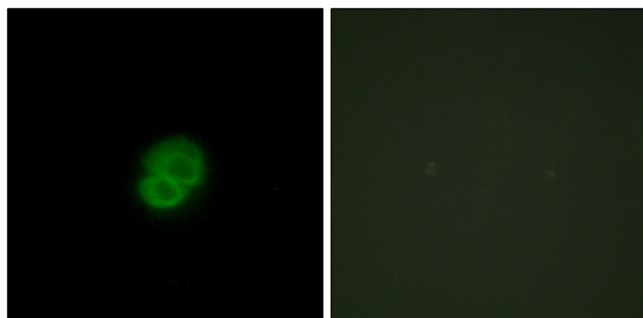
Products Images



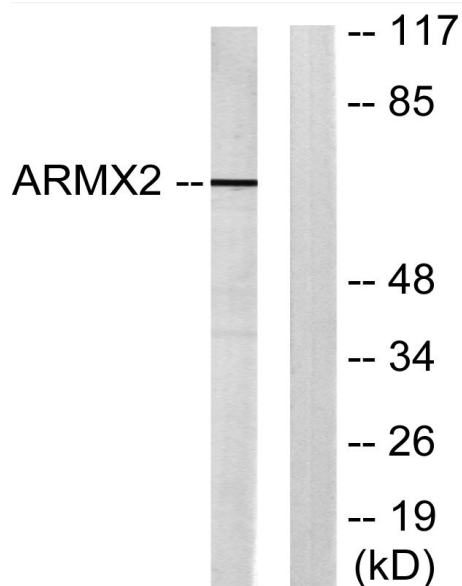
Western Blot analysis of various cells using ARM CX2 Polyclonal Antibody diluted at 1:1000



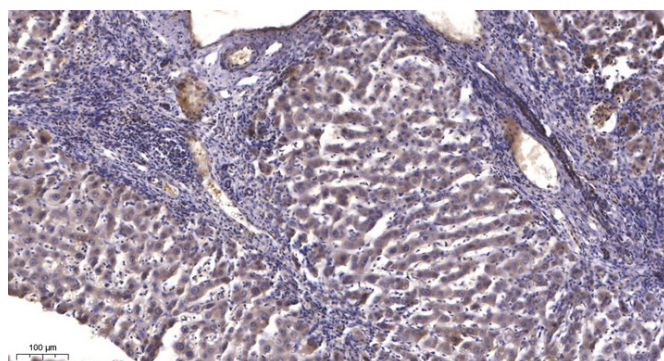
Western blot analysis of Mouse-kidney lysis using ARM CX2 antibody. Antibody was diluted at 1:1000



Immunofluorescence analysis of HepG2 cells, using ARM CX2 Antibody. The picture on the right is blocked with the synthesized peptide.



Western blot analysis of lysates from 293 cells, using ARMX2 Antibody. The lane on the right is blocked with the synthesized peptide.



Immunohistochemical analysis of paraffin-embedded human liver cancer. 1, Antibody was diluted at 1:200(4° overnight). 2, Tris-EDTA,pH9.0 was used for antigen retrieval. 3,Secondary antibody was diluted at 1:200(room temperature, 45min).