



AKAP 110 Polyclonal Antibody

Catalog No	YP-Ab-03688
Isotype	IgG
Reactivity	Human;Mouse
Applications	IF;ELISA
Gene Name	AKAP3
Protein Name	A-kinase anchor protein 3
Immunogen	The antiserum was produced against synthesized peptide derived from human AKAP3. AA range:191-240
Specificity	AKAP 110 Polyclonal Antibody detects endogenous levels of AKAP 110 protein.
Formulation	Liquid in PBS containing 50% glycerol, 0.5% BSA and 0.02% sodium azide.
Source	Polyclonal, Rabbit,IgG
Purification	The antibody was affinity-purified from rabbit antiserum by affinity-chromatography using epitope-specific immunogen.
Dilution	Immunofluorescence: 1/200 - 1/1000. ELISA: 1/10000. Not yet tested in other applications.
Concentration	1 mg/ml
Purity	≥90%
Storage Stability	-20°C/1 year
Synonyms	AKAP3; AKAP110; SOB1; A-kinase anchor protein 3; AKAP-3; A-kinase anchor protein 110 kDa; AKAP 110; Cancer/testis antigen 82; CT82; Fibrous sheath protein of 95 kDa; FSP95; Fibrousheathin I; Fibrousheathin-1; Protein kinase A-anchoring prot
Observed Band	
Cell Pathway	Cytoplasmic vesicle, secretory vesicle, acrosome . Ribs of the fibrous sheath in the principal piece of the sperm tail. Dorsal margin of the acrosomal segment.
Tissue Specificity	Testis specific; only expressed in spermatids.
Function	domain:RII-binding site, predicted to form an amphipathic helix, could participate in protein-protein interactions with a complementary surface on the R-subunit dimer.,function:May function as a regulator of both motility- and head-associated functions such as capacitation and the acrosome reaction.,PTM:Phosphorylated on tyrosine residues.,similarity:Belongs to the AKAP110 family.,subcellular location:Ribs of the fibrous sheath in the principal piece of the sperm tail. Dorsal margin of the acrosomal segment.,subunit:Interacts with ROPN1 AND ROPN1L.,tissue specificity:Testis specific; only expressed in spermatids.,
Background	This gene encodes a member of A-kinase anchoring proteins (AKAPs), a family of functionally related proteins that target protein kinase A to discrete locations



within the cell. The encoded protein is reported to participate in protein-protein interactions with the R-subunit of the protein kinase A as well as sperm-associated proteins. This protein is expressed in spermatozoa and localized to the acrosomal region of the sperm head as well as the length of the principal piece. It may function as a regulator of motility, capacitation, and the acrosome reaction. [provided by RefSeq, May 2013],

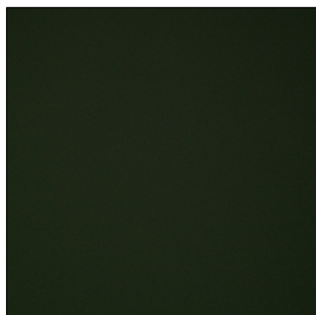
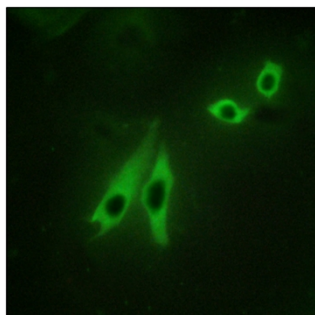
matters needing attention

Avoid repeated freezing and thawing!

Usage suggestions

This product can be used in immunological reaction related experiments. For more information, please consult technical personnel.

Products Images



Immunofluorescence analysis of NIH/3T3 cells, using AKAP3 Antibody. The picture on the right is blocked with the synthesized peptide.