



AIM2 Polyclonal Antibody

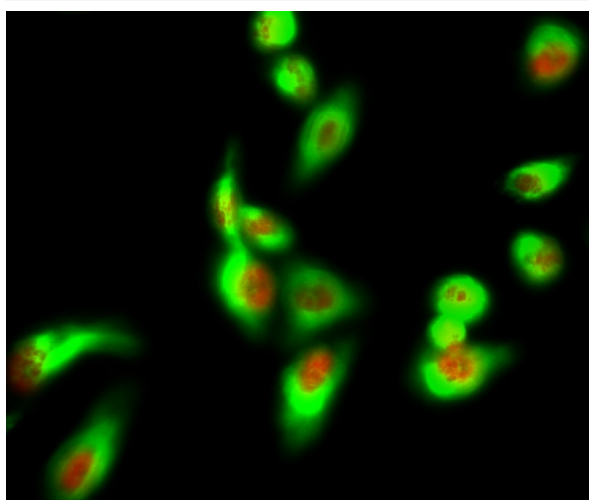
Catalog No	YP-Ab-03685
Isotype	IgG
Reactivity	Human; Mouse; Rat
Applications	WB; IHC; IF; ELISA
Gene Name	AIM2
Protein Name	Interferon-inducible protein AIM2
Immunogen	The antiserum was produced against synthesized peptide derived from human AIM2. AA range: 51-100
Specificity	AIM2 Polyclonal Antibody detects endogenous levels of AIM2 protein.
Formulation	Liquid in PBS containing 50% glycerol, 0.5% BSA and 0.02% sodium azide.
Source	Polyclonal, Rabbit, IgG
Purification	The antibody was affinity-purified from rabbit antiserum by affinity-chromatography using epitope-specific immunogen.
Dilution	Western Blot: 1/500 - 1/2000. Immunohistochemistry: 1/100 - 1/300. Immunofluorescence: 1/200 - 1/1000. ELISA: 1/40000. Not yet tested in other applications.
Concentration	1 mg/ml
Purity	≥90%
Storage Stability	-20°C/1 year
Synonyms	AIM2; Interferon-inducible protein AIM2; Absent in melanoma 2
Observed Band	39kD
Cell Pathway	Nucleus. Cytoplasm. Activated inflammasomes can aggregate in the cytosol as speck-like particles.
Tissue Specificity	Expressed in spleen, small intestine, peripheral blood leukocytes, and testis.
Function	disease: Defects in AIM2 may be a cause of microsatellite unstable colon cancers.; function: Tumor suppressor which may act by repressing NF-kappa-B transcriptional activity.; induction: By interferon gamma.; similarity: Belongs to the HIN-200 family.; similarity: Contains 1 DAPIN domain.; similarity: Contains 1 HIN-200 domain.; subunit: Homodimer.; tissue specificity: Expressed in spleen, small intestine, peripheral blood leukocytes, and testis.;
Background	AIM2 is a member of the IFI202X /IFI16 family. It plays a putative role in tumorigenic reversion and may control cell proliferation. Interferon-gamma induces expression of AIM2. [provided by RefSeq, Jul 2008],
matters needing attention	Avoid repeated freezing and thawing!



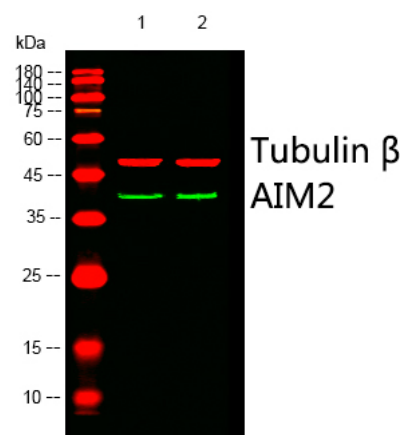
Usage suggestions

This product can be used in immunological reaction related experiments. For more information, please consult technical personnel.

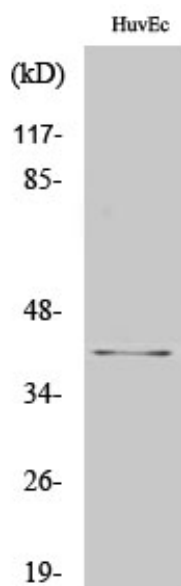
Products Images



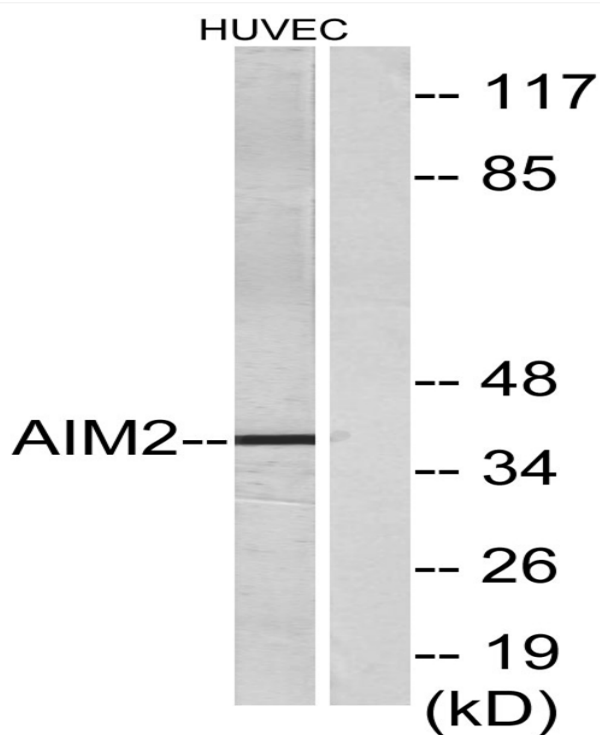
Immunofluorescence analysis of Hela cell. 1, AIM2 Polyclonal Antibody (red) was diluted at 1:200 (4° overnight). HSP70 Monoclonal Antibody (3G10) (green) was diluted at 1:200 (4° overnight). 2, Goat Anti Rabbit Alexa Fluor 594 Catalog: RS3611 was diluted at 1:1000 (room temperature, 50min). Goat Anti Mouse Alexa Fluor 488 Catalog: RS3208 was diluted at 1:1000 (room temperature, 50min).



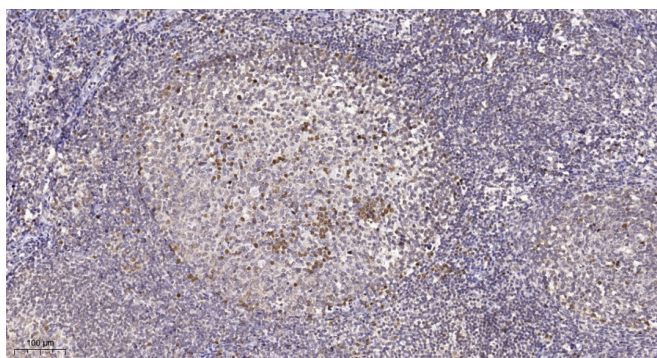
Western blot analysis of lysates from 1) HuvEc, 2) Jurkat cells. (Green) primary antibody was diluted at 1:1000, 4° overnight. Dylight 800 secondary antibody (Immunoway: RS23920) was diluted at 1:10000, 37° 1hour. (Red) Tubulin β Monoclonal Antibody (5G3) (Immunoway: YM3030) antibody was diluted at 1:5000 as loading control, 4° overnight. Dylight 680 secondary antibody (Immunoway: RS23710) was diluted at 1:10000, 37° 1hour.



Western Blot analysis of HuvEc cells using AIM2 Polyclonal Antibody cells nucleus extracted by Minute TM Cytoplasmic and Nuclear Fractionation kit (SC-003, Invent biotech, MN, USA).



Western blot analysis of lysates from HUVEC cells, using AIM2 Antibody. The lane on the right is blocked with the synthesized peptide.



Immunohistochemical analysis of paraffin-embedded human tonsil. 1, Tris-EDTA, pH 9.0 was used for antigen retrieval. 2 Antibody was diluted at 1:200 (4° overnight). 3, Secondary antibody was diluted at 1:200 (room temperature, 45 min).