



# Adducin $\beta$ Polyclonal Antibody

<b>Catalog No</b>	YP-Ab-03681
<b>Isotype</b>	IgG
<b>Reactivity</b>	Human;Mouse;Rat
<b>Applications</b>	WB;IF;ELISA
<b>Gene Name</b>	ADD2
<b>Protein Name</b>	Beta-adducin
<b>Immunogen</b>	The antiserum was produced against synthesized peptide derived from human ADD2. AA range:471-520
<b>Specificity</b>	Adducin $\beta$ Polyclonal Antibody detects endogenous levels of Adducin $\beta$ protein.
<b>Formulation</b>	Liquid in PBS containing 50% glycerol, 0.5% BSA and 0.02% sodium azide.
<b>Source</b>	Polyclonal, Rabbit,IgG
<b>Purification</b>	The antibody was affinity-purified from rabbit antiserum by affinity-chromatography using epitope-specific immunogen.
<b>Dilution</b>	Western Blot: 1/500 - 1/2000. Immunofluorescence: 1/200 - 1/1000. ELISA: 1/5000. Not yet tested in other applications.
<b>Concentration</b>	1 mg/ml
<b>Purity</b>	$\geq 90\%$
<b>Storage Stability</b>	-20°C/1 year
<b>Synonyms</b>	ADD2; ADDB; Beta-adducin; Erythrocyte adducin subunit beta
<b>Observed Band</b>	81kD
<b>Cell Pathway</b>	Cytoplasm, cytoskeleton. Cell membrane; Peripheral membrane protein; Cytoplasmic side.
<b>Tissue Specificity</b>	Expressed mainly in brain, spleen, kidney cortex and medulla, and heart. Also expressed in human umbilical vein endothelial cells, human vascular smooth muscle cells, kidney tubular cells and K-562 cell line.
<b>Function</b>	alternative products:Additional isoforms seem to exist,developmental stage:Fetal kidney expresses isoforms 3, 4, 5, 6 and 7, and fetal liver expresses isoforms 3 and 4.,domain:Each subunit is comprised of three regions: a NH2-terminal protease-resistant globular head region, a short connecting subdomain, and a protease-sensitive tail region.,function:Membrane-cytoskeleton-associated protein that promotes the assembly of the spectrin-actin network. Binds to calmodulin. Calmodulin binds preferentially to the beta subunit.,PTM:The N-terminus is blocked.,similarity:Belongs to the aldolase class II family. Adducin subfamily.,subunit:Heterodimer of an alpha and a beta subunit.,tissue specificity:Expressed mainly in brain, spleen, kidney cortex and medulla, and heart. Also expressed in human umbilical vein endothelial cells, human vascular smooth muscle cells, kidney tubular cells and K562 cell

**Background**

adducin 2(ADD2) Homo sapiens      Adducins are heteromeric proteins composed of different subunits referred to as adducin alpha, beta and gamma. The three subunits are encoded by distinct genes and belong to a family of membrane skeletal proteins involved in the assembly of spectrin-actin network in erythrocytes and at sites of cell-cell contact in epithelial tissues. While adducins alpha and gamma are ubiquitously expressed, the expression of adducin beta is restricted to brain and hematopoietic tissues. Adducin, originally purified from human erythrocytes, was found to be a heterodimer of adducins alpha and beta. Polymorphisms resulting in amino acid substitutions in these two subunits have been associated with the regulation of blood pressure in an animal model of hypertension. Heterodimers consisting of alpha and gamma subunits have also been described. Structurally, each subunit is comprised of two distinct domains. The amino-terminal region i

**matters needing attention**

Avoid repeated freezing and thawing!

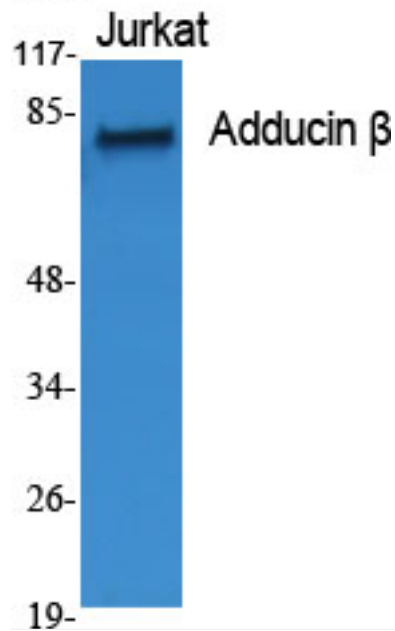
**Usage suggestions**

This product can be used in immunological reaction related experiments. For more information, please consult technical personnel.

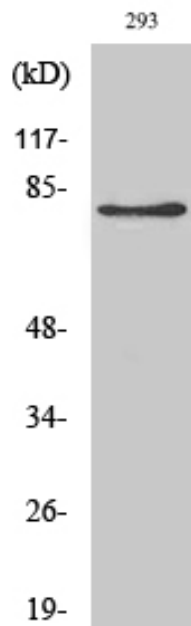


## Products Images

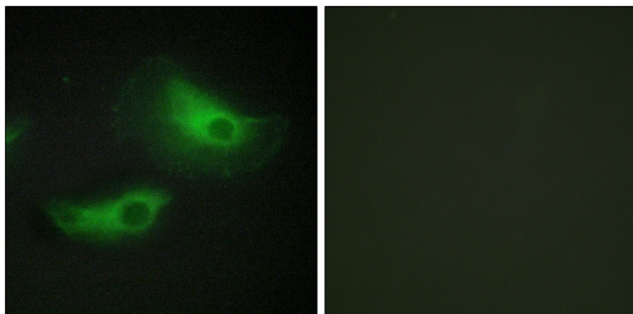
(kD)



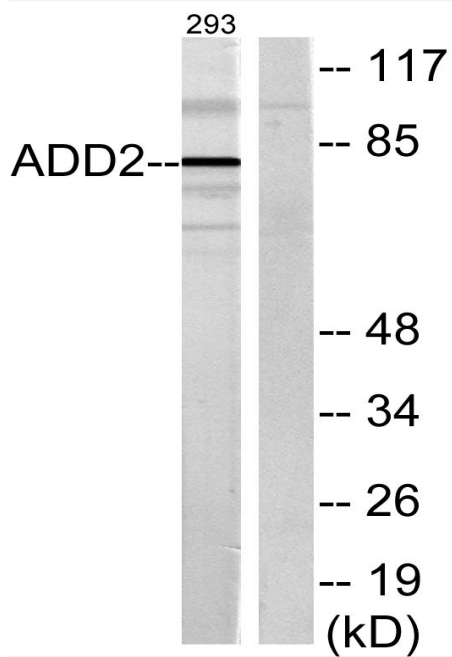
Western Blot analysis of various cells using Adducin β Polyclonal Antibody



Western Blot analysis of 293 cells using Adducin β Polyclonal Antibody



Immunofluorescence analysis of HeLa cells, using ADD2 Antibody. The picture on the right is blocked with the synthesized peptide.



Western blot analysis of lysates from 293 cells, using ADD2 Antibody. The lane on the right is blocked with the synthesized peptide.