



A Cyclase VII Polyclonal Antibody

Catalog No	YP-Ab-03676
Isotype	IgG
Reactivity	Human;Mouse
Applications	IHC;IF;ELISA
Gene Name	ADCY7
Protein Name	Adenylate cyclase type 7
Immunogen	The antiserum was produced against synthesized peptide derived from human ADCY7. AA range:191-240
Specificity	A Cyclase VII Polyclonal Antibody detects endogenous levels of A Cyclase VII protein.
Formulation	Liquid in PBS containing 50% glycerol, 0.5% BSA and 0.02% sodium azide.
Source	Polyclonal, Rabbit,IgG
Purification	The antibody was affinity-purified from rabbit antiserum by affinity-chromatography using epitope-specific immunogen.
Dilution	Immunohistochemistry: 1/100 - 1/300. Immunofluorescence: 1/200 - 1/1000. ELISA: 1/5000. Not yet tested in other applications.
Concentration	1 mg/ml
Purity	≥90%
Storage Stability	-20°C/1 year
Synonyms	ADCY7; KIAA0037; Adenylate cyclase type 7; ATP pyrophosphate-lyase 7; Adenylate cyclase type VII; Adenyl cyclase 7
Observed Band	
Cell Pathway	Membrane; Multi-pass membrane protein.
Tissue Specificity	Blood,Bone marrow,
Function	catalytic activity:ATP = 3',5'-cyclic AMP + diphosphate.,cofactor:Binds 2 magnesium ions per subunit.,function:This is a membrane-bound, calcium-inhibitable adenyl cyclase.,similarity:Belongs to the adenyl cyclase class-4/guanylyl cyclase family.,similarity:Contains 2 guanylate cyclase domains.,
Background	This gene encodes a membrane-bound adenylate cyclase that catalyses the formation of cyclic AMP from ATP and is inhibitable by calcium. The product of this gene is a member of the adenyl cyclase class-4/guanylyl cyclase enzyme family that is characterized by the presence of twelve membrane-spanning domains in its sequences. Several transcript variants have been observed for this gene, but the full-length natures of only two have been determined so far. [provided by RefSeq, Oct 2013],

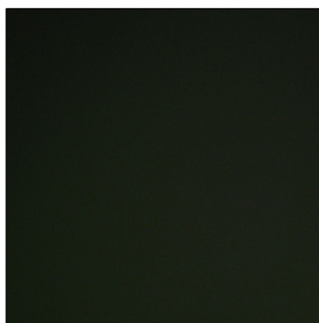
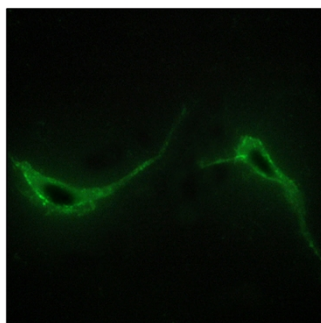
**matters needing attention**

Avoid repeated freezing and thawing!

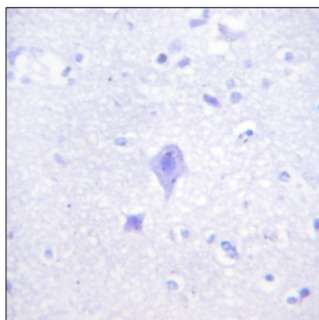
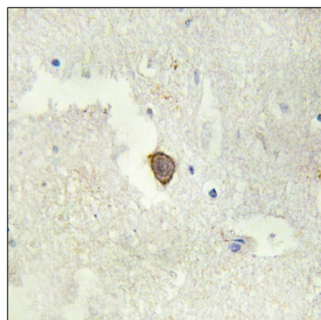
Usage suggestions

This product can be used in immunological reaction related experiments. For more information, please consult technical personnel.

Products Images



Immunofluorescence analysis of NIH/3T3 cells, using ADCY7 Antibody. The picture on the right is blocked with the synthesized peptide.



Immunohistochemistry analysis of paraffin-embedded human brain tissue, using ADCY7 Antibody. The picture on the right is blocked with the synthesized peptide.